

REVISIONS			
REV.	DESCRIPTION	DATE	APPROVED
A	INITIAL RELEASE	03/04/24	J. Q

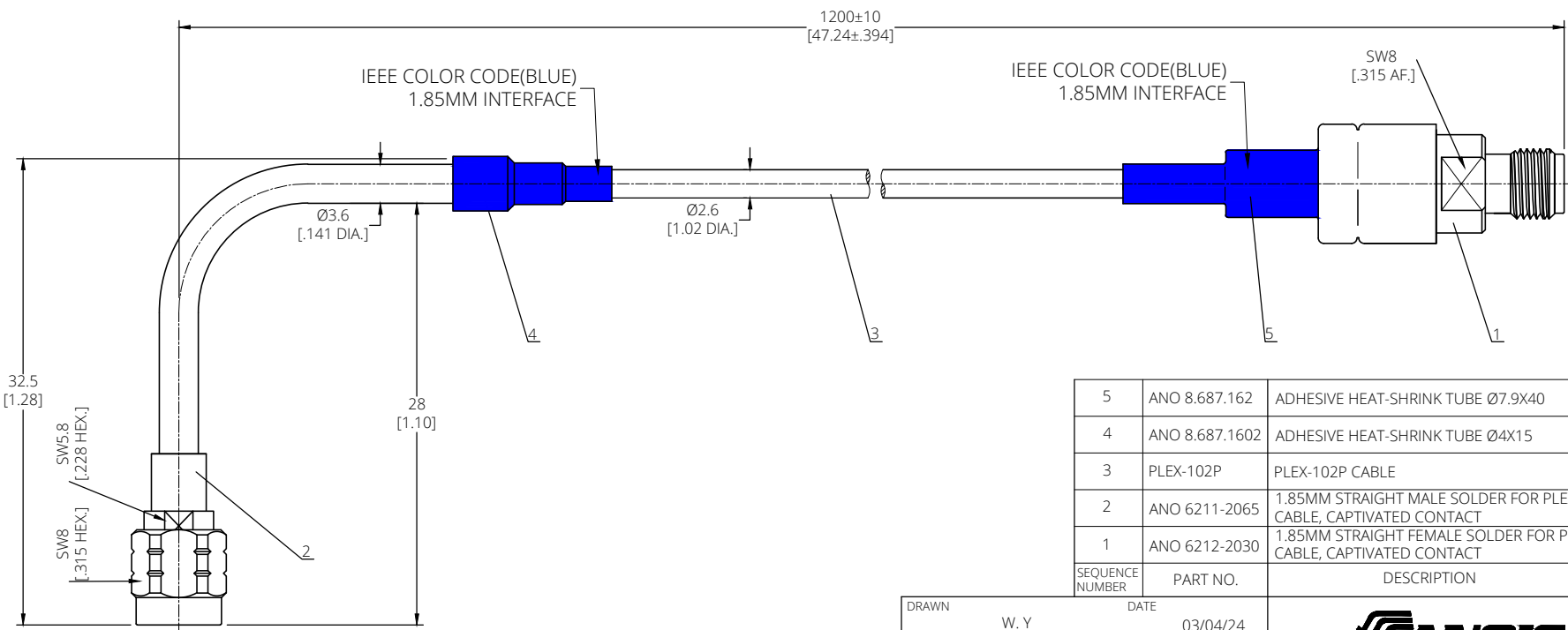
**MATERIAL & FINISH:**  
**1.85MM CONNECTOR:**  
 1 BODY: BRASS, STAINLESS STEEL, PASSIVATED  
 2 CENTER CONTACT: BERYLLIUM COPPER ALLOY, GOLD PLATED  
 3 COUPLING NUT: STAINLESS STEEL, PASSIVATED  
 4 INSULATOR: PEI  
 5 SOLDER FERRULE: BRASS, GOLD PLATED

**ELECTRICAL DATA:**  
 1 IMPEDANCE: 50 Ω  
 2 FREQUENCY RANGE: DC~67 GHz  
 3 VSWR: 1.45 MAX.  
 4 INSERTION LOSS: 8.30 dB MAX.  
 5 PHASE STABILITY: ±8° TYP./ ± 15.6° MAX.  
 6 AMPLITUDE STABILITY: ±0.08 DB TYP./ ± 0.15 DB MAX.

**PLEX102P CABLE:**  
 1 INNER CONDUCTOR: SILVER PLATED COPPER  
 2 DIELECTRIC: LD PTFE  
 3 OUTER CONDUCTOR: SPIRAL WRAPPED SILVER PLATED COPPER TAPE  
 4 INTERLAYER: PTFE  
 5 OUTER SHIELDS: SILVER PLATED COPPER BRAID  
 6 JACKET: FEP

**ENVIRONMENTAL DATA:**  
 1 TEMPERATURE RANGE: -55°C~+125°C  
 2 2011/65/EU(RoHS) AND 2015/863/(RoHS): COMPLIANT  
 3 1999/45/EC(REACH): COMPLIANT

**MECHANICAL DATA:**  
 1 MINIMUM STATIC BEND RADIUS: 11 MM  
 2 CRUSH RESISTANCE: >6 Kgf/cm  
 3 RECOMMENDED TORQUE: 1.85MM MALE 0.9 NM.



SEQUENCE NUMBER	PART NO.	DESCRIPTION	QTY
5	ANO 8.687.162	ADHESIVE HEAT-SHRINK TUBE Ø7.9X40	1
4	ANO 8.687.1602	ADHESIVE HEAT-SHRINK TUBE Ø4X15	1
3	PLEX-102P	PLEX-102P CABLE	1
2	ANO 6211-2065	1.85MM STRAIGHT MALE SOLDER FOR PLEX102P CABLE, CAPTIVATED CONTACT	1
1	ANO 6212-2030	1.85MM STRAIGHT FEMALE SOLDER FOR PLEX102P CABLE, CAPTIVATED CONTACT	1

DRAWN	W. Y	DATE	03/04/24
CHECKED	X. Y	DATE	03/04/24
APPROVED	J. Q	DATE	03/04/24
UNLESS OTHERWISE SPECIFIED DIMENSIONS ARE IN MILLIMETERS, DIMENSIONS IN [ ] ARE IN INCHES FOR CUSTOMER REFERENCE ONLY UNLESS OTHERWISE SPECIFIED TOLERANCE ARE:		THESE DRAWINGS AND SPECIFICATIONS ARE THE PROPERTY OF ANOISON ELECTRONICS LTD AND SHOULD NOT BE USED WITHOUT WRITTEN PERMISSION COPYRIGHT © 2024 ANOISON ELECTRONICS LTD	
XX	±0.13 [005"]		
X	±0.20 [008"]		
X	±0.50 [019"]		
X°	±1°		
X"	±2°		

**ANOISON**

TITLE  
 WAFER PROBING CABLE, 1.85MM FEMALE TO 1.85MM MALE (90 DEGREE BENDED), PLEX102P CABLE, 1.2 METERS

VIEW

PART NO.  
 WP-18(90°)M-18F-1.2M

SIZE	SCALE	SHEET	REV.
A3	2.5:1	1/1	A