

MATERIAL & FINISH:

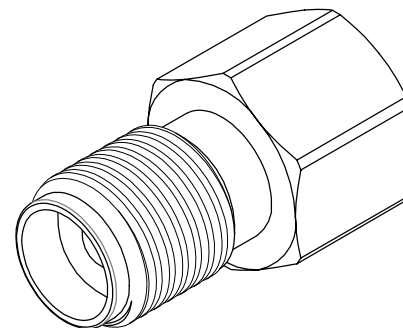
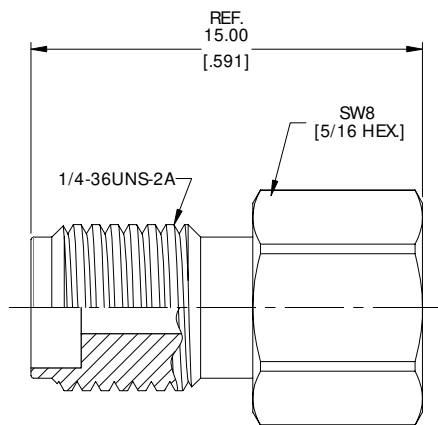
STAINLESS STEEL, PASSIVATED

ENVIRONMENTAL DATA:

- 1 2011/65/EU (RoHS) AND 2015/863/(RoHS): COMPLIANT
- 2 1907/2006/EC (REACH): COMPLIANT
- 3 RECOMMENDED TORQUE: 18 IN.LBS

REVISIONS

REV.	DESCRIPTION	DATE	APPROVED
A	INITIAL RELEASE	03/06/26	J Q



DRAWN	X. Y	DATE	03/06/26
CHECKED	W. Y	DATE	03/06/26
APPROVED	J Q	DATE	03/06/26

UNLESS OTHERWISE SPECIFIED DIMENSIONS ARE IN MILLIMETERS. DIMENSIONS IN [] ARE IN INCHES FOR CUSTOMER REFERENCE ONLY UNLESS OTHERWISE SPECIFIED TOLERANCE ARE:

.XX	±0.13 [.005"]
.X	±0.20 [.008"]
X	±0.50 [.019"]
.X°	±1°
X°	±2°

THESE DRAWINGS AND SPECIFICATIONS ARE THE PROPERTY OF ANOISON ELECTRONICS LTD AND SHOULD NOT BE USED WITHOUT WRITTEN PERMISSION COPYRIGHT © 2026 ANOISON ELECTRONICS LTD



TITLE
SMA/3.5MM/2.92MM MALE THREAD-IN CONNECTOR INSTALLATION TOOL

VIEW



PART NO.

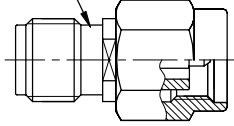
T29003

SIZE	SCALE	SHEET	REV.
A3	5:1	1/1	A

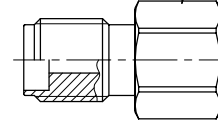
P/N: T29003

Description: SMA/3.5MM/2.92MM male thread-in connector installation tool

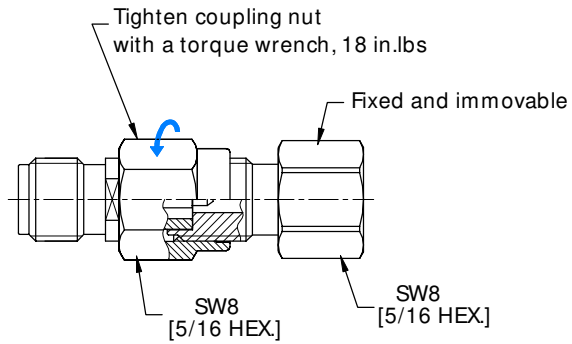
SMA/3.5MM/2.92MM male
thread-in connector



T29003

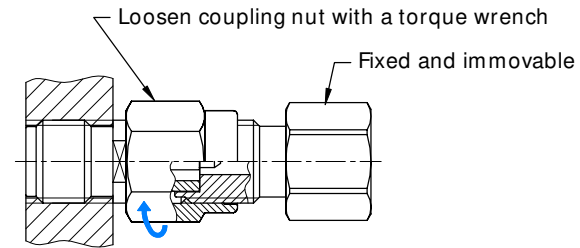


Step 1



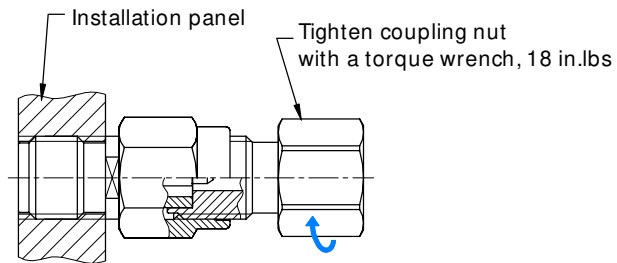
Securely tighten the coupling nut of the thread-in connector onto the tool.
(T29003: Fixed and immovable)

Step 3



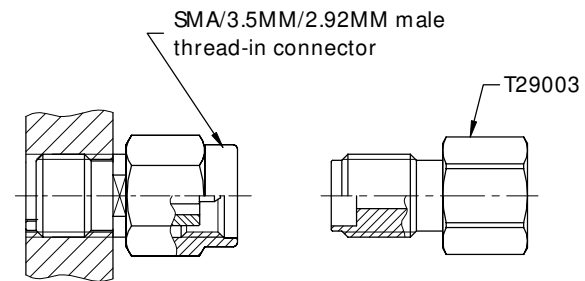
Using a torque wrench, loosen the coupling nut. (T29003 remains fixed and immovable.)

Step 2



Screw the component (from Step 1) into the installation panel.

Step 4



The SMA/3.5mm/2.92mm male thread-in connector has been successfully mated and torqued to specification.