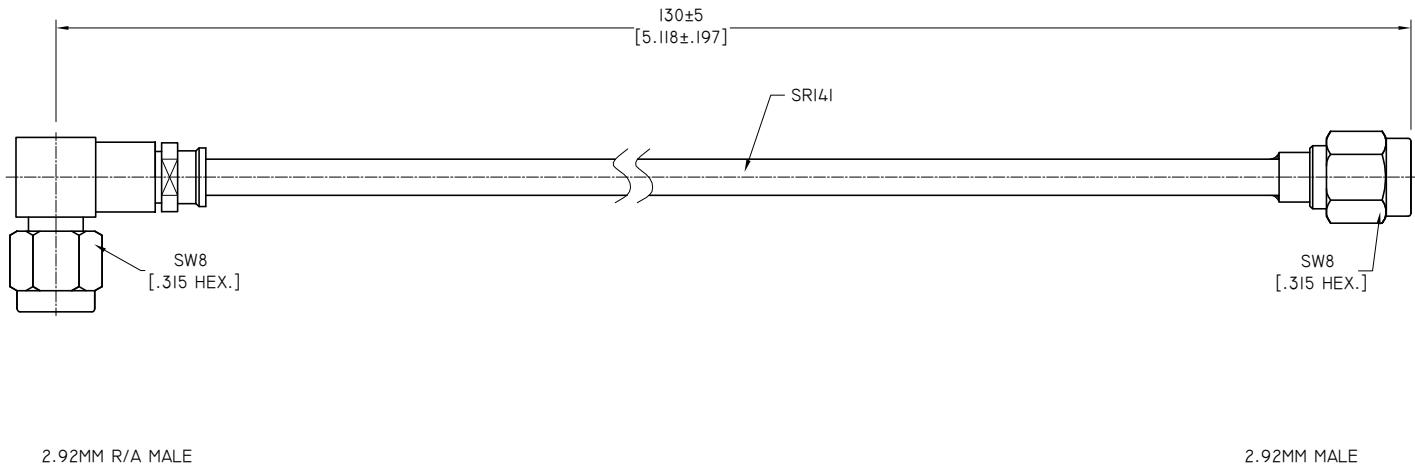


ELECTRICAL SPECIFICATIONS:

- 1 IMPEDANCE: 50 Ω
- 2 FREQUENCY RANGE: DC~27GHZ
- 3 VSWR: 1.30 MAX.
- 4 INSERTION LOSS: 0.90 DB MAX.



TITLE
 CABLE ASSEMBLY, 2.92MM R/A MALE TO 2.92MM
 STRAIGHT MALE, SRI4I CABLE, 130MM

NOTES:
 1. UNLESS OTHERWISE SPECIFIED ALL DIMENSIONS ARE NOMINAL.
 2. ALL SPECIFICATIONS ARE SUBJECT TO CHANGED WITHOUT NOTICE AT ANY TIME.
 3. DIMENSIONS ARE IN MILLIMETERS, DIMENSIONS IN [] ARE IN INCHES
 4. LENGTH TOLERANCE IS ±1.5%.

VIEW	PART NO.		
	SRI4I-29LM-29M-130MM		
SIZE	SCALE	SHEET	REV.
A3	2:1	1/1	A