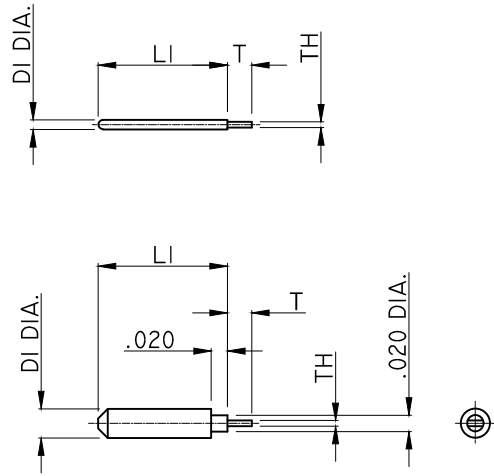


MATERIAL & FINISH

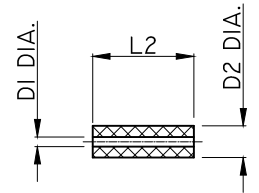
LAUNCH PIN: BERYLLIUM COPPER ALLOY, GOLD PLATING

REVISIONS			
REV.	DESCRIPTION	DATE	APPROVED
A	INITIAL RELEASE	05/10/19	J. QU

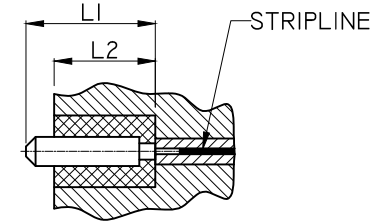
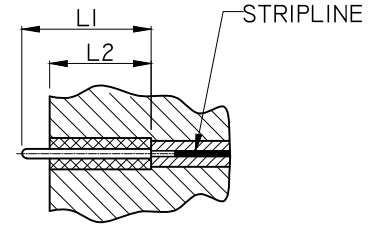
DIELECTRIC TRANSITION



* APPLICABLE TO .036 PIN ONLY

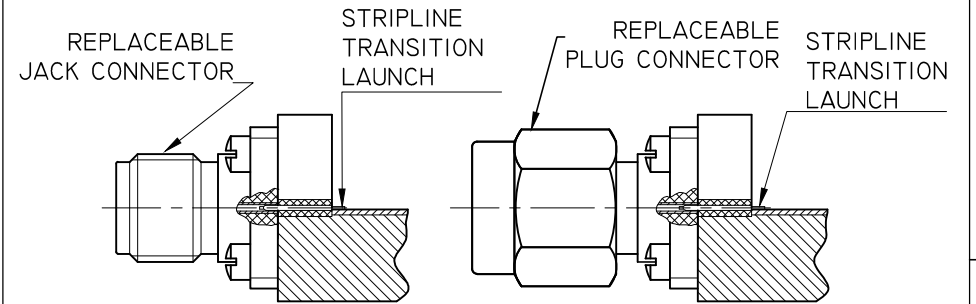


* DIELECTRIC IS PTFE



.036	.117	.050	.004	.175	.125	S-010G	S-010P	S-010D
.020	.064			.237	.187	S-009G	S-009P	S-009D
				.160	.125	S-008G	S-008P	S-008D
		.225		.187	S-007G	S-007P	S-007D	
.015	.048	.040		.160	.125	S-006G	S-006P	S-006D
.012	.039			.025	.225	.187	S-005G	S-005P
			.160		.125	S-004G	S-004P	S-004D
.009	.029	.015	.003	.225	.187	S-003G	S-003P	S-003D
				.160	.125	S-002G	S-002P	S-002D
DI DIA.	D2 DIA.	T	TH	LI	L2	LAUNCH PIN & DIELECTRIC*	LAUNCH PIN ONLY	DIELECTRIC* ONLY
ACCESSORY NUMBERS								

APPLICATION



DRAWN	W. YANG	DATE	05/10/19
CHECKED	X. B. YANG	DATE	05/10/19
APPROVED	J. QU	DATE	05/10/19



TITLE
LAUNCH PIN/TAB TRANSITIONS TO STRIPLINE CIRCUITS FOR FLANGE MOUNT CONNECTORS

UNLESS OTHERWISE SPECIFIED DIMENSIONS ARE IN MILLIMETERS. DIMENSIONS IN [] ARE IN INCHES FOR CUSTOMER REFERENCE ONLY UNLESS OTHERWISE SPECIFIED TOLERANCE ARE:
.XX ±0.13 [.005"]
.X ±0.20 [.008"]
X ±0.50 [.019"]
.X° ±1°
X° ±2°

THESE DRAWINGS AND SPECIFICATIONS ARE THE PROPERTY OF ANOISON ELECTRONICS LTD AND SHOULD NOT BE USED WITHOUT WRITTEN PERMISSION COPYRIGHT © 2019 ANOISON ELECTRONICS LTD

VIEW	PART NO. S-XXX		
SIZE A3	SCALE 4:1	SHEET 1/1	REV. A