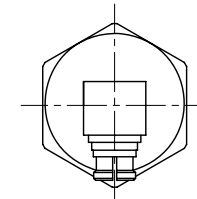
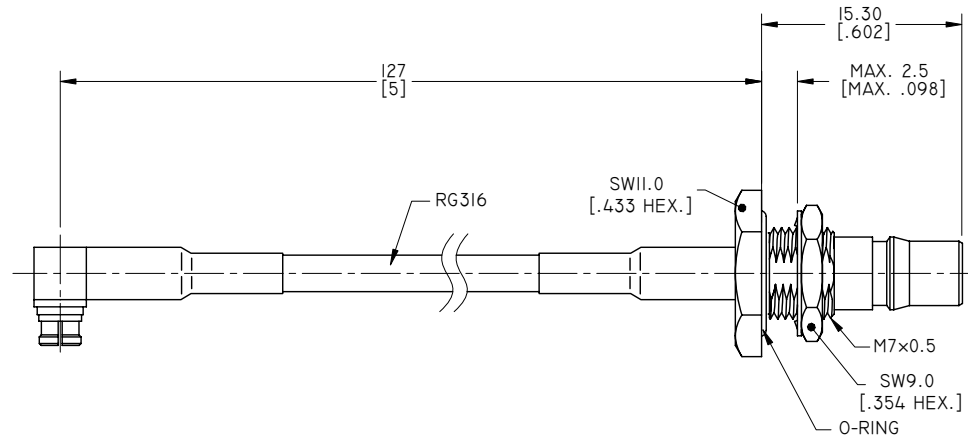
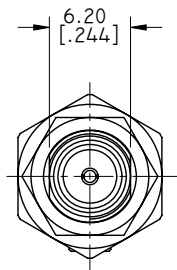


ELECTRICAL DATA:

- 1 IMPEDANCE: 50 OHMS
- 2 FREQUENCY RANGE: DC~6 GHz
- 3 VSWR: 1.30 MAX. DC~3GHz  
1.50 MAX. 3~6GHz



SMP LF

QMAFBW



TITLE  
CABLE ASSEMBLY, SMP R/A FEMALE TO QMA FEMALE  
BULKHEAD WATERPROOF, RG316 CABLE, 5 INCHS

- NOTES:  
 1. UNLESS OTHERWISE SPECIFIED ALL DIMENSIONS ARE NOMINAL.  
 2. ALL SPECIFICATIONS ARE SUBJECT TO CHANGED WITHOUT NOTICE AT ANY TIME.  
 3. DIMENSIONS ARE IN MILLIMETERS, DIMENSIONS IN [ ] ARE IN INCHES  
 4. LENGTH TOLERANCE IS ±1.5%.

VIEW



PART NO.

RG316-SMPLF-QMAFBW-5

SIZE A3	SCALE 2.5:1	SHEET 1/1	REV. A
------------	----------------	--------------	-----------