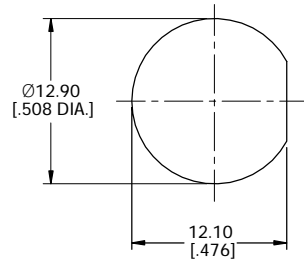
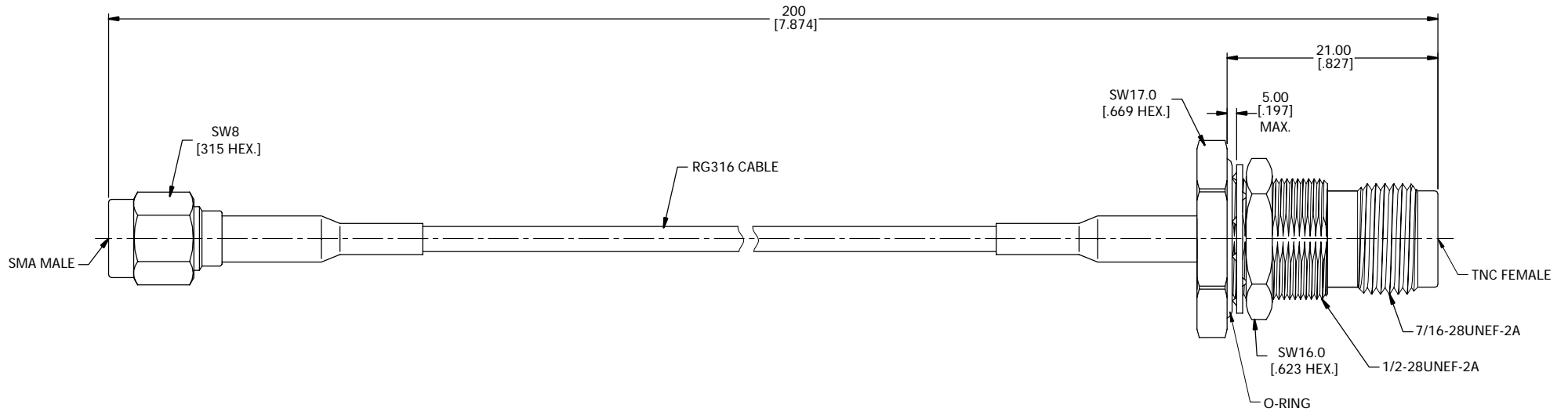


ELECTRICAL DATA:  
 1 IMPEDANCE: 50 Ω  
 2 FREQUENCY RANGE: DC-3 GHz

REVISIONS			
REV.	DESCRIPTION	DATE	APPROVED
A	INITIAL RELEASE	09/07/23	J. Q.



RECOMMENDED MOUNTING HOLE



TITLE  
 CABLE ASSEMBLY, SMA STRAIGHT MALE TO TNC STRAIGHT WATERPROOF BULKHEAD FEMALE, RG316 CABLE, 20CM

VIEW	PART NO. RG316-SMAM-TNCFBW-20CM		
	SIZE A3	SCALE 2.5:1	SHEET 1/1
			REV. A

NOTES:  
 1. UNLESS OTHERWISE SPECIFIED ALL DIMENSIONS ARE NOMINAL.  
 2. ALL SPECIFICATIONS ARE SUBJECT TO CHANGED WITHOUT NOTICE AT ANY TIME.  
 3. DIMENSIONS ARE IN MILLIMETERS, DIMENSIONS IN [ ] ARE IN INCHES  
 4. LENGTH TOLERANCE IS ±2%.