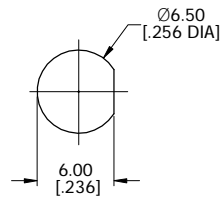
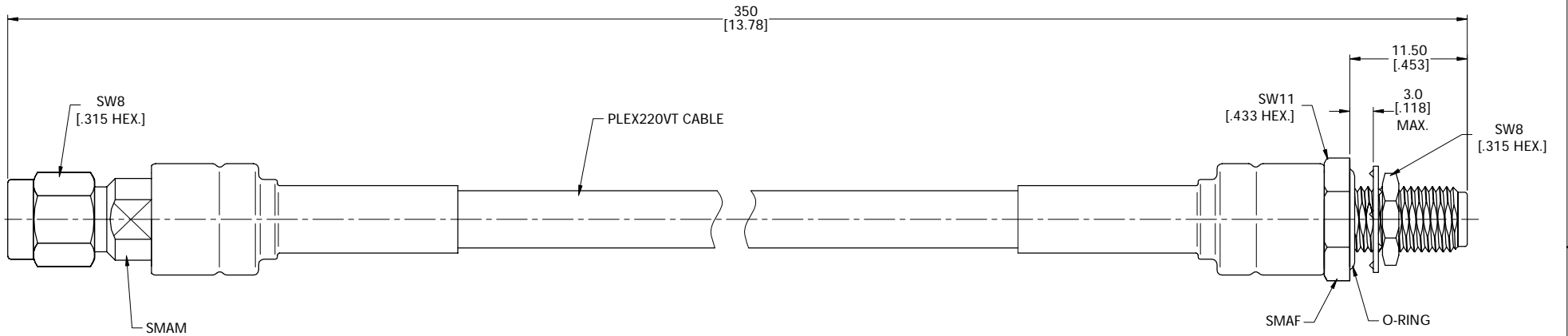


ELECTRICAL DATA:
 1 IMPEDANCE: 50 Ω
 2 FREQUENCY RANGE: 4-5 GHz

| REVISIONS | | | |
|-----------|-----------------|----------|----------|
| REV. | DESCRIPTION | DATE | APPROVED |
| A | INITIAL RELEASE | 03/15/23 | J. Q. |
| | | | |



RECOMMENDED MOUNTING HOLE



TITLE
 CABLE ASSEMBLY, SMA STRAIGHT MALE TO SMA STRAIGHT BULKHEAD WATERPROOF FEMALE, PLEX220VT CABLE, 350 MM

| | | | |
|------|---|----------------|--------------|
| VIEW | PART NO. PLEX220VT-SMAM-SMAFBW-350MM | | |
| | SIZE A3 | SCALE 2.5:1 | SHEET 1/1 |
| | REV. A | | |

NOTES:
 1. UNLESS OTHERWISE SPECIFIED ALL DIMENSIONS ARE NOMINAL.
 2. ALL SPECIFICATIONS ARE SUBJECT TO CHANGED WITHOUT NOTICE AT ANY TIME.
 3. DIMENSIONS ARE IN MILLIMETERS, DIMENSIONS IN [] ARE IN INCHES
 4. LENGTH TOLERANCE IS ±2%.