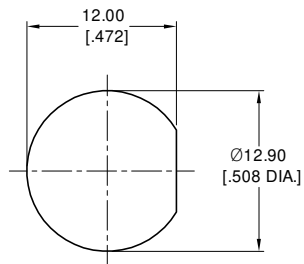
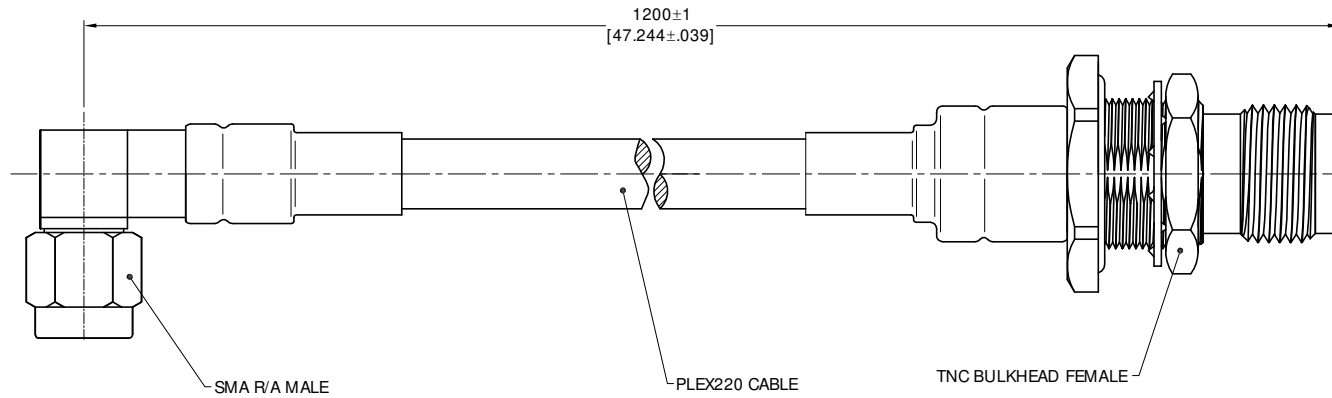


ELECTRICAL DATA:

- 1. IMPEDANCE: 50 Ω
- 2. FREQUENCY RANGE: DC-10 GHz
- 3. VSWR: 1.40 MAX
- 4. INSERTION LOSS: 1.15dB MAX



RECOMMENDED MOUNTING HOLE

- NOTES:
- 1. UNLESS OTHERWISE SPECIFIED ALL DIMENSIONS ARE NOMINAL.
 - 2. ALL SPECIFICATIONS ARE SUBJECT TO CHANGED WITHOUT NOTICE AT ANY TIME
 - 3. DIMENSIONS ARE IN MILLIMETERS, DIMENSIONS IN [] ARE IN INCHES
 - 4. LENGTH TOLERANCE IS ±2%.



TITLE
CABLE ASSEMBLY, SMA R/A MALE TO TNC STRAIGHT
BULKHEAD WATERPROOF FEMALE, PLEX220VT CABLE

VIEW	PART NO. PLEX220-SMALM-TNCFB-120CM			
	SIZE A3	SCALE 2.5:1	SHEET 1/1	REV. A