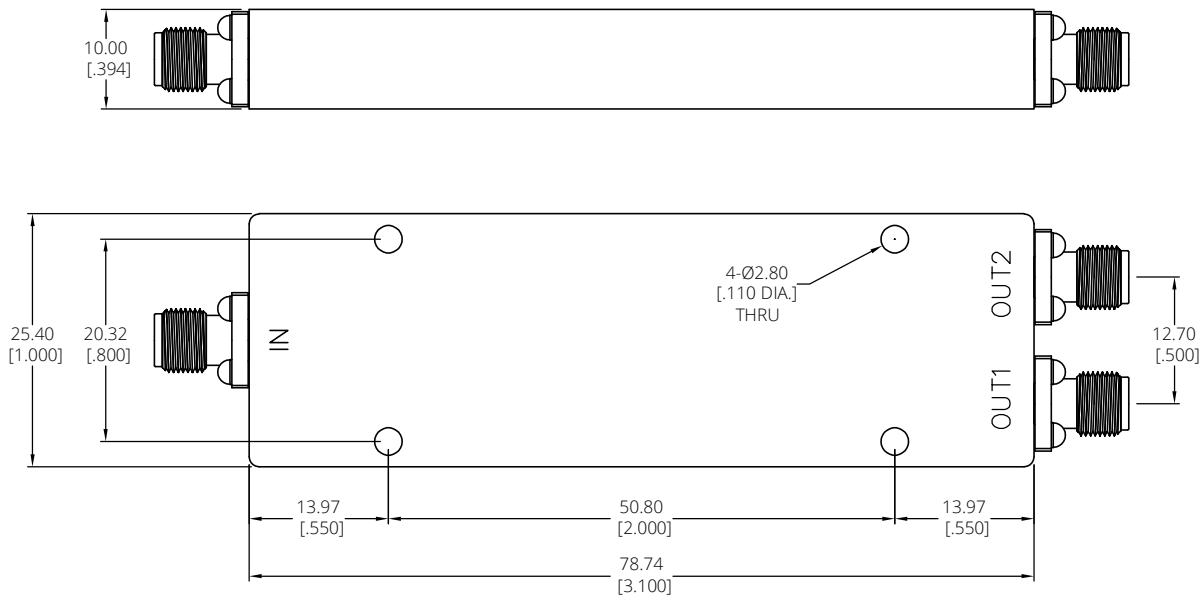


ELECTRICAL DATA	
NUMBER OF OUTPUT PORTS	2
FREQUENCY RANGE	1~40 GHz
IMPEDANCE: 50 Ω	50 Ω
VSWR	≤ 1.60
INSERTION LOSS	≤ 3.2 DB (DOES NOT CONTAIN THEORY LOSS 3.01dB)
ISOLATION	≥ 16 DB
AMPLITUDE BLANCE	± 0.5 DB
PHASE BALANCE	≤ ± 5°
POWER	FORWARD: 10W Max. ; REVERSE: 1.0W Max.

MATERIAL AND FINISH	
CONNECTOR(2.92 MM FEMALE)	STAINLESS STEEL, PASSIVATED
HOUSING	6061 ALUMINUM ALLOY, PAINTED, BLACK

REVISIONS			
REV.	DESCRIPTION	DATE	APPROVED
A	INITIAL RELEASE	11/08/21	J. QU

ENVIRONMENTAL DATA	
OPERATING TEMPERATURE	-40°C TO +85°C
RoHS COMPLIANT	2011/65/EU(RoHS) AND 2015/863/(RoHS)
REACH COMPLIANT	1907/2006/EC(REACH)
NET WEIGHT	0.045Kg



DRAWN	W. YANG	DATE	11/08/21
CHECKED	X. B. YANG	DATE	11/08/21
APPROVED	J. QU	DATE	11/08/21
UNLESS OTHERWISE SPECIFIED DIMENSIONS ARE IN MILLIMETERS, DIMENSIONS IN [ ] ARE IN INCHES FOR CUSTOMER REFERENCE ONLY UNLESS OTHERWISE SPECIFIED TOLERANCE ARE:		THESE DRAWINGS AND SPECIFICATIONS ARE THE PROPERTY OF ANOISON ELECTRONICS LTD AND SHOULD NOT BE USED WITHOUT WRITTEN PERMISSION COPYRIGHT © 2021 ANOISON ELECTRONICS LTD	
XX	±0.30 [012"]		
X	±0.40 [016"]		
x	±0.50 [019"]		
x*	±1°		
x*	±2°		

TITLE 1-40GHz 2-WAY 2.92 POWER DIVIDER			
VIEW 		PART NO. PD2902A	
SIZE A3	SCALE 2:1	SHEET 1/1	REV. A