

4

3

2

1

**MATERIAL & FINISH:**

- 1 BODY : STAINLESS STEEL, GOLD PLATED
- 2 CENTER CONTACT: BERYLLIUM COPPER ALLOY, GOLD PLATED
- 3 INSULATOR: PEI
- 4 CLAMP NUT: STAINLESS STEEL, GOLD PLATED
- 5 LOCK WASHER: PHOSPHOR BRONZE, GOLD PLATED

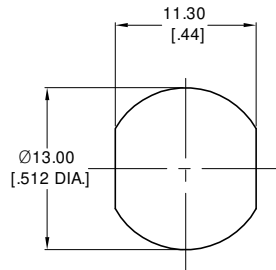
**ELECTRICAL DATA:**

- 1 IMPEDANCE: 50 Ω
- 2 FREQUENCY RANGE: DC~65 GHz
- 3 VSWR: 1.30 MAX.
- 4 INSERTION LOSS: ≤0.05\* √F(GHZ) DB

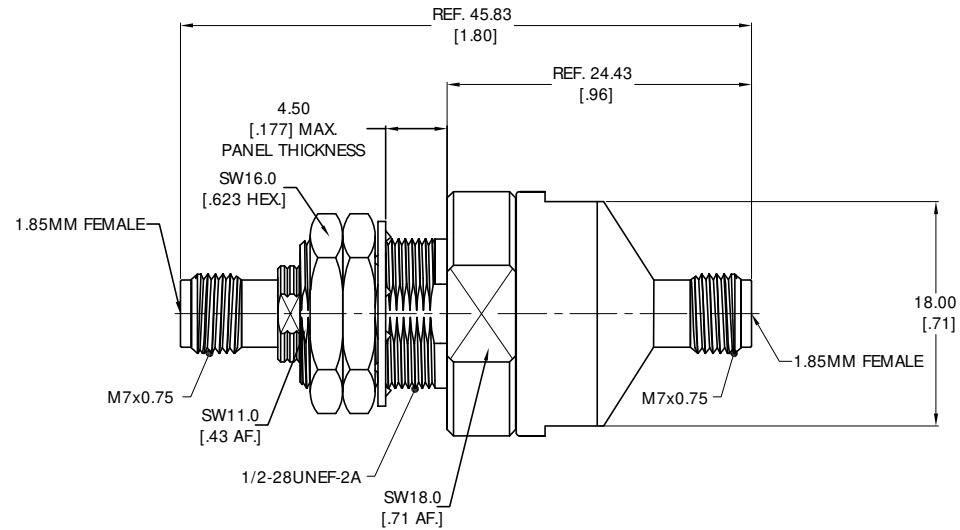
**ENVIRONMENTAL DATA:**

- 1 TEMPERATURE RANGE: -55 °C~+125 °C
- 2 2011/65/EU(RoHS) AND 2015/863/(RoHS): COMPLIANT
- 3 1999/45/EC(REACH): COMPLIANT

REVISIONS			
REV.	DESCRIPTION	DATE	APPROVED
A	INITIAL RELEASE	07/28/20	J QU



RECOMMENDED MOUNTING HOLE



DRAWN	P. CHEN	DATE	07/28/20
CHECKED	X. B. YANG	DATE	07/28/20
APPROVED	J QU	DATE	07/28/20
UNLESS OTHERWISE SPECIFIED DIMENSIONS ARE IN MILLIMETERS, DIMENSIONS IN [ ] ARE IN INCHES FOR CUSTOMER REFERENCE ONLY UNLESS OTHERWISE SPECIFIED TOLERANCE ARE:		THESE DRAWINGS AND SPECIFICATIONS ARE THE PROPERTY OF ANOISON ELECTRONICS LTD AND SHOULD NOT BE USED WITHOUT WRITTEN PERMISSION COPYRIGHT © 2020 ANOISON ELECTRONICS LTD	
XX	±0.13 [0.005"]		
X	±0.20 [0.008"]		
X	±0.50 [0.019"]		
X"	±1°		
X"	±2°		



TITLE			
PRECISION ADAPTER 1.85MM BULKHEAD FEMALE TO 1.85MM FEMALE			
VIEW	PART NO.		
	PA6262CA		
SIZE	SCALE	SHEET	REV.
A3	2.5:1	1/1	A

4

3

2

1