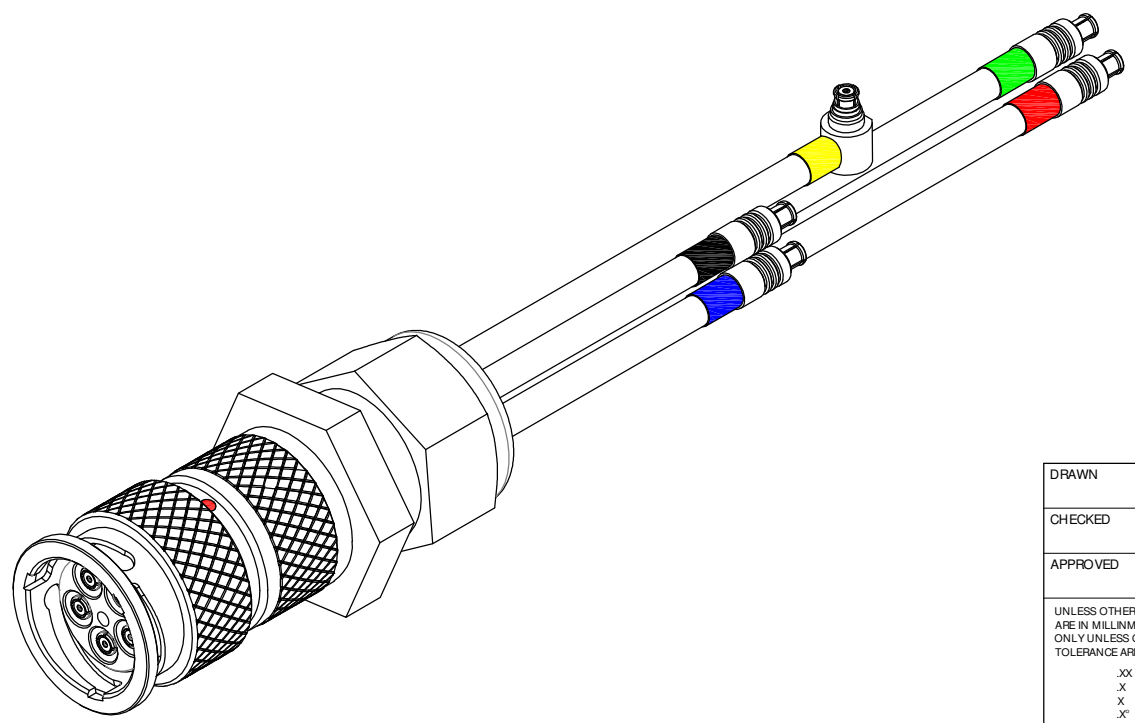
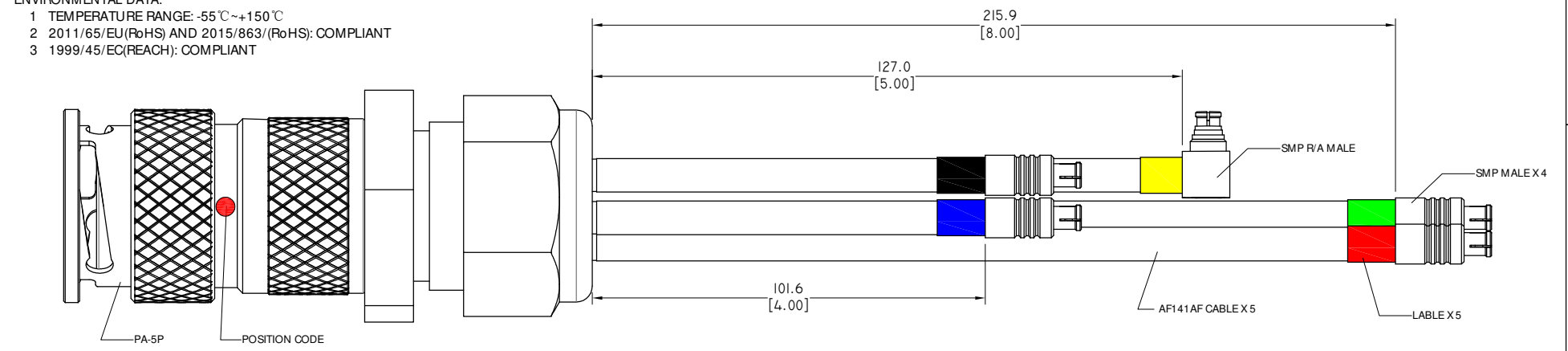


| REVISIONS | | | |
|-----------|-----------------|----------|----------|
| REV. | DESCRIPTION | DATE | APPROVED |
| A | INITIAL RELEASE | 05/12/21 | J QU |

ELECTRICAL DATA:
 1 IMPEDANCE: 50 Ω
 2 FREQUENCY RANGE: DC-6GHZ
 3 VSWR: 1.16 TYP. 1.25 MAX.
 4 INSERTION LOSS: 0.90 dB MAX.
 5 SHIELDING EFFECTIVENESS: > 90 DB

ENVIRONMENTAL DATA:
 1 TEMPERATURE RANGE: -55°C~+150°C
 2 2011/65/EU(RoHS) AND 2015/863/(RoHS): COMPLIANT
 3 1999/45/EC(REACH): COMPLIANT



| LABLE | S/N |
|--------|-----|
| GREEN | 1 |
| RED | 2 |
| YELLOW | 3 |
| BLACK | 4 |
| BLUE | 5 |

| | | | |
|---|------------|--|----------|
| DRAWN | X. B. YANG | DATE | 05/12/21 |
| CHECKED | W. YANG | DATE | 05/12/21 |
| APPROVED | J QU | DATE | 05/12/21 |
| UNLESS OTHERWISE SPECIFIED DIMENSIONS ARE IN MILLIMETERS ONLY UNLESS OTHERWISE SPECIFIED TOLERANCE ARE: | | THESE DRAWINGS AND SPECIFICATIONS ARE THE PROPERTY OF ANOISON ELECTRONICS LTD AND SHOULD NOT BE USED WITHOUT WRITTEN PERMISSION COPYRIGHT © 2021 ANOISON ELECTRONICS LTD | |
| .XX | ±0.13 | | |
| .X | ±0.20 | | |
| X | ±0.50 | | |
| .X° | ±1° | | |
| X° | ±2° | | |

TITLE
 CABLE ASSEMBLY, PA-5 PLUG TO 5 SMP STRAIGHT FEMALE TO SMP FEMALE, AF141AF CABLE

VIEW

| | | | |
|---------------------|--------------|--------------|-----------|
| PART NO. PA5P-02 | | | |
| SIZE A3 | SCALE 4:1 | SHEET 1/1 | REV. A |