

4

3

2

1

MATERIAL & FINISH:

- 1 BODY: STAINLESS STEEL, PASSIVATED
- 2 CENTER CONTACT: BERYLLIUM COPPER ALLOY, GOLD PLATED
- 3 INSULATOR: PTFE
- 4 FASTENING NUT: STAINLESS STEEL, PASSIVATED
- 5 LOCK WASHER: PHOSPHOR BRONZE, GOLD PLATED-NO NICKEL PLATING

ELECTRICAL DATA:

- 1 IMPEDANCE: 50 Ω
- 2 FREQUENCY RANGE: DC~18 GHZ
- 3 VSWR: 1.25 MAX.

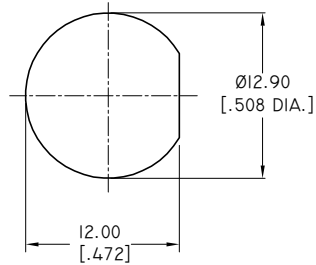
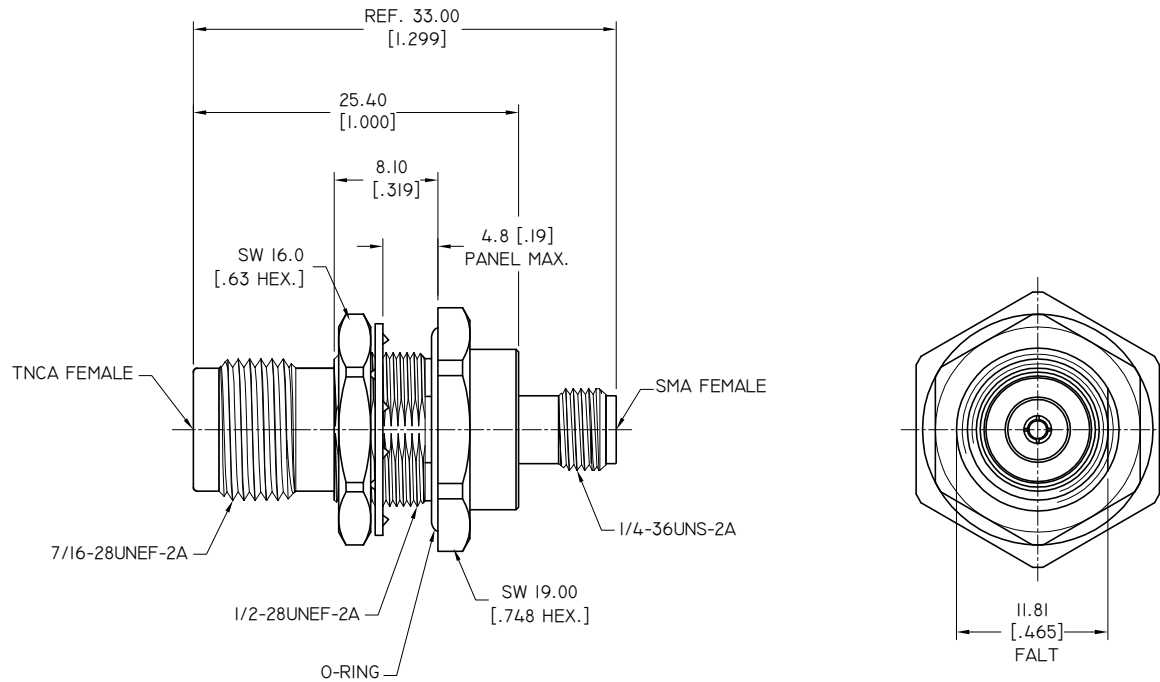
MECHANICAL DATA:

- 1 TORQUE MOUNTING NUT TO 3.05±0.3 NM [27±2.7 IN.LBS]

ENVIRONMENTAL DATA:

- 1 TEMPERATURE RANGE: -55 °C~+125 °C
- 2 2011/65/EU(RoHS) AND 2015/863/(RoHS): COMPLIANT
- 3 1907/2006/EC(REACH): COMPLIANT

REVISIONS			
REV.	DESCRIPTION	DATE	APPROVED
A	INITIAL RELEASE	04/28/20	J. QU

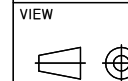


RECOMMENDED MOUNTING HOLE

DRAWN	X. B. YANG	DATE	04/28/20
CHECKED	W. YANG	DATE	04/28/20
APPROVED	J. QU	DATE	04/28/20
UNLESS OTHERWISE SPECIFIED DIMENSIONS ARE IN MILLIMETERS, DIMENSIONS IN [] ARE IN INCHES FOR CUSTOMER REFERENCE ONLY UNLESS OTHERWISE SPECIFIED TOLERANCE ARE:		THESE DRAWINGS AND SPECIFICATIONS ARE THE PROPERTY OF ANOISON ELECTRONICS LTD AND SHOULD NOT BE USED WITHOUT WRITTEN PERMISSION COPYRIGHT © 2020 ANOISON ELECTRONICS LTD	
.XX	±0.13 [.005"]		
.X	±0.20 [.008"]		
X	±0.50 [.019"]		
.X°	±1°		
X°	±2°		



TITLE
 PRECISION ADAPTER
 TNCA FEMALE BULKHEAD TO SMA FEMALE



VIEW		PART NO.	
		PA302IE	
SIZE	A3	SCALE	2.5:1
SHEET	1/1	REV.	A

4

3

2

1