

4

3

2

1

**MATERIAL & FINISH:**

- 1 BODY: STAINLESS STEEL, PASSIVATED
- 2 CENTER CONTACT: BERYLLIUM COPPER, GOLD PLATED
- 3 INSULATOR: PEI
- 4 FASETNING NUT: STAINLESS STEEL, PASSIVATED
- 5 LOCK WASHER: STAINLESS STEEL, PASSIVATED

**ELECTRICAL DATA:**

- 1 IMPEDANCE: 50 Ω
- 2 FREQUENCY RANGE: DC~40 GHz
- 3 VSWR: 1.05±.007xƒ (GHz)
- 4 INSERTION LOSS: .035x√ƒ (GHz) dB

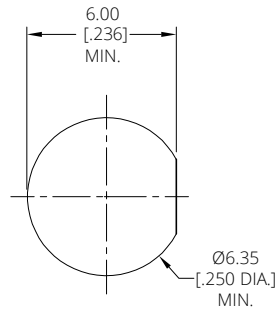
**ENVIRONMENTAL DATA:**

- 1 TEMPERATURE RANGE: -65°C~+125°C
- 2 2011/65/EU(RoHS) AND 2015/863/(RoHS): COMPLIANT
- 3 1907/2006/EC(REACH): COMPLIANT

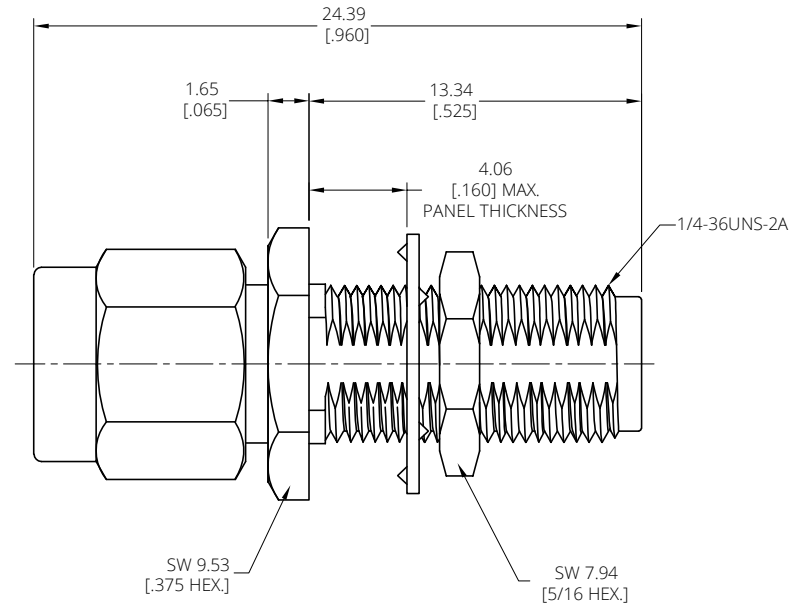
**MECHANICAL DATA:**

- 1 CYCLES: 500 MIN.
- 2 RECOMMENDED MATING TORQUE TO MALE COUPLING NUT IS 8 TO 10 IN.LBS
- 3 RECOMMENDED TORQUE TO FASTEN ADAPTER TO PANEL IS 12 TO 15 IN.LBS

REVISIONS			
REV.	DESCRIPTION	DATE	APPROVED
A	INITIAL RELEASE	07/19/24	J. Q



RECOMMENDED MOUNTING HOLE



DRAWN	W. Y	DATE	07/19/24
CHECKED	X. Y	DATE	07/19/24
APPROVED	J. Q	DATE	07/19/24
UNLESS OTHERWISE SPECIFIED DIMENSIONS ARE IN MILLIMETERS, DIMENSIONS IN [ ] ARE IN INCHES FOR CUSTOMER REFERENCE ONLY UNLESS OTHERWISE SPECIFIED TOLERANCE ARE:		THESE DRAWINGS AND SPECIFICATIONS ARE THE PROPERTY OF ANOISON ELECTRONICS LTD AND SHOULD NOT BE USED WITHOUT WRITTEN PERMISSION COPYRIGHT © 2024 ANOISON ELECTRONICS LTD	
XX	±0.13 [005"]		
X	±0.20 [008"]		
x	±0.50 [019"]		
x°	±1°		
x°	±2°		



TITLE			
PRECISION ADAPTER, 2.92MM BULKHEAD MALE TO 2.92MM FEMALE			
VIEW	PART NO.		
	PA2929SB		
SIZE	SCALE	SHEET	REV.
A3	5:1	1/1	A

4

3

2

1