

4

3

2

1

MATERIAL & FINISH

- 1 BODY: STAINLESS STEEL, PASSIVATED
- 2 CENTER CONTACT: BERYLLIUM COPPER ALLOY, GOLD PLATED
- 3 INSULATOR: PEI

ELECTRICAL DATA:

- 1 IMPEDANCE: 50 OHMS
- 2 FREQUENCY RANGE: DC~40 GHz
- 3 VSWR: SEE TABLE

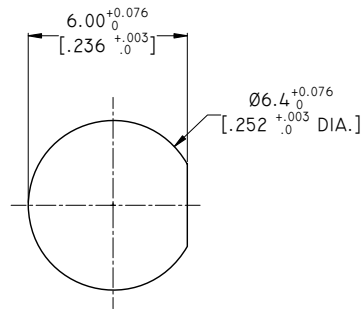
ENVIRONMENTAL DATA:

- 1 TEMPERATURE RANGE: -55°C~+165°C
- 2 2011/65/EU (RoHS): COMPLIANT

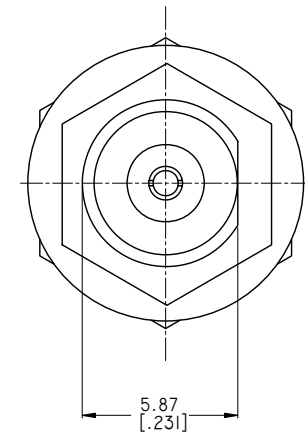
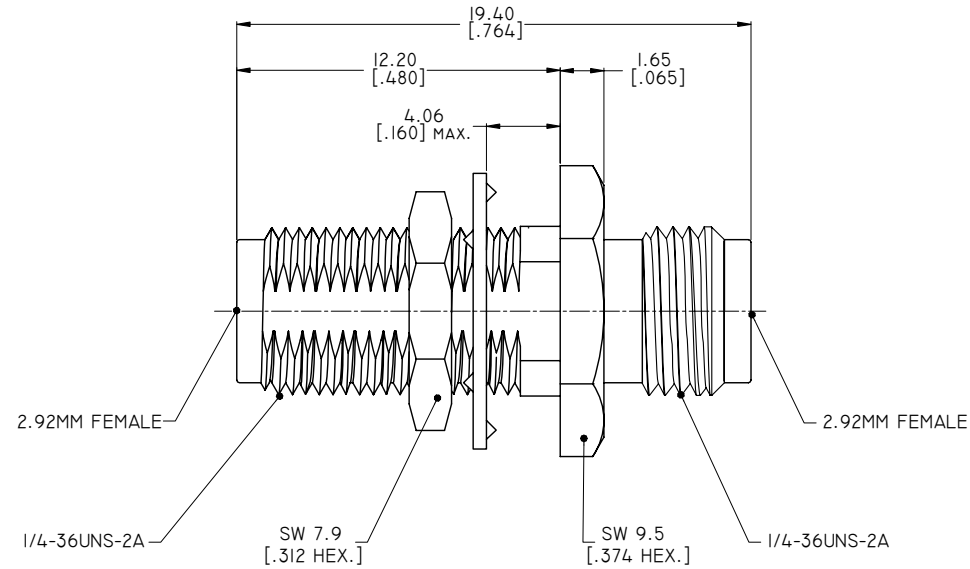
MECHANICAL DATA:

- 1 CYCLES: 500 MIN.
- 2 COUPLING NUT MATING TORQUE: 8~10 LBS

REVISIONS			
REV.	DESCRIPTION	DATE	APPROVED
A	INITIAL RELEASE	02/20/16	J. QU
B	PA2929EA WAS ANO 292-292-1365	03/14/16	J. QU



RECOMMENDED MOUNTING HOLE



PART NO.	VSWR
PA2929EA	1.20 MAX.
PA2929EA-I	1.15 MAX.

DRAWN	P. CHEN	DATE	03/14/16
CHECKED	L. YANG	DATE	03/14/16
APPROVED	J. QU	DATE	03/14/16
UNLESS OTHERWISE SPECIFIED DIMENSIONS ARE IN MILLIMETERS. DIMENSIONS IN [ ] ARE IN INCHES FOR CUSTOMER REFERENCE ONLY UNLESS OTHERWISE SPECIFIED TOLERANCE ARE:		THESE DRAWINGS AND SPECIFICATIONS ARE THE PROPERTY OF ANOISON ELECTRONICS LTD AND SHOULD NOT BE USED WITHOUT WRITTEN PERMISSION COPYRIGHT © 2016 ANOISON ELECTRONICS LTD	
.XX	±0.13 [.005"]		
.X	±0.20 [.008"]		
X	±0.50 [.019"]		
.X°	±1°		
X°	±2°		



TITLE			
PRECISION ADAPTER, 2.92MM FEMALE BULKHEAD TO 2.92MM FEMALE			
VIEW		PART NO.	
		PA2929EA	
SIZE	SCALE	SHEET	REV.
A3	5:1	1/1	B

4

3

2

1