

MATERIAL & FINISH:

1. BODY: STAINLESS STEEL, PASSIVATED
2. CENTER CONTACT: BERYLLIUM COPPER ALLOY, GOLD PLATED
3. FASTENING NUT: STAINLESS STEEL, PASSIVATED
4. WASHER: PHOSPHOR BRONZE
5. INSULATOR: PEI

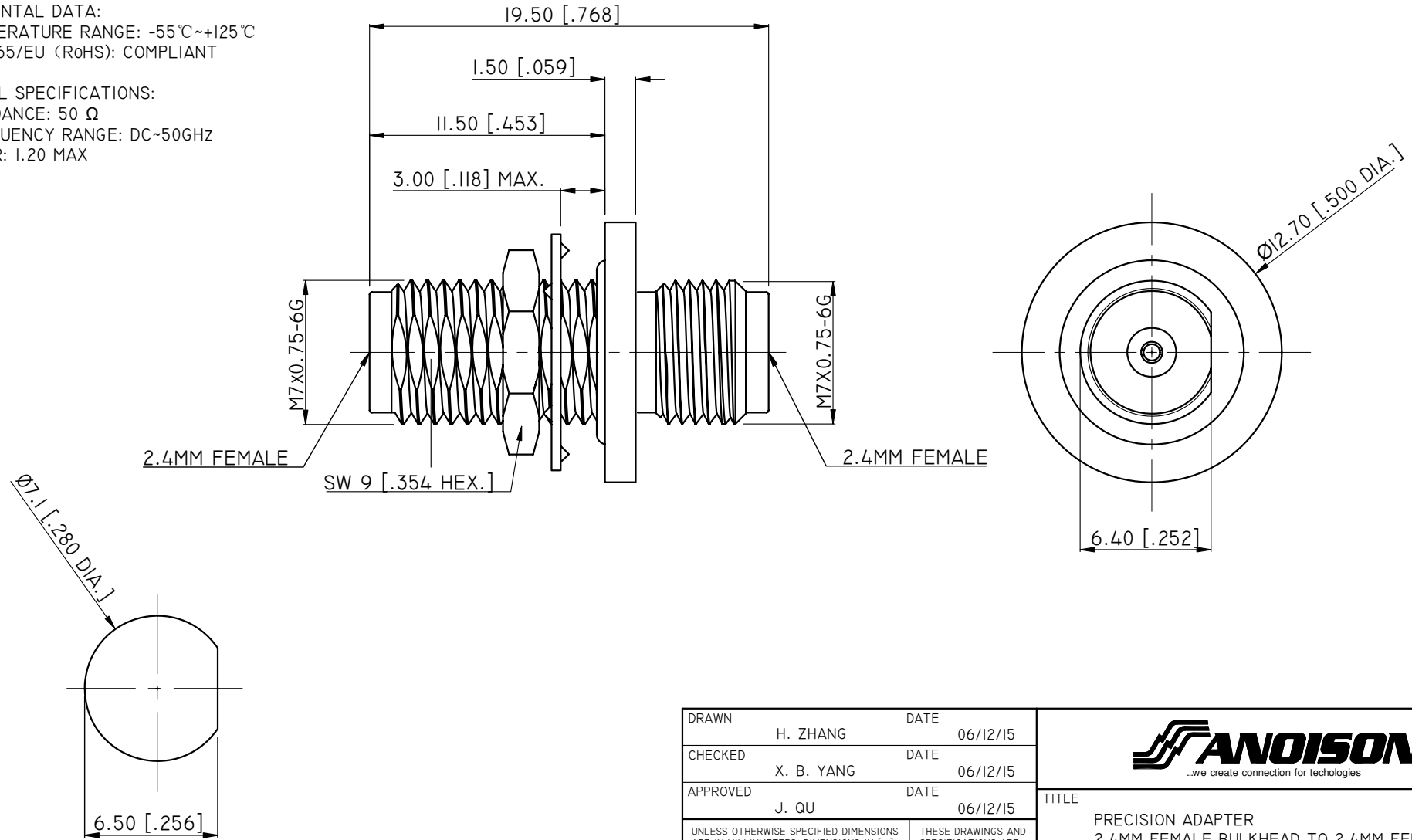
ENVIRONMENTAL DATA:

1. TEMPERATURE RANGE: -55°C~+125°C
2. 2011/65/EU (RoHS): COMPLIANT

ELECTRICAL SPECIFICATIONS:

1. IMPEDANCE: 50 Ω
2. FREQUENCY RANGE: DC~50GHZ
3. VSWR: 1.20 MAX

REVISIONS			
REV.	DESCRIPTION	DATE	APPROVED
A	INITIAL RELEASE	01/30/13	J. QU
B	PART NO. CHANGED	06/12/15	J. QU



RECOMMENDED MOUNTING HOLE

DRAWN	H. ZHANG	DATE	06/12/15																		
CHECKED	X. B. YANG	DATE	06/12/15																		
APPROVED	J. QU	DATE	06/12/15																		
UNLESS OTHERWISE SPECIFIED DIMENSIONS ARE IN MILLIMETERS, DIMENSIONS IN [] ARE IN INCHES FOR CUSTOMER REFERENCE ONLY UNLESS OTHERWISE SPECIFIED TOLERANCE ARE:		THESE DRAWINGS AND SPECIFICATIONS ARE THE PROPERTY OF ANOISON ELECTRONICS LTD AND SHOULD NOT BE USED WITHOUT WRITTEN PERMISSION COPYRIGHT © 2015 ANOISON ELECTRONICS LTD																			
.XX	±0.13 [0.005"]	<table border="1"> <tr> <td colspan="2">TITLE</td> <td colspan="2">PART NO.</td> </tr> <tr> <td colspan="2">PRECISION ADAPTER</td> <td colspan="2">PA2222E</td> </tr> <tr> <td>VIEW</td> <td>SCALE</td> <td>SHEET</td> <td>REV.</td> </tr> <tr> <td></td> <td>A3</td> <td>1/1</td> <td>B</td> </tr> </table>				TITLE		PART NO.		PRECISION ADAPTER		PA2222E		VIEW	SCALE	SHEET	REV.		A3	1/1	B
TITLE						PART NO.															
PRECISION ADAPTER						PA2222E															
VIEW	SCALE					SHEET	REV.														
	A3					1/1	B														
.X	±0.20 [0.008"]																				
X	±0.50 [0.019"]																				
.X°	±1°																				
X°	±2°																				
<p>...we create connection for technologies</p>		TITLE PRECISION ADAPTER 2.4MM FEMALE BULKHEAD TO 2.4MM FEMALE																			
VIEW		PART NO.		REV.																	
		PA2222E		B																	
SIZE	SCALE	SHEET	REV.																		
A3	5:1	1/1	B																		