

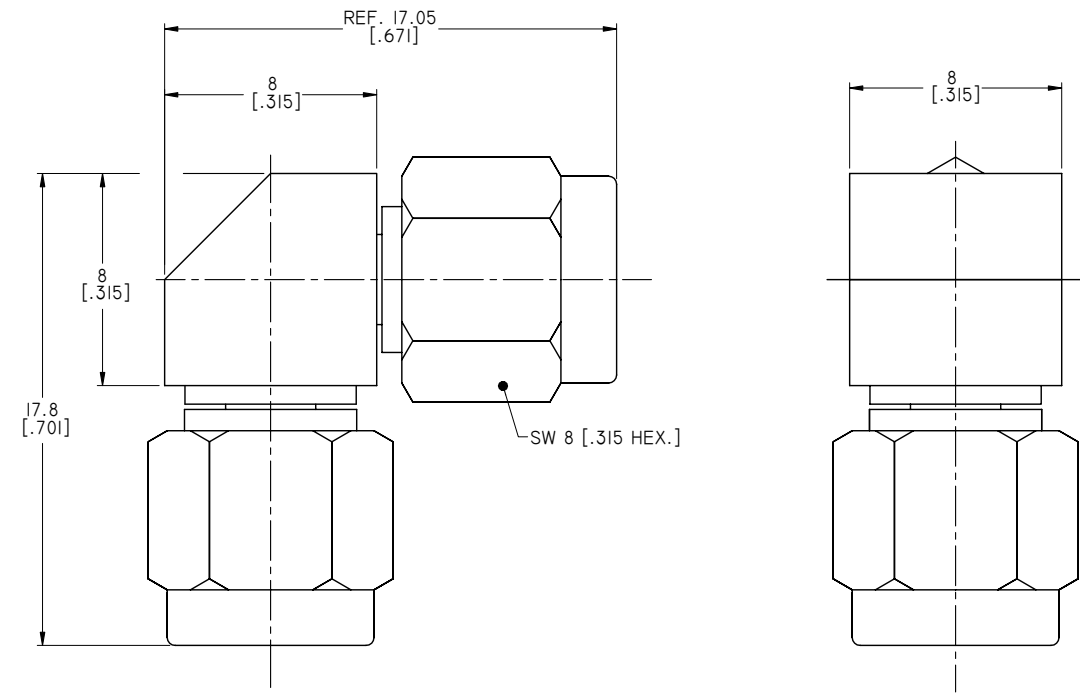
1.0 MATERIAL & FINISH:  
 1.1 CENTER CONTACT: BERYLLIUM COPPER ALLOY, GOLD PLATED  
 1.2 INSULATOR: PTFE/PEI  
 1.3 BODY: STAINLESS STEEL, PASSIVATED  
 1.4 COUPLING NUT: STAINLESS STEEL, PASSIVATED

2.0 ENVIRONMENTAL DATA:  
 2.1 TEMPERATURE RANGE: -55°C~+125°C  
 2.2 2011/65/EU (RoHS): COMPLIANT

3.0 ELECTRICAL SPECIFICATIONS:  
 3.1 IMPEDANCE: 50 Ω  
 3.2 FREQUENCY RANGE: DC~27GHZ  
 3.3 VSWR: 1.25 MAX.

4.0 MECHANICAL SPECIFICATIONS:  
 4.1 TORQUE WRENCH: 5 IN.LBS

REVISIONS			
REV.	DESCRIPTION	DATE	APPROVED
A	INITIAL RELEASE	08/07/13	J. QU
B	CHANGED P/N	05/29/15	J. QU



DRAWN	X. B. YANG	DATE	05/29/15
CHECKED	L. YANG	DATE	05/29/15
APPROVED	J. QU	DATE	05/29/15
UNLESS OTHERWISE SPECIFIED DIMENSIONS ARE IN MILLINMETERS. DIMENSIONS IN [ ] ARE IN INCHES FOR CUSTOMER REFERENCE ONLY UNLESS OTHERWISE SPECIFIED TOLERANCE ARE:		THESE DRAWINGS AND SPECIFICATIONS ARE THE PROPERTY OF ANOISON ELECTRONICS LTD AND SHOULD NOT BE USED WITHOUT WRITTEN PERMISSION COPYRIGHT © 2015 ANOISON ELECTRONICS LTD	
.XX	±0.13 [.005"]		
.X	±0.20 [.008"]		
X	±0.50 [.019"]		
.X°	±1°		
X°	±2°		



TITLE			
PRECISION ADAPTER RIGHT ANGLE SMA MALE TO SMA MALE			
VIEW		PART NO.	
		PA2121J	
SIZE	SCALE	SHEET	REV.
A3	5:1	1/1	A