

MATERIAL & FINISH:

- 1 BODY: STAINLESS STEEL, PASSIVATED
- 2 CENTER CONTACT: BERYLLIUM COPPER ALLOY, GOLD PLATED
- 3 FASTENING NUT: BRASS, NICKEL PLATED
- 4 LOCK WASHER: PHOSPHOR BRONZE, NICKEL PLATED
- 5 INSULATOR: PTFE

MECHANICAL DATA:

- 1 TORQUE WRENCH: 8 IN. LBS
- 2 MECHANICAL DURABILITY: 500 CYCLES MIN.

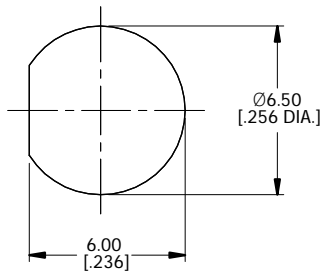
ELECTRICAL DATA:

- 1 IMPEDANCE: 50 Ω
- 2 FREQUENCY RANGE: DC~26.5 GHz
- 3 VSWR: 1.15 MAX.
- 4 INSERTION LOSS: 0.04 X √F GHz dB MAX.

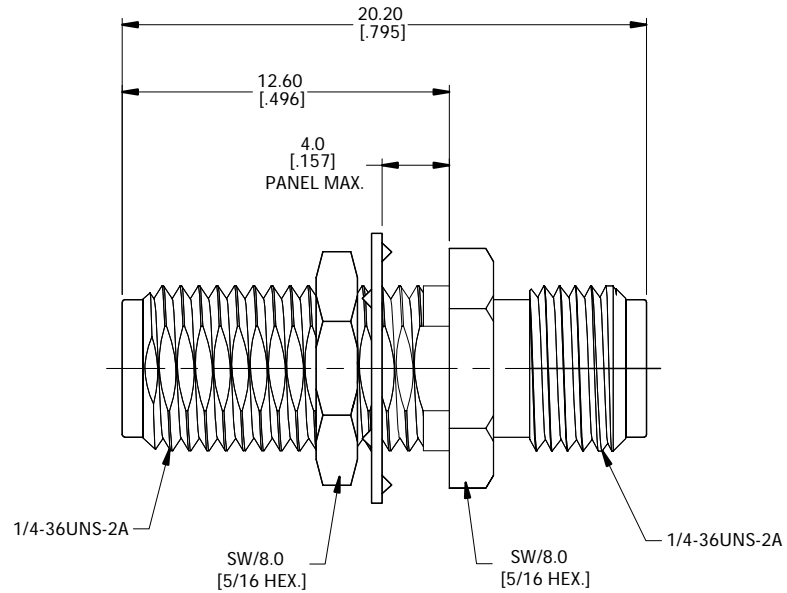
ENVIRONMENTAL DATA:

- 1 TEMPERATURE RANGE: -55°C ~ +125°C
- 2 2011/65/EU(RoHS) AND 2015/863/(RoHS): COMPLIANT
- 3 1907/2006/EC(REACH): COMPLIANT

REVISIONS			
REV.	DESCRIPTION	DATE	APPROVED
A	INITIAL RELEASE	11/19/21	J. QU



RECOMMENDED MOUNTING HOLE



DRAWN	XB. YANG	DATE	11/19/21
CHECKED	W. YANG	DATE	11/19/21
APPROVED	J. QU	DATE	11/19/21
UNLESS OTHERWISE SPECIFIED DIMENSIONS ARE IN MILLIMETERS, DIMENSIONS IN [] ARE IN INCHES FOR CUSTOMER REFERENCE ONLY UNLESS OTHERWISE SPECIFIED TOLERANCE ARE:		THESE DRAWINGS AND SPECIFICATIONS ARE THE PROPERTY OF ANOISON ELECTRONICS LTD AND SHOULD NOT BE USED WITHOUT WRITTEN PERMISSION COPYRIGHT © 2021 ANOISON ELECTRONICS LTD	
.XX	±0.13 [005"]		
.X	±0.20 [008"]		
X	±0.50 [019"]		
.X°	±1°		
X°	±2°		



TITLE
PRECISION ADAPTER
SMA FEMALE TO SMA FEMALE BULKHEAD

VIEW	PART NO. PA2121EC		
	SIZE A3	SCALE 5:1	SHEET 1/1
			REV. A