

4

3

2

1

MATERIAL & FINISH:

- 1 BODY: STAINLESS STEEL, PASSIVATED
- 2 CENTER CONTACT: BERYLLIUM COPPER ALLOY, GOLD PLATED
- 3 INSULATOR: PTFE & PEI
- 4 LOCK WASHER: BERYLLIUM COPPER ALLOY, GOLD PLATED
- 5 FASTENING NUT: BRASS, GOLD PLATED

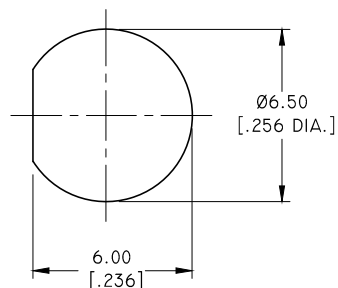
ELECTRICAL DATA:

- 1 IMPEDANCE: 50 Ω
- 2 FREQUENCY RANGE: DC~27 GHz
- 3 VSWR: 1.10 MAX. DC-18GHz
1.15 MAX. 18GHz-27GHz

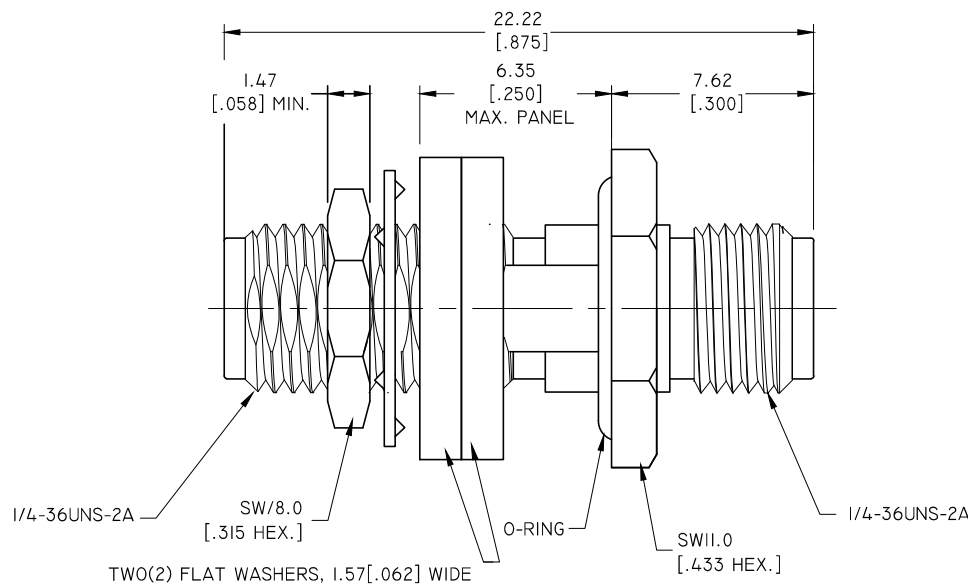
ENVIRONMENTAL DATA:

- 1 TEMPERATURE RANGE: -55°C~+165°C
- 2 2011/65/EU (RoHS): COMPLIANT

REVISIONS			
REV.	DESCRIPTION	DATE	APPROVED
A	INITIAL RELEASE	09/06/18	J. QU



RECOMMENDED MOUNTING HOLE



TWO(2) FLAT WASHERS, 1.57[.062] WIDE
 FOR PANELS .063-.140 THK, USE TWO(2) FLAT WASHERS
 FOR PANELS .140-.215 THK, USE ONE(1) FLAT WASHER
 FOR PANELS .215-.250 THK, USE ZERO(0) FLAT WASHERS

DRAWN	W. YANG	DATE	09/06/18
CHECKED	X. B. YANG	DATE	09/06/18
APPROVED	J. QU	DATE	09/06/18
UNLESS OTHERWISE SPECIFIED DIMENSIONS ARE IN MILLINMETERS. DIMENSIONS IN [] ARE IN INCHES FOR CUSTOMER REFERENCE ONLY UNLESS OTHERWISE SPECIFIED TOLERANCE ARE:		THESE DRAWINGS AND SPECIFICATIONS ARE THE PROPERTY OF ANOISON ELECTRONICS LTD AND SHOULD NOT BE USED WITHOUT WRITTEN PERMISSION COPYRIGHT © 2018 ANOISON ELECTRONICS LTD	
.XX	±0.13 [0.005"]		
.X	±0.20 [0.008"]		
X	±0.50 [0.019"]		
.X°	±1°		
X°	±2°		



TITLE PRECISION ADAPTER SMA FEMALE TO SMA FEMALE BULKHEAD			
VIEW	PART NO. PA212IEB		
SIZE A3	SCALE 5:1	SHEET 1/1	REV. A

4

3

2

1