

4

3

2

1

ELECTRICAL DATA:

- 1 IMPEDANCE: 50 OHMS
- 2 FREQUENCY RANGE: DC~3 GHZ

D

D

C

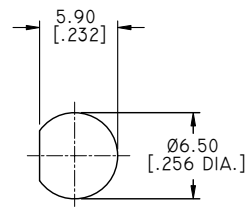
C

B

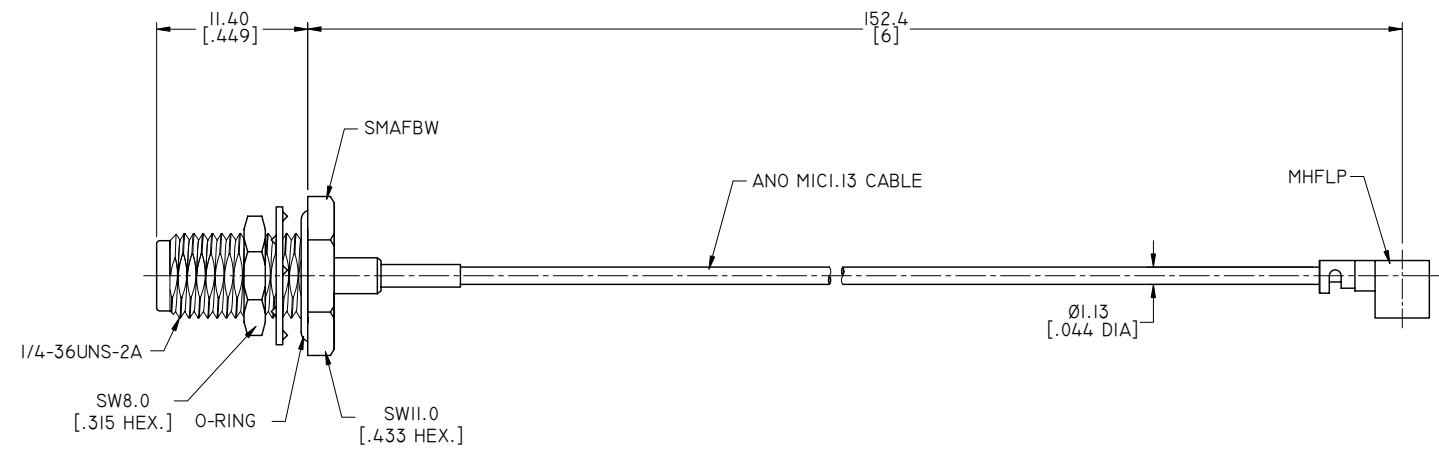
B

A

A



RECOMMENDED MOUNTING HOLE



TITLE
 CABLE ASSEMBLY, SMA STRAIGHT FEMALE BULKHEAD
 WATERPROOF TO MHF RIGHT ANGLE PLUG
 ANO MICI.13 CABLE, 6 INCHES

- NOTES:
- 1. UNLESS OTHERWISE SPECIFIED ALL DIMENSIONS ARE NOMINAL.
 - 2. ALL SPECIFICATIONS ARE SUBJECT TO CHANGED WITHOUT NOTICE AT ANY TIME.
 - 3. DIMENSIONS ARE IN MILLIMETERS, DIMENSIONS IN [] ARE IN INCHES
 - 4. LENGTH TOLERANCE IS ±2%.

VIEW	PART NO. MICI13-SMAFBW-MHFLP-6			
	SIZE A3	SCALE 2.5:1	SHEET 1/1	REV. A

4

3

2

1