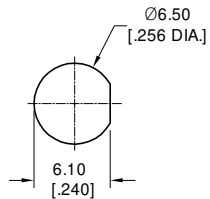
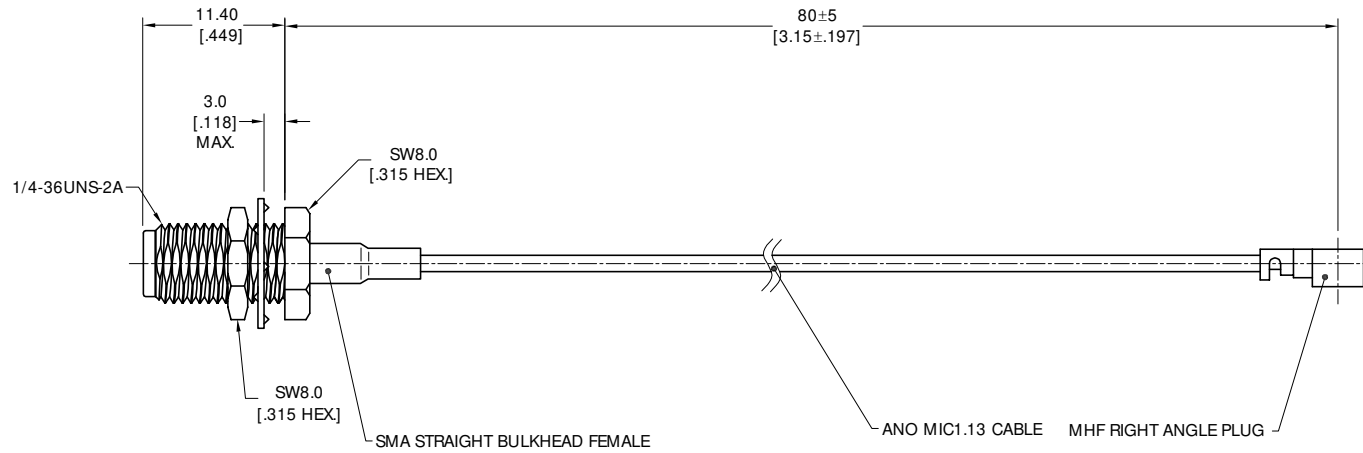


**ELECTRICAL DATA:**

1. IMPEDANCE: 50 Ω
2. FREQUENCY RANGE: DC-5 GHz
3. VSWR: 1.35 MAX.
4. INSERTION LOSS: 0.50 MAX.

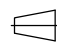



RECOMMENDED MOUNTING HOLE

- NOTES:
1. UNLESS OTHERWISE SPECIFIED ALL DIMENSIONS ARE NOMINAL.
  2. ALL SPECIFICATIONS ARE SUBJECT TO CHANGED WITHOUT NOTICE AT ANY TIME
  3. DIMENSIONS ARE IN MILLIMETERS, DIMENSIONS IN [ ] ARE IN INCHES
  4. LENGTH TOLERANCE IS ±2%.



TITLE  
 CABLE ASSEMBLY, SMA STRAIGHT BULKHEAD FEMALE TO  
 MHF RIGHT ANGLE PLUG, ANO MIC1.13 CABLE, 80MM

VIEW	PART NO. MIC113-SMAFB-MHF-80			
 	SIZE A3	SCALE 2.5:1	SHEET 1/1	REV. A