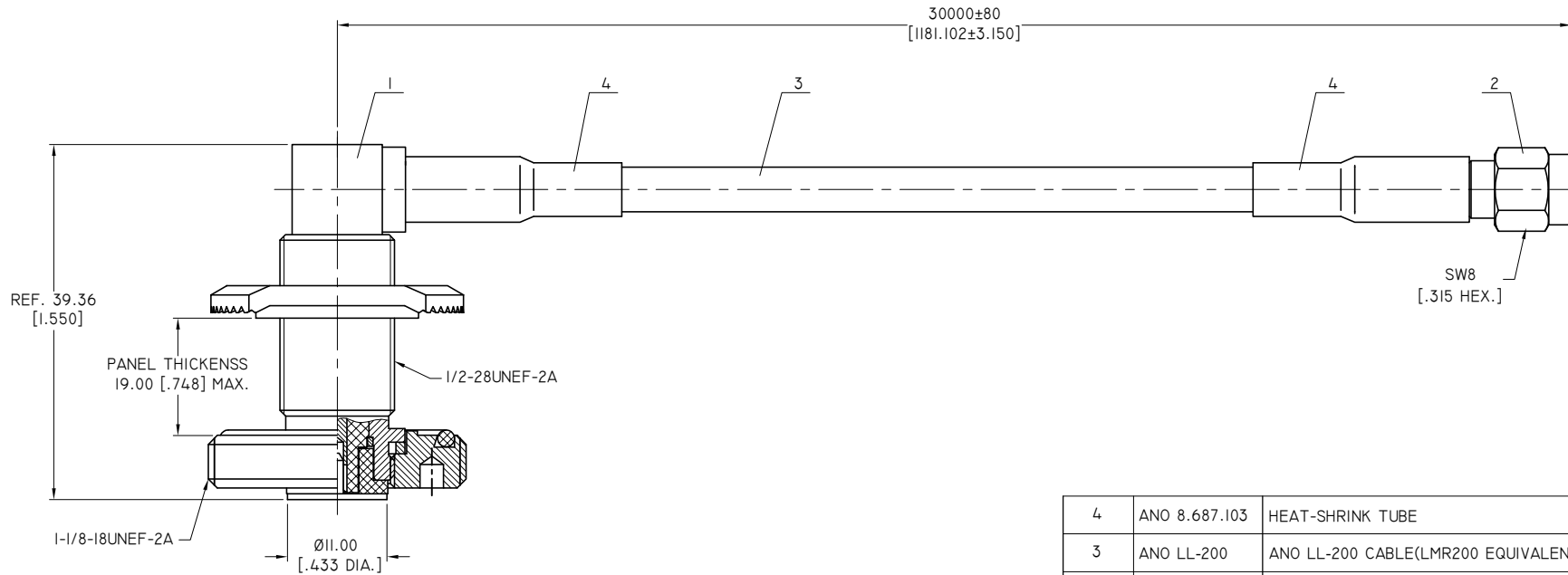


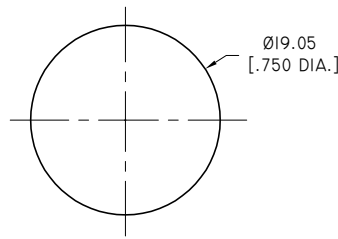
**ELECTRICAL SPECIFICATIONS:**

- 1 IMPEDANCE: 50 Ω
- 2 WITHSTAND VOLTAGE: 1000 V

REVISIONS			
REV.	DESCRIPTION	DATE	APPROVED
A	INITIAL RELEASE	10/10/19	J. QU



REF. 39.36 [1.550]  
 PANEL THICKENSS 19.00 [.748] MAX.  
 1/2-28UNEF-2A  
 1-1/8-18UNEF-2A  
 Ø11.00 [.433 DIA.]



RECOMMENDED MOUNTING HOLE

SEQUENCE NUMBER	PART NO.	DESCRIPTION	QTY
4	ANO 8.687.103	HEAT-SHRINK TUBE	2
3	ANO LL-200	ANO LL-200 CABLE(LMR200 EQUIVALENT)	1
2	ANO 2111-2294	SMA STRAIGHT MALE CRIMP FOR LMR200 CABLE	1
1	ANO 5521-2003	NMO RIGHT ANGLE MALE CRIMP FOR LMR200 CABLE	1

DRAWN	X. B. YANG	DATE	10/10/19
CHECKED	W. YANG	DATE	10/10/19
APPROVED	J. QU	DATE	10/10/19
UNLESS OTHERWISE SPECIFIED DIMENSIONS ARE IN MILLIMETERS. DIMENSIONS IN [ ] ARE IN INCHES FOR CUSTOMER REFERENCE ONLY UNLESS OTHERWISE SPECIFIED TOLERANCE ARE:		THESE DRAWINGS AND SPECIFICATIONS ARE THE PROPERTY OF ANOISON ELECTRONICS LTD AND SHOULD NOT BE USED WITHOUT WRITTEN PERMISSION COPYRIGHT © 2019 ANOISON ELECTRONICS LTD	
.XX	±0.13 [.005"]		
.X	±0.20 [.008"]		
.X°	±0.50 [.019"]		
X°	±1°		

**TITLE**  
 CABLE ASSEMBLY, NMO RIGHT ANGLE MALE TO SMA STRAIGHT MALE, ANO LL-200 CABLE, 30 METERS

**VIEW**

**PART NO.**  
 LL200-NMOLM-SMAM-30M

SIZE	A3	SCALE	2:1	SHEET	1/1	REV.	A
------	----	-------	-----	-------	-----	------	---

D  
C  
B  
A

D  
C  
B  
A

4 3 2 1

4 3 2 1