

4

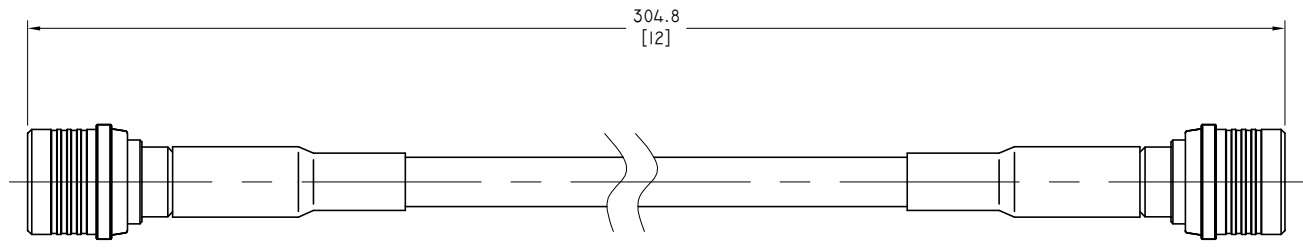
3

2

1

**ELECTRICAL DATA:**

- 1 IMPEDANCE: 50 OHMS
- 2 FREQUENCY RANGE: DC~6 GHZ
- 3 VSWR:  $\leq 1.30$  AT DC~3GHZ  
 $\leq 1.50$  AT 3~6GHZ
- 4 INSERTION LOSS:  $\leq 1.00$  DB AT DC~3 GHZ  
 $\leq 1.30$  DB AT 3~6 GHZ



QMAM

QMAM



TITLE  
 CABLE ASSEMBLY, QMA STRAIGHT MALE TO QMA STRAIGHT MALE LL195 CABLE, 12 INCHS

NOTES:  
 1. UNLESS OTHERWISE SPECIFIED ALL DIMENSIONS ARE NOMINAL.  
 2. ALL SPECIFICATIONS ARE SUBJECT TO CHANGED WITHOUT NOTICE AT ANY TIME.  
 3. DIMENSIONS ARE IN MILLINMETERS, DIMENSIONS IN [ ] ARE IN INCHES  
 4. LENGTH TOLERANCE IS  $\pm 1.5\%$ .

VIEW	PART NO.		
	LL195-QMAM-QMAM-12		
SIZE A3	SCALE 2:1	SHEET 1/1	REV. A

4

3

2

1