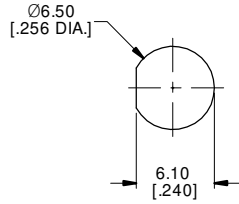
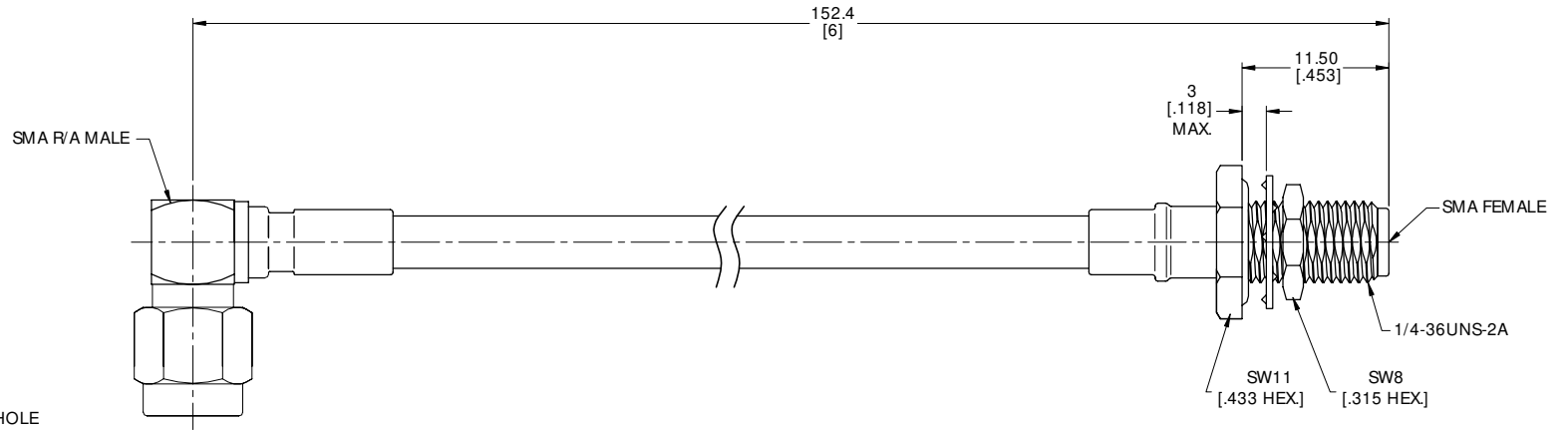


ELECTRICAL DATA:

- 1 IMPEDANCE: 50 Ω
- 2 FREQUENCY RANGE: DC~12 GHz

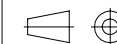


RECOMMENDED MOUNTING HOLE



TITLE  
CABLE ASSEMBLY, SMA R/A MALE TO SMA STRAIGHT FEMALE  
BULKHEAD WATERPROOF, ANO HF141FEP CBALE

VIEW



PART NO.

HF141FEP-SMALM-SMAFB-6

SIZE	SCALE	SHEET	REV.
A3	2.5:1	1/1	A

NOTES:

- 1. UNLESS OTHERWISE SPECIFIED ALL DIMENSIONS ARE NOMINAL.
- 2. ALL SPECIFICATIONS ARE SUBJECT TO CHANGED WITHOUT NOTICE AT ANY TIME.
- 3. DIMENSIONS ARE IN MILLINMETERS, DIMENSIONS IN [ ] ARE IN INCHES
- 4. LENGTH TOLERANCE IS ±2%.