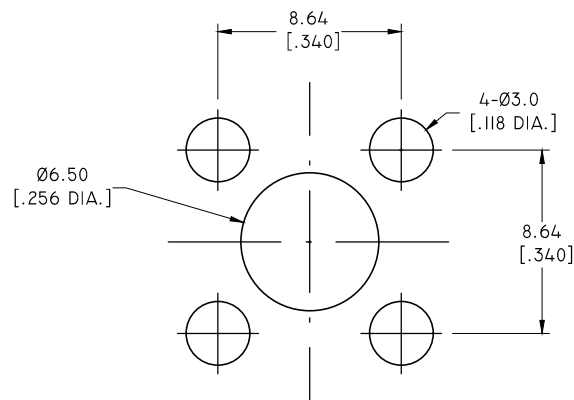
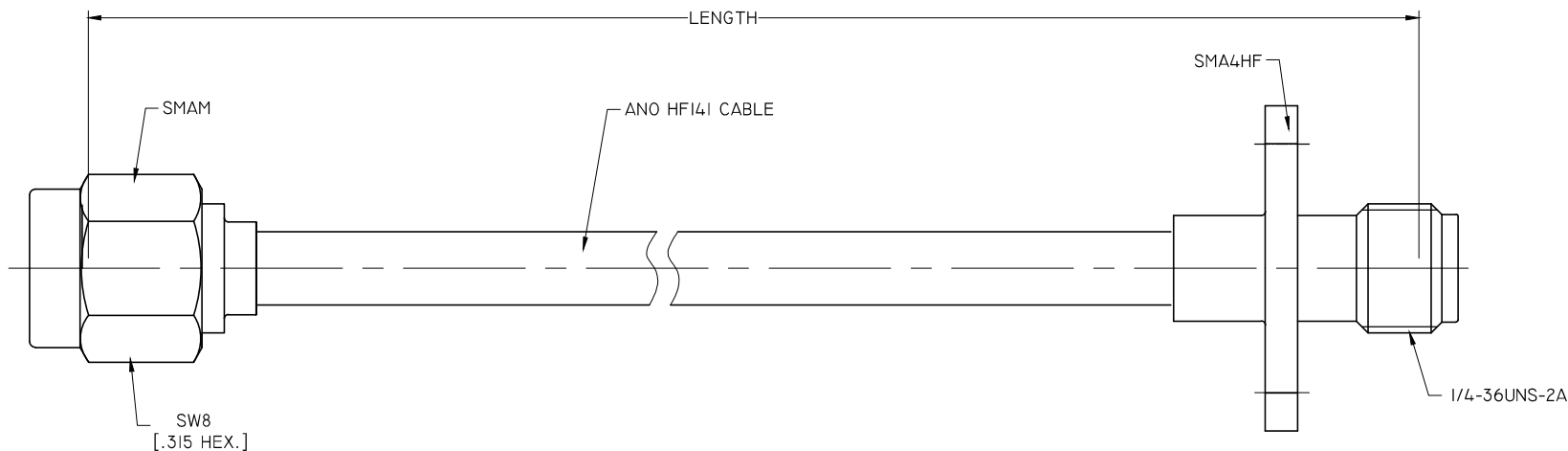


ELECTRICAL DATA:

- 1 IMPEDANCE: 50 OHMS
- 2 FREQUENCY RANGE: DC~18 GHZ



RECOMMENDED MOUNTING HOLE

PART NO.	LENGTH
HF14I-SMAM-SMA4HF-10	254 [10]
HF14I-SMAM-SMA4HF-14	355.6 [14]
HF14I-SMAM-SMA4HF-XX	CUSTOM LENGTH IN INCHES



TITLE
 CABLE ASSEMBLY, SMA STRAIGHT MALE TO SMA STRAIGHT FEMALE FLANGE 4 HOLE , ANO HF14I CABLE

- NOTES:
 1. UNLESS OTHERWISE SPECIFIED ALL DIMENSIONS ARE NOMINAL.
 2. ALL SPECIFICATIONS ARE SUBJECT TO CHANGED WITHOUT NOTICE AT ANY TIME.
 3. DIMENSIONS ARE IN MILLINMETERS, DIMENSIONS IN [] ARE IN INCHES
 4. LENGTH TOLERANCE IS ±1.5%.

VIEW 	PART NO. HF14I-SMAM-SMA4HF-XX			
	SIZE A3	SCALE 4:1	SHEET 1/1	REV. A