

4

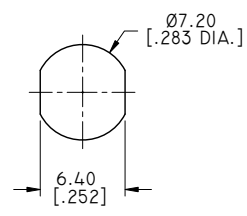
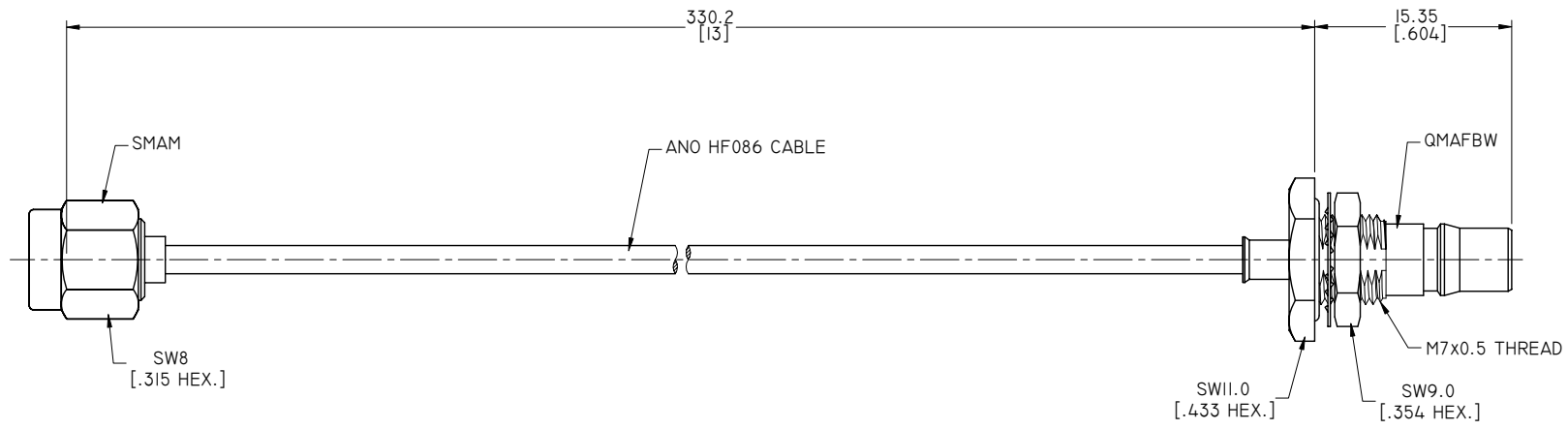
3

2

1

ELECTRICAL DATA:

- 1 IMPEDANCE: 50 OHMS
- 2 FREQUENCY RANGE: DC~6 GHZ



RECOMMENDED MOUNTING HOLE



TITLE  
 CABLE ASSEMBLY, SMA STRAIGHT MALE TO QMA STRAIGHT FEMALE BULKHEAD WATERPROOF, ANO HF086 CABLE, 13 INCHES

- NOTES:  
 1. UNLESS OTHERWISE SPECIFIED ALL DIMENSIONS ARE NOMINAL.  
 2. ALL SPECIFICATIONS ARE SUBJECT TO CHANGED WITHOUT NOTICE AT ANY TIME.  
 3. DIMENSIONS ARE IN MILLIMETERS, DIMENSIONS IN [ ] ARE IN INCHES  
 4. LENGTH TOLERANCE IS ±2%.

|      |  |                                  |                |              |
|------|--|----------------------------------|----------------|--------------|
| VIEW |  | PART NO.<br>HF086-SMAM-QMAFBW-I3 |                |              |
|      |  | SIZE<br>A3                       | SCALE<br>2.5:1 | SHEET<br>1/1 |
|      |  | REV.<br>A                        |                |              |

4

3

2

1

D

D

C

C

B

B

A

A