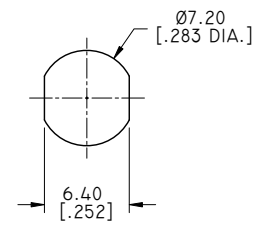
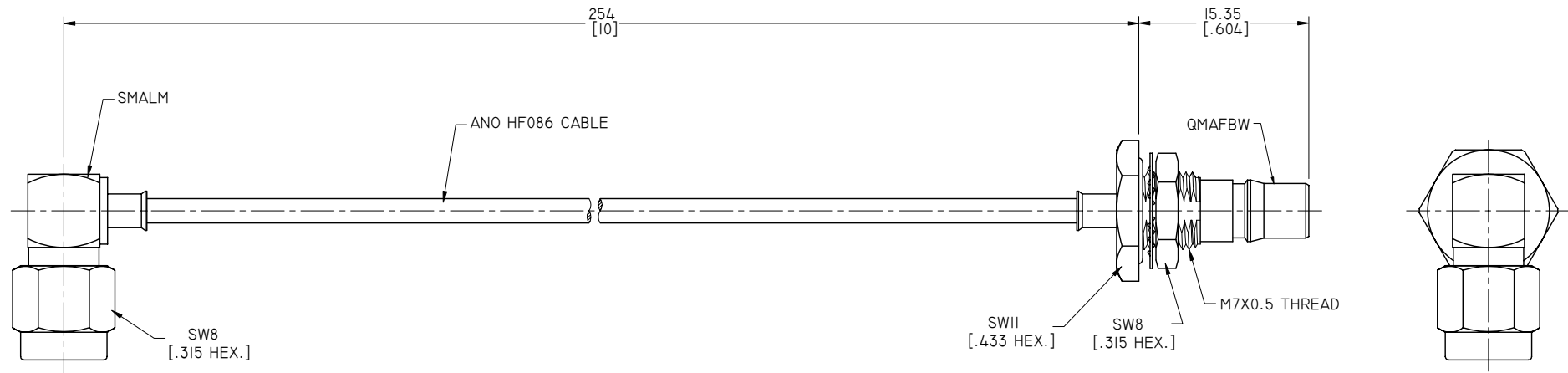


ELECTRICAL DATA:

- 1 IMPEDANCE: 50 OHMS
- 2 FREQUENCY RANGE: DC~6 GHZ



RECOMMENDED MOUNTING HOLE



TITLE
 CABLE ASSEMBLY, SMA RIGHT ANGLE MALE TO
 QMA STRAIGHT BULKHEAD WATERPROOF FEMALE
 ANO HF086 CABLE, 10 INCHES

NOTES:
 1. UNLESS OTHERWISE SPECIFIED ALL DIMENSIONS ARE NOMINAL.
 2. ALL SPECIFICATIONS ARE SUBJECT TO CHANGED WITHOUT NOTICE AT ANY TIME.
 3. DIMENSIONS ARE IN MILLINMETERS, DIMENSIONS IN [] ARE IN INCHES
 4. LENGTH TOLERANCE IS ±2%.

VIEW	PART NO. HF086-SMALM-QMAFBW-10		
	SIZE A3	SCALE 4:1	SHEET 1/1
			REV. A