

4

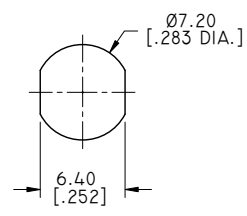
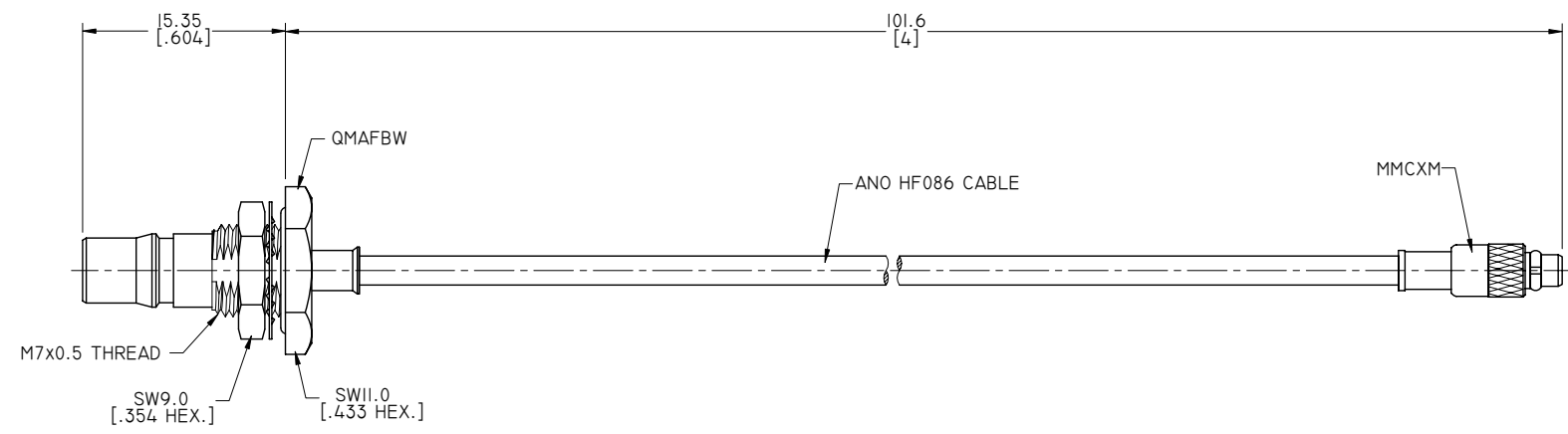
3

2

1

ELECTRICAL DATA:

- 1 IMPEDANCE: 50 OHMS
- 2 FREQUENCY RANGE: DC~6 GHZ

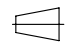


RECOMMENDED MOUNTING HOLE



TITLE
 CABLE ASSEMBLY, QMA STRAIGHT FEMALE BULKHEAD WATERPROOF TO MMCX STRAIGHT MALE, ANO HF086 CABLE, 4 INCHES

- NOTES:
 1. UNLESS OTHERWISE SPECIFIED ALL DIMENSIONS ARE NOMINAL.
 2. ALL SPECIFICATIONS ARE SUBJECT TO CHANGED WITHOUT NOTICE AT ANY TIME.
 3. DIMENSIONS ARE IN MILLIMETERS, DIMENSIONS IN [] ARE IN INCHES
 4. LENGTH TOLERANCE IS ±2%.

VIEW	PART NO. HF086-MAFBW-MMCXM-4		
 	SIZE A3	SCALE 2.5:1	SHEET 1/1
			REV. A

4

3

2

1