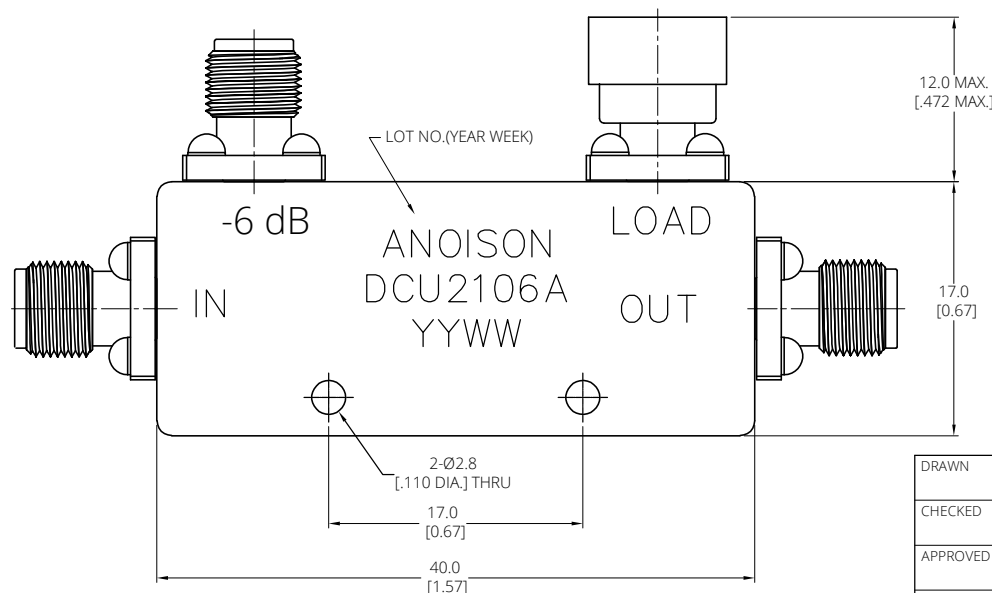


ELECTRICAL DATA	
FREQUENCY RANGE	2-18 GHz
IMPEDANCE: 50 Ω	50 Ω
VSWR	≤ 1.50
INSERTION LOSS	≤ 0.74 dB (Excluding Coupling Loss 1.26 dB)
COUPLING SENSITIVITY	≤ ± 0.7 dB
COUPLING FACTOR	6 dB ± 0.7 dB
DIRECTIVITY	≥ 15 dB
POWER	20 W MAX.

MATERIAL AND FINISH	
CONNECTOR(SMA FEMALE)	STAINLESS STEEL, PASSIVATED
HOUSING	6061 ALUMINUM ALLOY, PAINTED, BLACK COLOR

ENVIRONMENTAL DATA	
TEMPERATURE RANGE	-40°C TO +80°C
RoHS COMPLIANT	2011/65/EU(RoHS) AND 2015/863/(RoHS)
REACH COMPLIANT	1907/2006/EC(REACH)
NET WEIGHT	0.035 Kg

REVISIONS			
REV.	DESCRIPTION	DATE	APPROVED
A	INITIAL RELEASE	12/01/23	J. Q
B	CHANGE TITLE FROM DC2106 TO DCU2106A	12/08/25	J. Q



DRAWN	Y. H	DATE	12/08/25
CHECKED	W. Y	DATE	12/08/25
APPROVED	J. Q	DATE	12/08/25
UNLESS OTHERWISE SPECIFIED DIMENSIONS ARE IN MILLIMETERS, DIMENSIONS IN [] ARE IN INCHES FOR CUSTOMER REFERENCE ONLY UNLESS OTHERWISE SPECIFIED TOLERANCE ARE:		THESE DRAWINGS AND SPECIFICATIONS ARE THE PROPERTY OF ANOISON ELECTRONICS LTD AND SHOULD NOT BE USED WITHOUT WRITTEN PERMISSION COPYRIGHT © 2025 ANOISON ELECTRONICS LTD	
XX	±0.13 [0.005"]		
X	±0.30 [118"]		
X	±0.50 [019"]		
X*	±1°		
X*	±2°		



TITLE			
2-18GHz SMA 6 dB DIRECTIONAL COUPLER			
VIEW		PART NO.	
		DCU2106A	
SIZE	SCALE	SHEET	REV.
A3	3:1	1/1	B