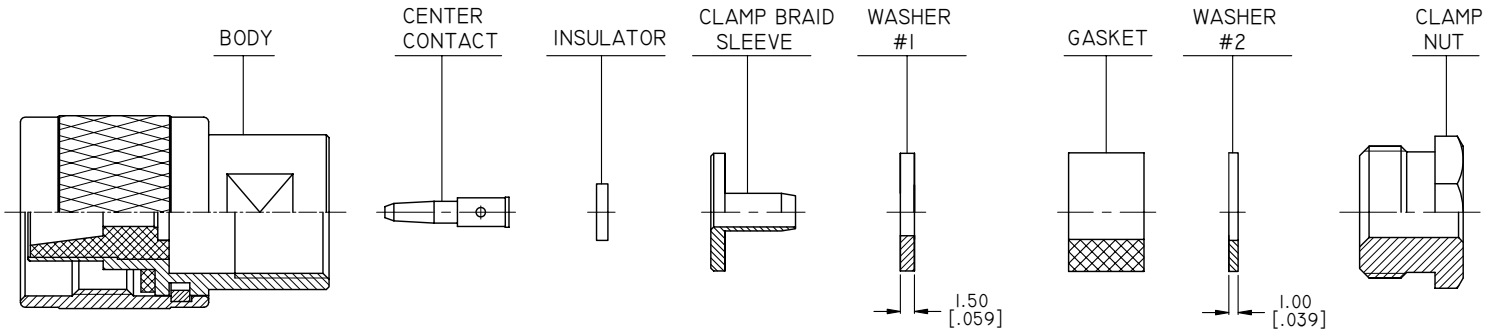
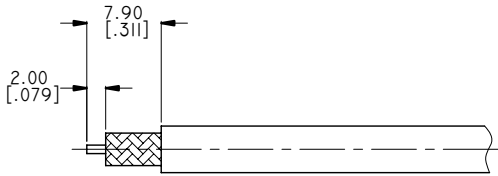


SC STRAIGHT MALE CLAMP/SOLDER ATTACHMENT FOR RG58/LMRI95 CABLE



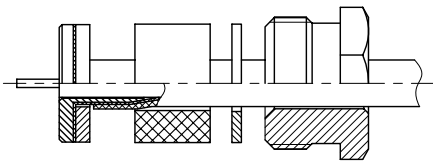
CONNECTOR	ANO 5911-2009
-----------	---------------

1



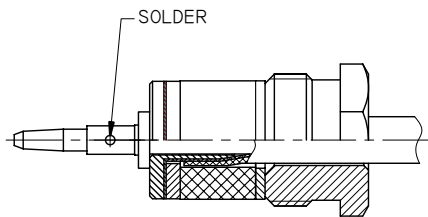
1.1 STRIP THE CABLE ACCORDING TO THE DIMENSIONS, AS SHOWN.

2



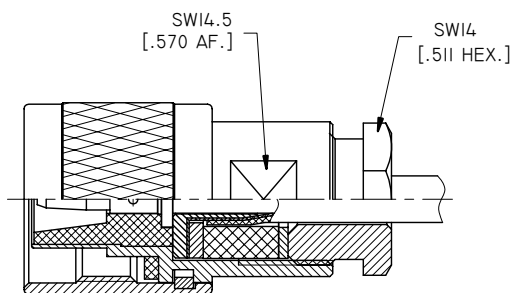
- 2.1 SLIDE THE CLAMP NUT, WASHER #2 AND GASKET ONTO THE CABLE.
- 2.2 SLIDE WASHER #1 OVER THE BRAID.
- 2.3 SLIDE CLAMP BRAID SLEEVE UNDER BRAID.
- 2.4 FOLD BACK BRAID AND TRIM OFF EXCESS OF BRAID.

3



3.1 SOLDER THE CABLE INNER CONDUCTOR INTO CENTER CONTACT.

4



4.1 SCREW SUB-ASSEMBLY INTO THE CONNECTOR BODY. (RECOMMENDED COUPLING TORQUE 12 IN.LB - 1.36 NM).