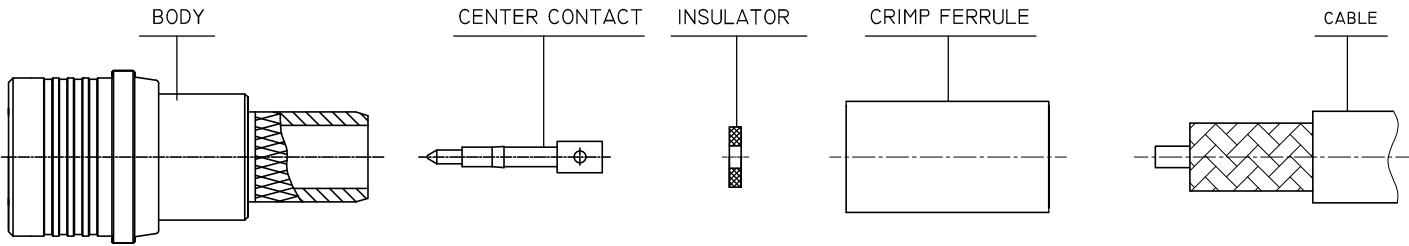
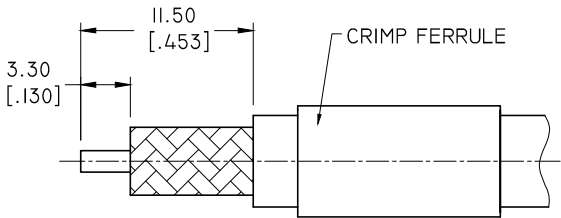


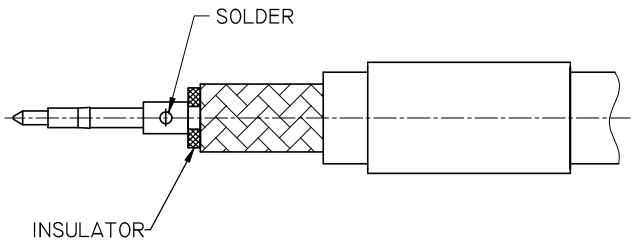
QMA STRAIGHT MALE SOLDER FOR LMR240 CABLE



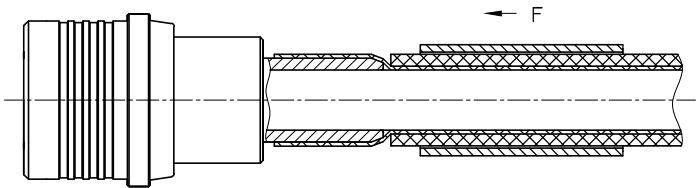
1



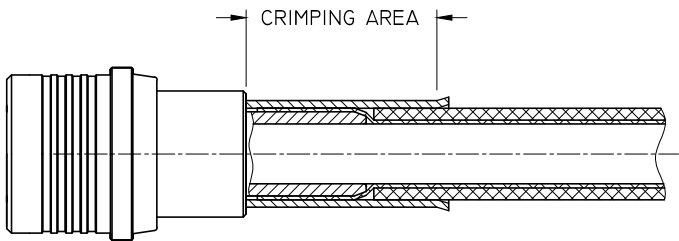
2



3



4



CONNECTOR ANO 2611-2010

- 1.1 STRIP THE CABLE.
- 1.2 SLIDE THE CABLE ONTO THE CABLE.

- 2.1 SOLDER OR CRIMP CENTER CONTACT. (CRIMP TOOL BOARD)

- 3.1 FAN THE BRAID.
- 3.2 SLIDE CABLE THE BODY UNDER THE BRAID.
- 3.3 SLIDE THE FERRULE OVER THE BRAID IN DERECTION F.

- 4.1 CRIMP THE FERRULE WITH CRIMPING TOOL. (CRIMP TOOL BOARD)
- 4.2 CUT THE EXCESS OF BRAID.