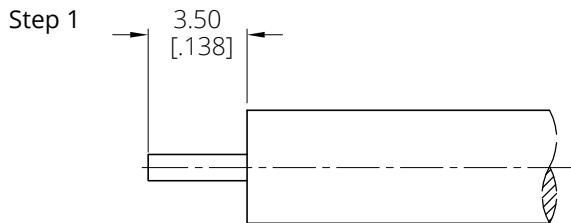
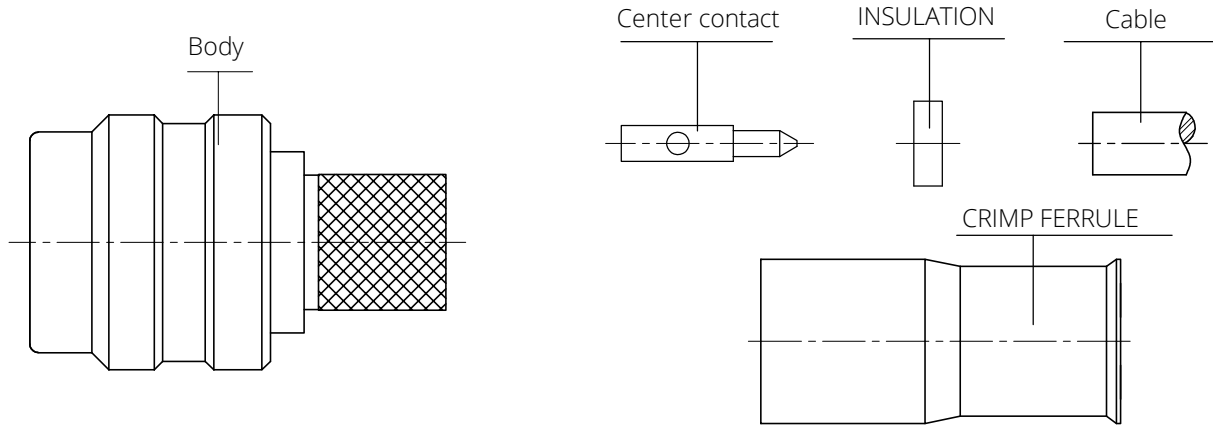
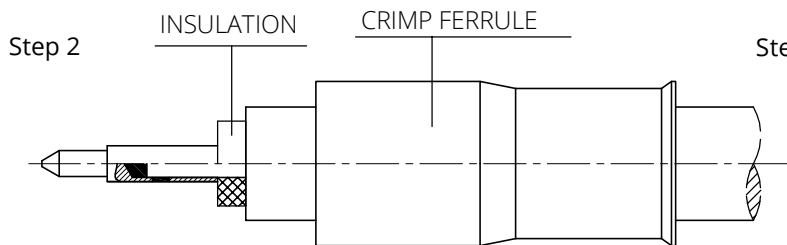


P/N: ANO 2111-2513

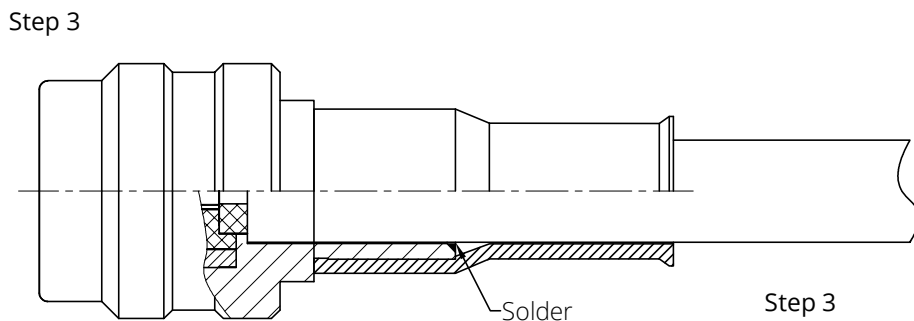
Description: PUSH-ON SMA straight male solder for .141 Cable



Step 1  
a. Strip the cable according to the dimensions as shown.



Step 2  
Solder the center contact onto the conductor.  
Slide crimp ferrule onto the cable.



Step 3  
a. Push cable assembly into body until it bottoms as shown.  
b. Solder the body onto the cable.  
c. Crimp the ferrule with crimping tool.