

**MATERIAL & FINISH:**

- 1 BODY: SEE TABLE
- 2 CENTER CONTACT: BERYLLIUM COPPER ALLOY, GOLD PLATED
- 3 INSULATOR: PTFE
- 4 FASTENING NUT: SEE TABLE
- 5 LOCK WASHER: SEE TABLE

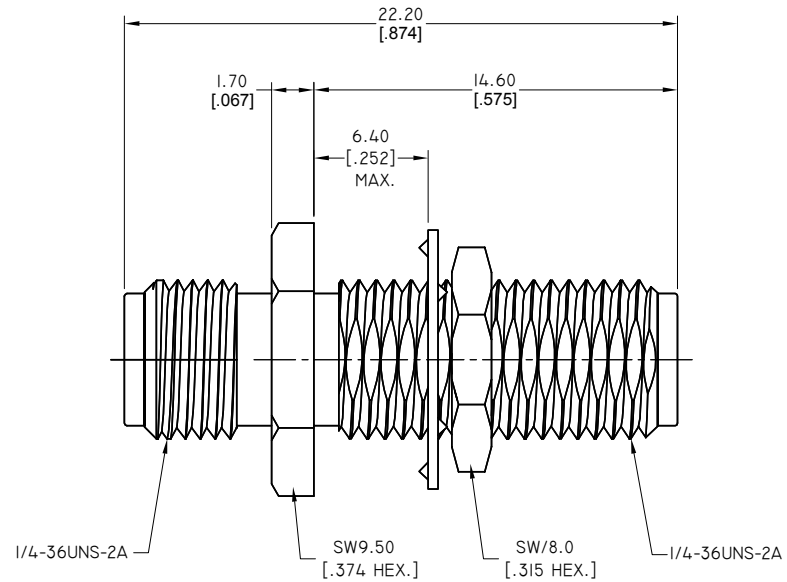
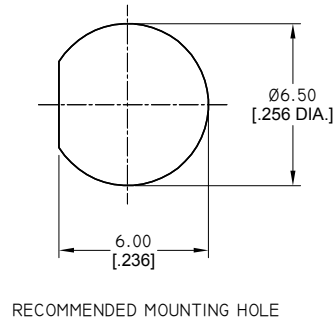
**ENVIRONMENTAL DATA:**

- 1 TEMPERATURE RANGE: -55 °C~+125 °C
- 2 2011/65/EU (RoHS): COMPLIANT

**ELECTRICAL DATA:**

- 1 IMPEDANCE: 50 Ω
- 2 FREQUENCY RANGE: DC~26.5 GHz
- 3 VSWR: 1.20 MAX. @ DC~18 GHz  
1.30 MAX. @ 18~26.5GHz
- 4 INSERTION LOSS: ≤0.036√F(GHz) DB

REVISIONS			
REV.	DESCRIPTION	DATE	APPROVED
C	CHANGED FREQUENCY RANGE	09/06/18	J. QU
D	ADDED INSERTION LOSS	07/05/22	J. QU



TABLE

PART NO.	PART	MATERIAL	FINISH
ANO 212-212-1004	BODY/FASTENING NUT	BRASS	GOLD
	LOCK WASHER	BERYLLIUM COPPER ALLOY	
ANO 212-212-1004-1	BODY/FASTENING NUT	BRASS	ALBALOY
	LOCK WASHER	BERYLLIUM COPPER ALLOY	
ANO 212-212-1004-2	BODY/FASTENING NUT	STAINLESS STEEL	PASSIVATED
	LOCK WASHER		

DRAWN	P. CHEN	DATE	07/05/22
CHECKED	L. YANG	DATE	07/05/22
APPROVED	J. QU	DATE	07/05/22
UNLESS OTHERWISE SPECIFIED DIMENSIONS ARE IN MILLINETERS, DIMENSIONS IN [ ] ARE IN INCHES FOR CUSTOMER REFERENCE ONLY UNLESS OTHERWISE SPECIFIED TOLERANCE ARE:		THESE DRAWINGS AND SPECIFICATIONS ARE THE PROPERTY OF ANOISON ELECTRONICS LTD AND SHOULD NOT BE USED WITHOUT WRITTEN PERMISSION COPYRIGHT © 2022 ANOISON ELECTRONICS LTD	
.XX	±0.13 [0.005"]		
.X	±0.20 [0.008"]		
X	±0.50 [0.019"]		
.X°	±1°		
X°	±2°		



TITLE			
ADAPTER, SMA FEMALE BULKHEAD TO SMA FEMALE			
VIEW	PART NO.		
	ANO 212-212-1004		
SIZE	SCALE	SHEET	REV.
A3	5:1	1/1	D