

4

3

2

1

MATERIAL & FINISH:

SMA CONNECTOR:

- 1 BODY: BRASS, GOLD PLATED
- 2 CENTER CONTACT: BERYLLIUM COPPER, GOLD PLATED
- 3 INSULATOR: PTFE

WR90:

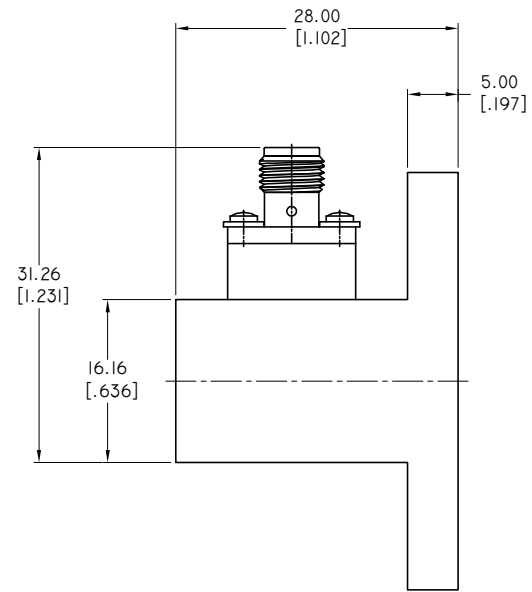
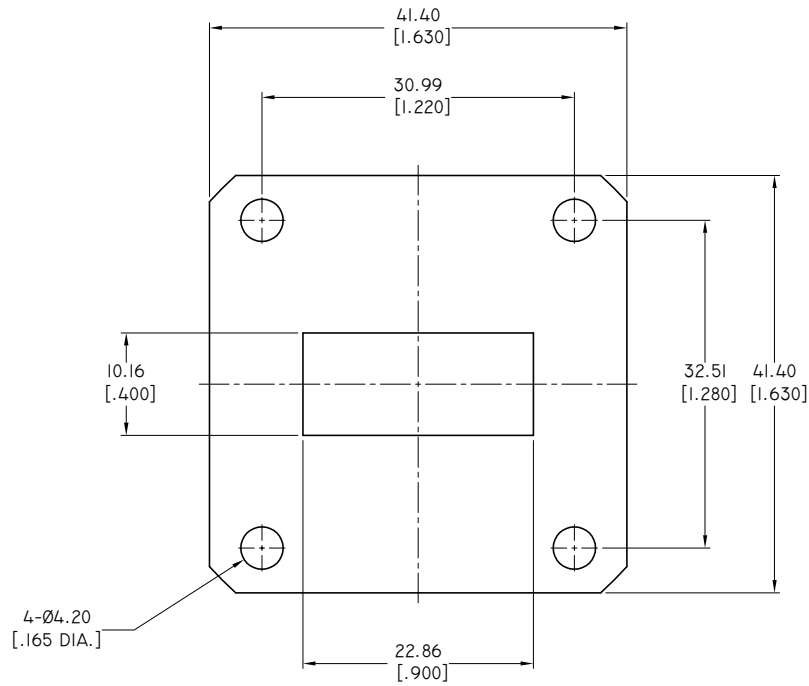
- 1 CAVITY: ALUMINIUM ALLOY

ELECTRICAL DATA:

- 1 IMPEDANCE: 50 Ω
- 2 FREQUENCY RANGE: 8.2-12.5 GHZ
- 3 VSWR: 1.25 MAX.

REVISIONS

REV.	DESCRIPTION	DATE	APPROVED
A	INITIAL RELEASE	03/09/20	J. QU



D

C

B

A

D

C

B

A

DRAWN	W. YANG	DATE	03/09/20
CHECKED	L. YANG	DATE	03/09/20
APPROVED	J. QU	DATE	03/09/20
UNLESS OTHERWISE SPECIFIED DIMENSIONS ARE IN MILLIMETERS, DIMENSIONS IN [] ARE IN INCHES FOR CUSTOMER REFERENCE ONLY UNLESS OTHERWISE SPECIFIED TOLERANCE ARE:		THESE DRAWINGS AND SPECIFICATIONS ARE THE PROPERTY OF ANOISON ELECTRONICS LTD AND SHOULD NOT BE USED WITHOUT WRITTEN PERMISSION COPYRIGHT © 2020 ANOISON ELECTRONICS LTD	
.XX	+0.13 [.005"]		
.X	+0.25 [.010"]		
X	+0.50 [.019"]		
.X°	±1°		
X°	±2°		



TITLE
WR90 WAVEGUIDE TO COAXIAL SMA RIGHT ANGLE ADAPTERS

VIEW	PART NO. ANO WR90-SMA-01		
	SIZE A3	SCALE 5:1	SHEET 1/1
	REV. A		

4

3

2

1