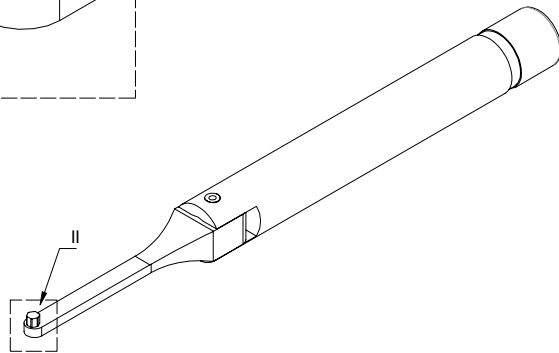
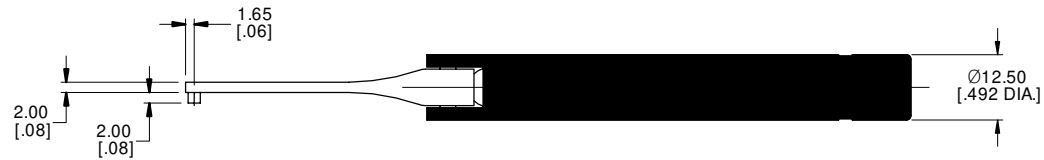
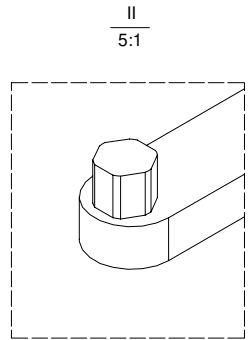
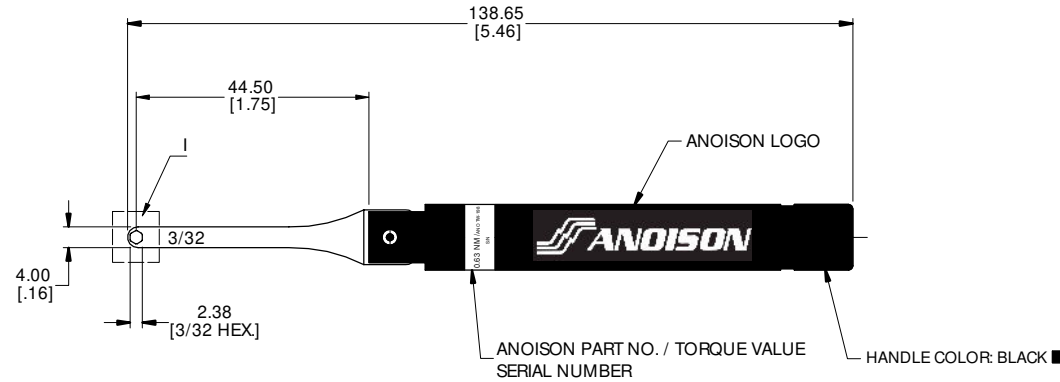
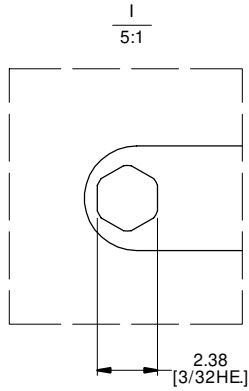


MATERIAL & FINISH:

- 1 HEAD: STAINLESS STEEL, PASSIVATED
- 2 HANDLE: ALUMINUM, OXIDATION
- 3 SPRING: MANGANESE ALLOY
- 4 STEEL BALL: STAINLESS STEEL, PASSIVATED
- 5 SPRING PIN: STAINLESS STEEL, PASSIVATED
- 6 OTHER METAL: STAINLESS STEEL, PASSIVATED

REVISIONS			
REV.	DESCRIPTION	DATE	APPROVED
A	INITIAL RELEASE	03/26/26	J Q



- 1. TORQUE VALUE: 0.63±0.025NM [5.6±0.224 IN.LBS]
- 2. SIZE: 2.38 MM [3/32 IN.]
- 3. PRINT CONTENT ON HANDLE(WHITE COLOR): ANOISON LOGO

DRAWN	X. Y	DATE	03/26/26
CHECKED	W. Y	DATE	03/26/26
APPROVED	J Q	DATE	03/26/26
UNLESS OTHERWISE SPECIFIED DIMENSIONS ARE IN MILLIMETERS, DIMENSIONS IN [] ARE IN INCHES FOR CUSTOMER REFERENCE ONLY UNLESS OTHERWISE SPECIFIED TOLERANCE ARE:		THESE DRAWINGS AND SPECIFICATIONS ARE THE PROPERTY OF ANOISON GROUP. THEY SHALL NOT BE REPRODUCED OR USED WITHOUT WRITTEN PERMISSION. © 2026 ANOISON GROUP. ALL RIGHTS RESERVED.	
XX	±0.13 [005"]		
X	±0.20 [008"]		
X	±0.50 [019"]		
X°	±1°		
X°	±2°		



TITLE			
TORQUE WRENCH FOR 4-40 SCREW PRESET TORQUE= 0.63±0.025NM [5.6±0.224 IN.LBS] HEX SIZE 2.38 MM [3/32 IN.]			
VIEW		PART NO.	
ANO TW-198		ANO TW-198	
SIZE	SCALE	SHEET	REV.
A3	1:1	1/1	A