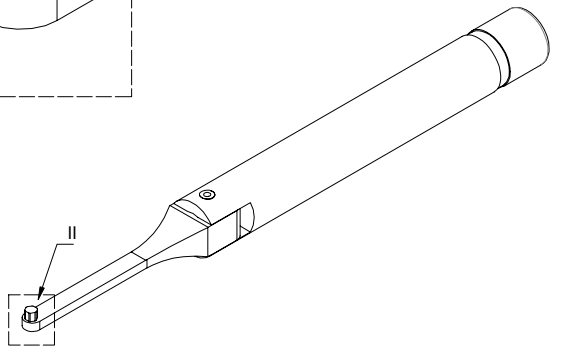
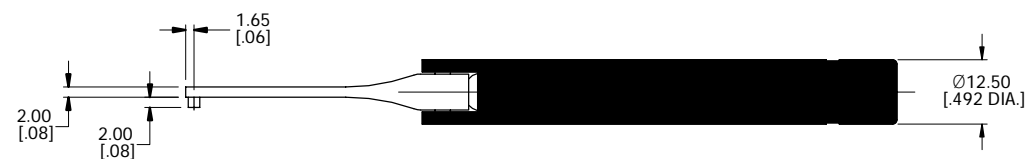
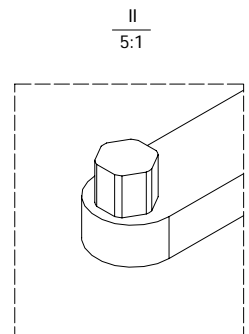
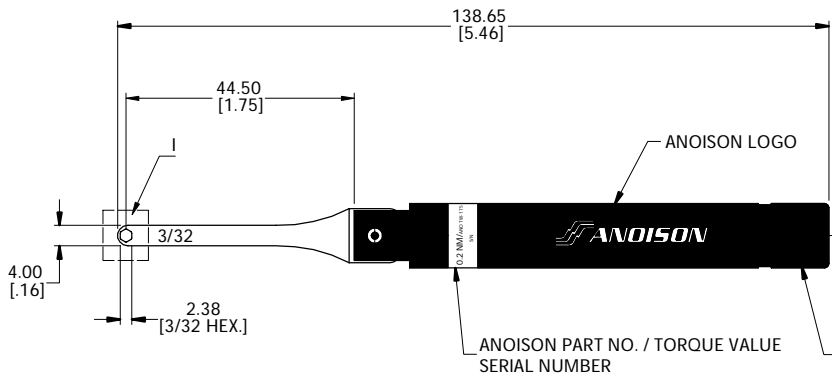
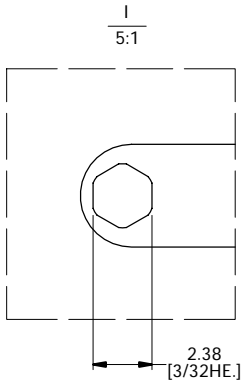


REVISIONS			
REV.	DESCRIPTION	DATE	APPROVED
A	INITIAL RELEASE	04/02/25	J. Q
B	1. 4.00 [.157] WAS 6.00 [.236] 2. 2.00 [.079] WAS 3.50 [.138] 3. 2.00 [.079] WAS 2.50 [.098] 4. 138.65 [5.459] WAS 140.00 [5.512] 5. 1.65 [.065] ADDED	04/03/25	J. Q



- TORQUE VALUE: 0.2±0.008 NM [1.77±0.07 IN.LBS]
- SIZE: 2.38 MM [3/32 IN.]
- PRINT CONTENT ON HANDLE(WHITE COLOR): ANOISON LOGO

DRAWN	X. Y	DATE	04/03/25
CHECKED	W. Y	DATE	04/03/25
APPROVED	J. Q	DATE	04/03/25
UNLESS OTHERWISE SPECIFIED DIMENSIONS ARE IN MILLIMETERS, DIMENSIONS IN [] ARE IN INCHES FOR CUSTOMER REFERENCE ONLY UNLESS OTHERWISE SPECIFIED TOLERANCE ARE:		THESE DRAWINGS AND SPECIFICATIONS ARE THE PROPERTY OF ANOISON ELECTRONICS LTD AND SHOULD NOT BE USED WITHOUT WRITTEN PERMISSION COPYRIGHT © 2025 ANOISON ELECTRONICS LTD	
.XX	±0.13 [.005"]		
.X	±0.20 [.008"]		
X	±0.50 [.019"]		
.X°	±1°		
X°	±2°		



TITLE			
TORQUE WRENCH FOR 4-40 SCREW PRESET TORQUE= 0.2±0.008NM [1.77±0.07 IN.LBS] HEX SIZE 2.38 MM [3/32 IN.]			
VIEW	PART NO.		
	ANO TW-175		
SIZE	SCALE	SHEET	REV.
A3	1:1	1/1	B