

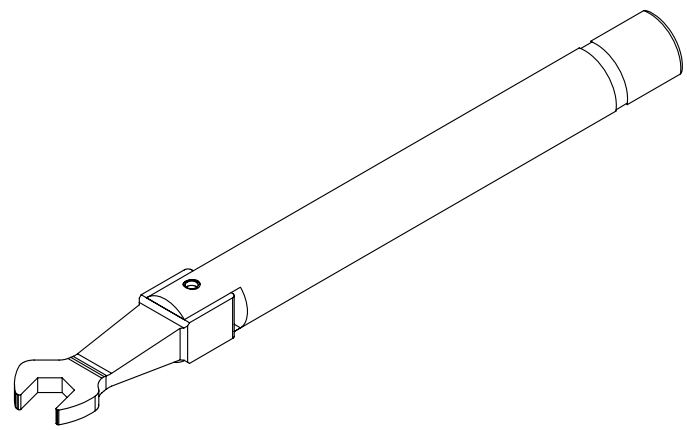
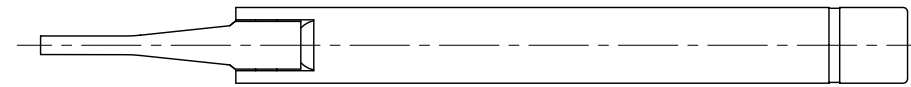
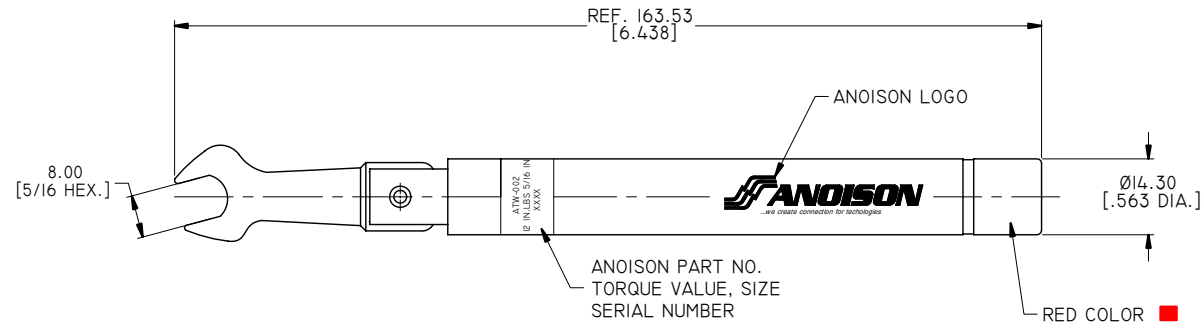
4

3

2

1

REVISIONS			
REV.	DESCRIPTION	DATE	APPROVED
A	INITIAL RELEASE	01/15/11	J. QU
B	1.36±0.08 NM [12±0.70 IN.LBS] WAS 1.36±0.05 NM [12±0.48 IN.LBS]	02/06/17	J. QU



- TORQUE VALUE: 1.36±0.05 NM [12±0.48 IN. LBS]
- SIZE: 8.0 MM [5/16 IN.]
- PRINT CONTENT ON HANDLE(WHITE COLOR): ANOISON LOGO

DRAWN	X. B. YANG	DATE	02/06/17
CHECKED	L. YANG	DATE	02/06/17
APPROVED	J. QU	DATE	02/06/17
UNLESS OTHERWISE SPECIFIED DIMENSIONS ARE IN MILLIMETERS, DIMENSIONS IN [] ARE IN INCHES FOR CUSTOMER REFERENCE ONLY UNLESS OTHERWISE SPECIFIED TOLERANCE ARE:		THESE DRAWINGS AND SPECIFICATIONS ARE THE PROPERTY OF ANOISON ELECTRONICS LTD AND SHOULD NOT BE USED WITHOUT WRITTEN PERMISSION COPYRIGHT © 2017 ANOISON ELECTRONICS LTD	
.XX	±0.13 [.005"]		
.X	±0.20 [.008"]		
X	±0.50 [.019"]		
.X°	±1°		
X°	±2°		



TITLE TORQUE WRENCH FOR SMA/3.5 MM/2.92 MM/2.4 MM/1.85MM TYPE CONNECTORS
PRESET TORQUE= 1.36±0.05 NM [12±0.48 IN.LBS]
HEX SIZE 8.0 MM [5/16 IN.]

VIEW		PART NO. ANO TW-002		
SIZE	SCALE	SHEET	REV.	
A3	1:1	1/1	B	

4

3

2

1