

4 3 2 1

| REVISIONS |                 |          |          |
|-----------|-----------------|----------|----------|
| REV.      | DESCRIPTION     | DATE     | APPROVED |
| A         | INITIAL RELEASE | 01/30/24 | J. Q     |
|           |                 |          |          |

**1.0 MATERIAL & FINISH**

- 1.1 BODY: BERYLLIUM COPPER ALLOY, GOLD PLATED
- 1.2 CENTER CONTACT: BERYLLIUM COPPER ALLOY, GOLD PLATED
- 1.3 INSULATOR: PTFE

**3.0 ELECTRICAL SPECIFICATIONS:**

- 3.1 IMPEDANCE: 50 Ω
- 3.2 FREQUENCY RANGE: DC-12.4GHZ
- 3.3 VSWR: ≤1.40

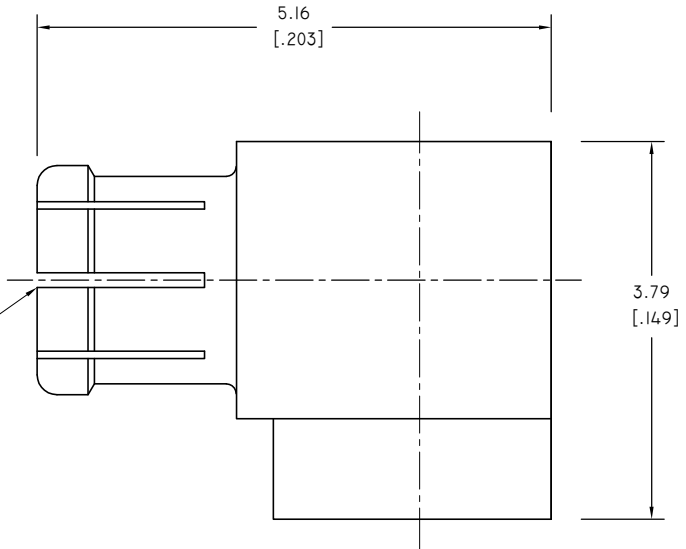
**2.0 ENVIRONMENTAL DATA:**

- 2.1 TEMPERATURE RANGE: -55°C~+165°C
- 2.2 2011/65/EU (RoHS): COMPLIANT


D  
C  
B  
A

D  
C  
B  
A

SMPM FEMALE INTERFACE  
PRE MIL-STD-348B  
ACCEPTS Ø0.3±0.025[.012±.001 DIA.] PIN



|   |                 |  |          |
|---|-----------------|--|----------|
| DRAWN   | W. Y            | DATE   | 01/30/24 |
| CHECKED   | X. Y            | DATE   | 01/30/24 |
| APPROVED  | J. Q            | DATE   | 01/30/24 |
| UNLESS OTHERWISE SPECIFIED DIMENSIONS ARE IN MILLIMETERS, DIMENSIONS IN [ ] ARE IN INCHES FOR CUSTOMER REFERENCE ONLY UNLESS OTHERWISE SPECIFIED TOLERANCE ARE: |                 | THESE DRAWINGS AND SPECIFICATIONS ARE THE PROPERTY OF ANOISON ELECTRONICS LTD AND SHOULD NOT BE USED WITHOUT WRITTEN PERMISSION COPYRIGHT © 2024 ANOISON ELECTRONICS LTD |          |
| .XX   | ±0.13 [ .005" ] |  |          |
| .X  | ±0.20 [ .008" ] |  |          |
| X   | ±0.50 [ .019" ] |  |          |
| X°  | ±1°             |  |          |
| X*  | ±2°             |  |          |



**TITLE**  
SMPM R/A FEMALE SOLDER FOR .047 S/R CABLE

**PART NO.**  
ANO 9422-2087

|             |  |                   |                      |                     |                  |
|-------------|--|-------------------|----------------------|---------------------|------------------|
| <b>VIEW</b> |  | <b>SIZE</b><br>A3 | <b>SCALE</b><br>10:1 | <b>SHEET</b><br>1/1 | <b>REV.</b><br>A |
|-------------|--|-------------------|----------------------|---------------------|------------------|

4 3 2 1