

4 3 2 1

**MATERIAL & FINISH:**

- 1 BODY: BERYLLIUM COPPER ALLOY, GOLD PLATED
- 2 CENTER CONTACT: BERYLLIUM COPPER ALLOY, GOLD PLATED
- 3 INSULATOR: PTFE

**ENVIRONMENTAL DATA:**

- 1 TEMPERATURE RANGE: -40°C~+125°C
- 2 2011/65/EU (RoHS): COMPLIANT

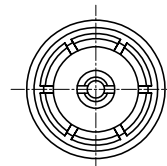
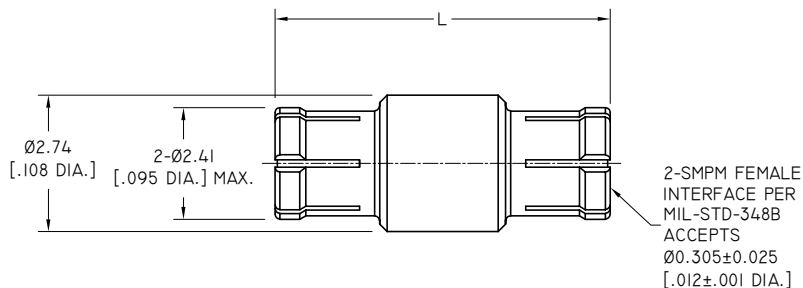
**ELECTRICAL DATA:**

- 1 IMPEDANCE: 50 Ω
- 2 FREQUENCY RANGE: DC~65GHZ
- 3 VSWR: 1.15 MAX. AT DC TO 18 GHZ  
1.25 MAX. AT 18 TO 40 GHZ  
1.45 MAX. AT 40 TO 65 GHZ
- 4 INSERTION LOSS: 0.1 X-V(GHZ) DB MAX.
- 5 VOLTAGE RATING: 325 V MAX.
- 6 INSULATION RESISTANCE: 5000 MΩ MIN.

**MECHANICAL DATA:**

- 1 CONTACT RETENTION: 1.5 LBS MIN. AXIAL FORCE
- 2 ENGAGEMENT FORCE:  
FULL DETENT (FD): 4.5 LBS (20 N) TYP.  
SMOOTH BORE (SB): 2.5 LBS (11.13N) TYP.
- 3 DISENGAGEMENT FORCE:  
FULL DETENT (FD): 6.5 LBS (28.9 N) TYP.  
SMOOTH BORE (SB): 1.5LBS (6.68N) TYP.
- 4 DURABILITY:  
FULL DETENT (FD): 100 MATING CYCLES MIN.  
SMOOTH BORE (SB): 500 MATING CYCLES MIN.

REVISIONS			
REV.	DESCRIPTION	DATE	APPROVED
A	INITIAL RELEASE	08/13/16	J. Q
B	ADDED PART NO.	01/09/20	J. Q
C	ADDED PART NO.	08/19/24	J. Q



PART NO.	L
ANO 942-942-1381	6.73 [.265]
ANO 942-942-1526	5.36 [.211]
ANO 942-942-1527	12.7 [.500]
ANO 942-942-1681	6.10 [.240]

DRAWN	W. Y	DATE	08/19/24
CHECKED	X. Y	DATE	08/19/24
APPROVED	J. Q	DATE	08/19/24
UNLESS OTHERWISE SPECIFIED DIMENSIONS ARE IN MILLIMETERS, DIMENSIONS IN [ ] ARE IN INCHES FOR CUSTOMER REFERENCE ONLY UNLESS OTHERWISE SPECIFIED TOLERANCE ARE:		THESE DRAWINGS AND SPECIFICATIONS ARE THE PROPERTY OF ANOISON ELECTRONICS LTD AND SHOULD NOT BE USED WITHOUT WRITTEN PERMISSION COPYRIGHT © 2024 ANOISON ELECTRONICS LTD	
.XX	±0.13 [.005"]		
.X	±0.20 [.008"]		
X°	±0.50 [.019"]		
X*	±1°		
X*	±2°		

**TITLE**  
ADAPTER, SMPM FEMALE TO SMPM FEMALE

**VIEW**

**PART NO.**  
ANO 942-942-XXXX

<b>SIZE</b> A3	<b>SCALE</b> 10:1	<b>SHEET</b> 1/1	<b>REV.</b> C
-------------------	----------------------	---------------------	------------------

4 3 2 1