

4

3

2

1

**MATERIAL & FINISH:**

- 1 BODY: BERYLLIUM COPPER ALLOY, GOLD PLATED
- 2 CENTER CONTACT: BERYLLIUM COPPER ALLOY, GOLD PLATED
- 3 INSULATOR: PTFE
- 4 SLEEVE: STAINLESS STEEL, PASSIVATED
- 5 SPRING: STAINLESS STEEL, PASSIVATED

**ENVIRONMENTAL DATA:**

- 1 TEMPERATURE RANGE: -55 °C ~ +125 °C
- 2 2011/65/EU (RoHS) AND 2015/863/(RoHS): COMPLIANT
- 3 1907/2006/EC (REACH): COMPLIANT

**ELECTRICAL DATA:**

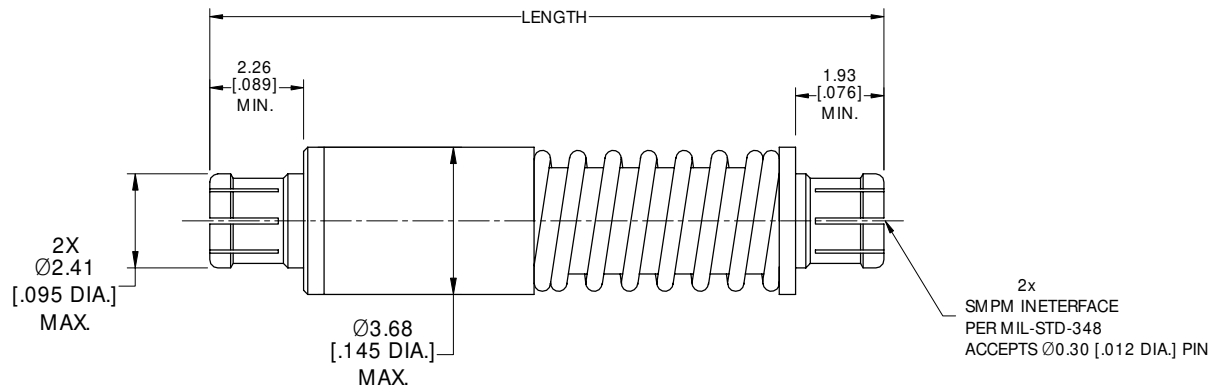
- 1 IMPEDANCE: 50 Ω
- 2 FREQUENCY RANGE: DC~40 GHz

**MECHANICAL DATA:**

- 1 ENGAGE FORCE:  
FULL DEFLECTION: 9 LB MAX.  
SMOOTH BORE: 2.5 LB MAX.
- 2 DISENGAGE FORCE:  
FULL DEFLECTION: 2 LB MIN.  
SMOOTH BORE: 0.5 LB MIN.

## REVISIONS

REV.	DESCRIPTION	DATE	APPROVED
A	INITIAL RELEASE	02/17/23	J Q



PART NO.	LENGTH	
	FULL COMPRESSED	UNCOMPRESSED
ANO 942-942-1618	13.97 [.550]	16.50 [.650]
ANO 942-942-1619	16.26 [.640]	18.80 [.740]
ANO 942-942-1620	18.54 [.730]	21.08 [.830]
ANO 942-942-1621	20.83 [.820]	23.37 [.920]
ANO 942-942-1622	23.11 [.910]	26.65 [1.010]

DRAWN	X. Y	DATE	02/17/23			
CHECKED	W. Y	DATE	02/17/23			
APPROVED	J Q	DATE	02/17/23			
UNLESS OTHERWISE SPECIFIED DIMENSIONS ARE IN MILLIMETERS, DIMENSIONS IN [ ] ARE IN INCHES FOR CUSTOMER REFERENCE ONLY UNLESS OTHERWISE SPECIFIED TOLERANCE ARE:		THESE DRAWINGS AND SPECIFICATIONS ARE THE PROPERTY OF ANOISON ELECTRONICS LTD AND SHOULD NOT BE USED WITHOUT WRITTEN PERMISSION COPYRIGHT © 2023 ANOISON ELECTRONICS LTD		TITLE	ADAPTER, TELESCOPIC SMPM FEMALE TO FEMALE	
		VIEW	PART NO.		ANO 942-942-1618-1622	
			SIZE	SCALE	SHEET	REV.
			A3	8:1	1/1	A

4

3

2

1