

4

3

2

1

**1.0 MATERIAL & FINISH**

- 1.1 BODY: BERYLLIUM COPPER ALLOY, GOLD PLATED
- 1.2 CENTER CONTACT: BERYLLIUM COPPER ALLOY, GOLD PLATED
- 1.3 INSULATOR: PEI

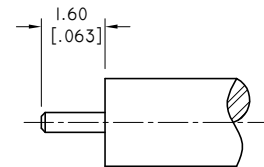
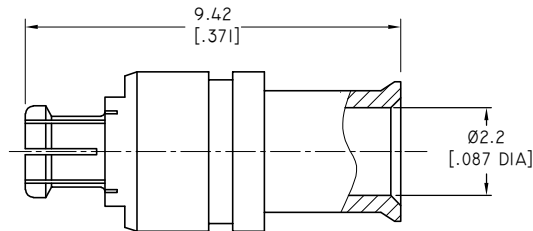
**2.0 ENVIRONMENTAL DATA:**

- 2.1 TEMPERATURE RANGE: -55°C~+165°C
- 2.2 2011/65/EU (RoHS): COMPLIANT

**3.0 ELECTRICAL SPECIFICATIONS:**

- 3.1 IMPEDANCE: 50 Ω
- 3.2 FREQUENCY RANGE: DC~65GHZ
- 3.3 VSWR: 1.25 MAX. AT DC~26.5GHZ  
1.35 MAX. AT 26.5~40GHZ  
1.50 MAX. AT 40~65GHZ

REVISIONS			
REV.	DESCRIPTION	DATE	APPROVED
A	INITIAL RELEASE	12/20/23	J. Q



CABLE STRIPPING DIMENSIONS

D

D

C

C

B

B

A

A


4

3

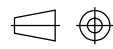
2

1

DRAWN	W. Y	DATE	12/20/23
CHECKED	X. Y	DATE	12/20/23
APPROVED	J. Q	DATE	12/20/23
UNLESS OTHERWISE SPECIFIED DIMENSIONS ARE IN MILLIMETERS, DIMENSIONS IN [ ] ARE IN INCHES FOR CUSTOMER REFERENCE ONLY UNLESS OTHERWISE SPECIFIED TOLERANCE ARE:		THESE DRAWINGS AND SPECIFICATIONS ARE THE PROPERTY OF ANOISON ELECTRONICS LTD AND SHOULD NOT BE USED WITHOUT WRITTEN PERMISSION COPYRIGHT © 2023 ANOISON ELECTRONICS LTD	
.XX	±0.13 [0.005"]		
.X	±0.20 [0.008"]		
X	±0.50 [0.019"]		
.X°	±1°		
X°	±2°		



**TITLE**  
SMPM STRAIGHT FEMALE SOLDER FOR .086 CABLE

**VIEW** 

**PART NO.**  
ANO 9412-2085

<b>SIZE</b> A3	<b>SCALE</b> 8:1	<b>SHEET</b> 1/1	<b>REV.</b> A
-------------------	---------------------	---------------------	------------------

4

3

2

1