

**MATERIAL & FINISH:**

- 1 BODY: BERYLLIUM COPPER ALLOY, GOLD PLATED
- 2 CENTER CONTACT: BERYLLIUM COPPER ALLOY, GOLD PLATED
- 3 INSULATOR: PTFE
- 4 COMPRESSION SPRING: STAINLESS STEEL, PASSIVATED
- 5 SLEEVE: STAINLESS STEEL, PASSIVATED
- 6 WASHER: STAINLESS STEEL, PASSIVATED

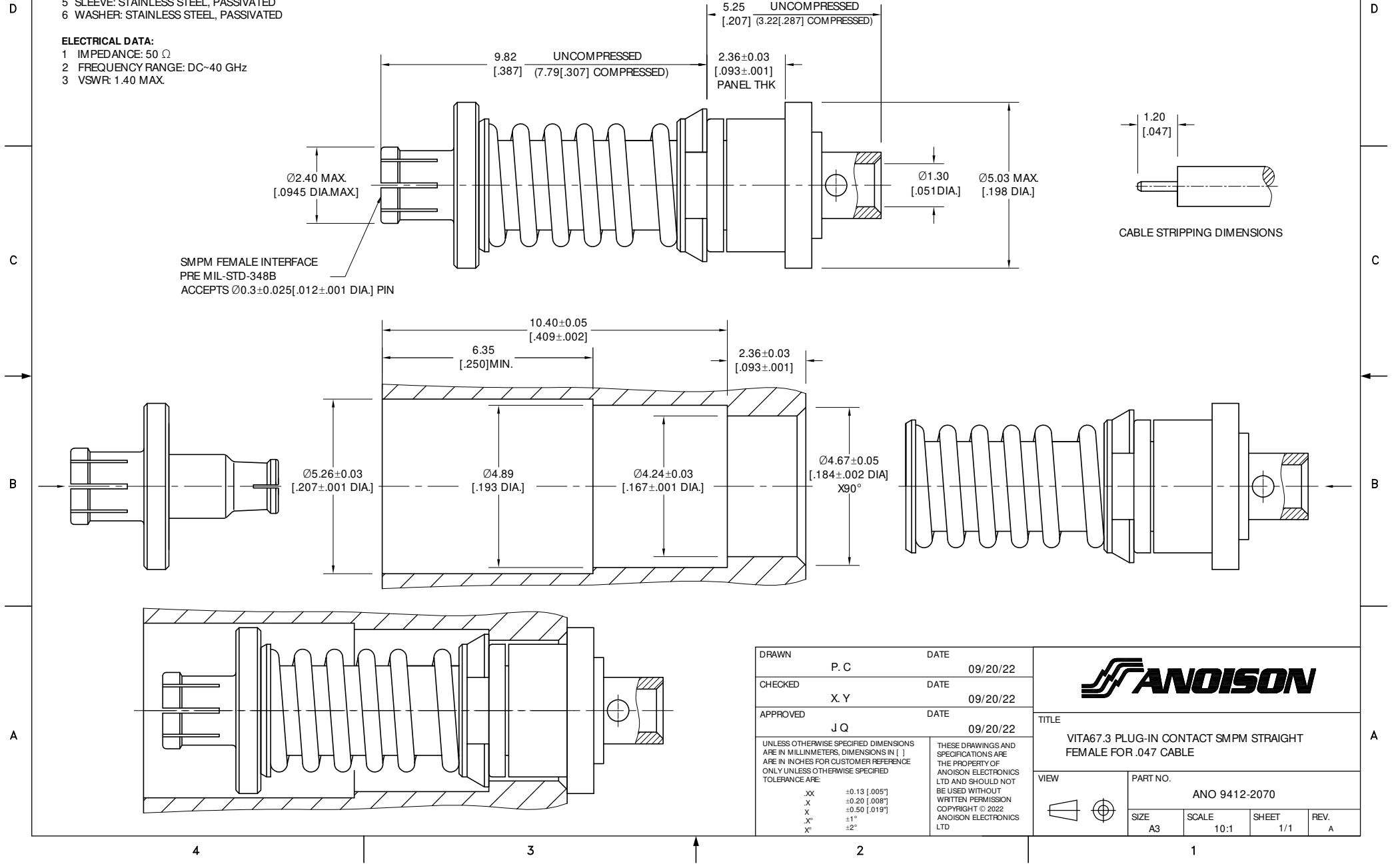
**ELECTRICAL DATA:**

- 1 IMPEDANCE: 50 Ω
- 2 FREQUENCY RANGE: DC-40 GHz
- 3 VSWR: 1.40 MAX.

**ENVIRONMENTAL DATA:**

- 1 TEMPERATURE RANGE: -55 °C~+165 °C
- 2 2011/65/EU(RoHS) AND 2015/863/(RoHS): COMPLIANT
- 3 1999/45/EC(REACH): COMPLIANT

REVISIONS			
REV.	DESCRIPTION	DATE	APPROVED
A	INITIAL RELEASE	09/20/22	J Q



DRAWN	P. C	DATE	09/20/22
CHECKED	X. Y	DATE	09/20/22
APPROVED	J Q	DATE	09/20/22

**ANOISON**

TITLE  
VITA67.3 PLUG-IN CONTACT SMPM STRAIGHT FEMALE FOR .047 CABLE

VIEW

PART NO.  
ANO 9412-2070

SIZE	SCALE	SHEET	REV.
A3	10:1	1/1	A