

4 3 2 1

REVISIONS			
REV.	DESCRIPTION	DATE	APPROVED
A	INITIAL RELEASE	01/31/20	J. QU
B	ADDED INSTALLATION DRAWING	04/21/21	J. QU
C	ADDED MODULE 9321-60086	07/02/24	J. QU

1.0 MATERIAL & FINISH

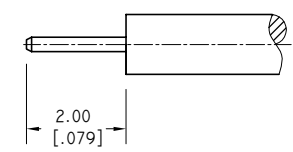
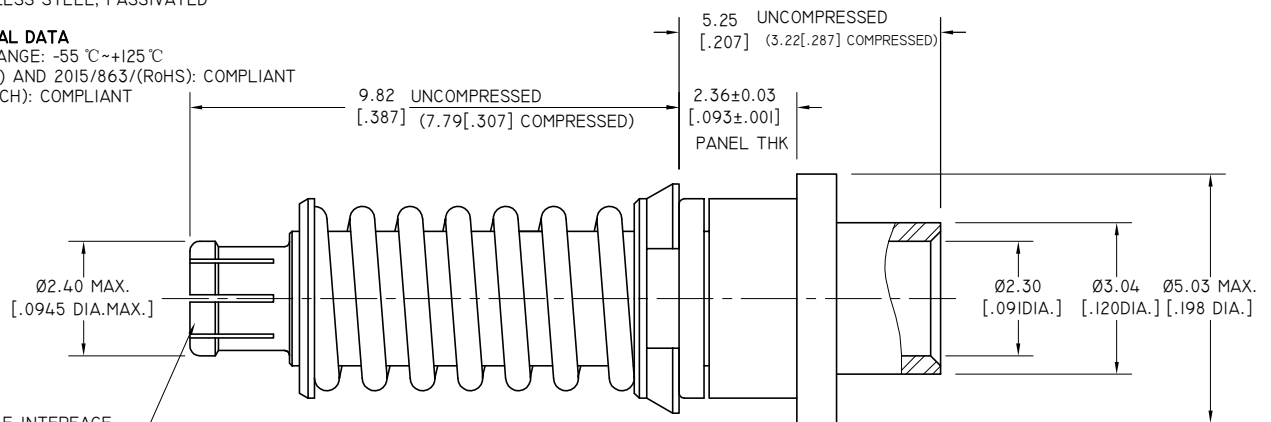
- 1 BODY: BERYLLIUM COPPER ALLOY, GOLD PLATED
- 2 CENTER CONTACT: BERYLLIUM COPPER ALLOY, GOLD PLATED
- 3 INSULATOR: PTFE
- 4 COMPRESSION SPRING: STAINLESS STEEL, PASSIVATED
- 5 SLEEVE: STAINLESS STEEL, PASSIVATED
- 6 WASHER: STAINLESS STEEL, PASSIVATED

3.0 ELECTRICAL SPECIFICATIONS

- 1 IMPEDANCE: 50 Ω
- 2 FREQUENCY RANGE: DC~40GHZ
- 3 VSWR: 1.30 TYP.

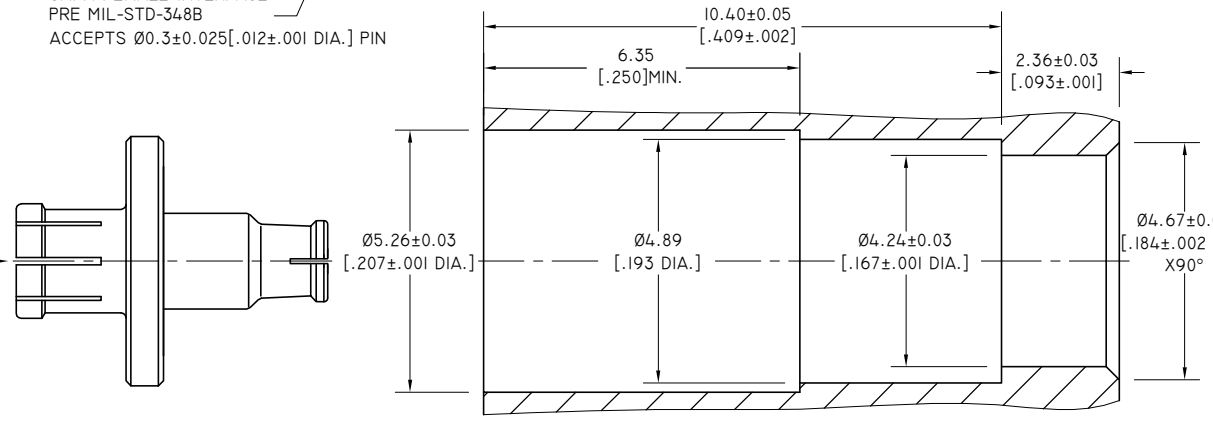
2.0 ENVIRONMENTAL DATA

- 1 TEMPERATURE RANGE: -55 °C~+125 °C
- 2 2011/65/EU(RoHS) AND 2015/863/(RoHS): COMPLIANT
- 3 1999/45/EC(REACH): COMPLIANT

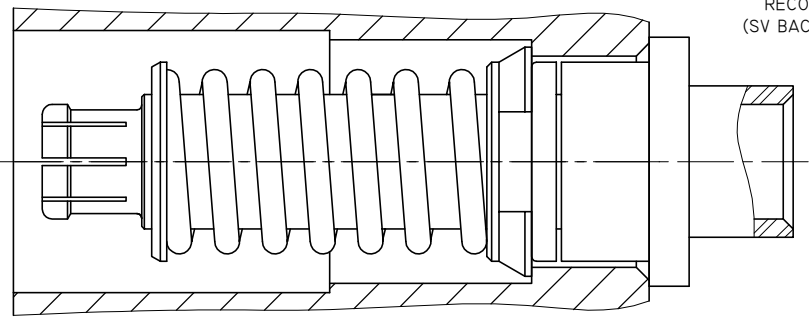


CABLE STRIPPING DIMENSIONS

SMPM FEMALE INTERFACE
PRE MIL-STD-348B
ACCEPTS Ø0.3±0.025[.012±.001 DIA.] PIN



RECOMMENDED MOUNTING HOLE
(SV BACKPLATE MODULE 9321-60086)



DRAWN	P. CHEN	DATE	07/02/24
CHECKED	L. YANG	DATE	07/02/24
APPROVED	J. QU	DATE	07/02/24
UNLESS OTHERWISE SPECIFIED DIMENSIONS ARE IN MILLIMETERS, DIMENSIONS IN [] ARE IN INCHES FOR CUSTOMER REFERENCE ONLY UNLESS OTHERWISE SPECIFIED TOLERANCE ARE:		THESE DRAWINGS AND SPECIFICATIONS ARE THE PROPERTY OF ANOISON ELECTRONICS LTD AND SHOULD NOT BE USED WITHOUT WRITTEN PERMISSION COPYRIGHT © 2024 ANOISON ELECTRONICS LTD	
.XX	±0.13 [.005"]		
.X	±0.20 [.008"]		
X°	±0.50 [.019"]		
X°	±1°		
X°	±2°		



TITLE			
VITA67.3 PLUG-IN CONTACT SMPM STRAIGHT FEMALE FOR .086 CABLE			
VIEW	PART NO.	ANO 9412-2044	
	SIZE	SCALE	SHEET
	A3	10:1	I/I
			REV. C

4 3 2 1