

4

3

2

1

**1.0 MATERIAL & FINISH**

- 1.1 BODY: BERYLLIUM COPPER ALLOY, GOLD PLATED
- 1.2 SPRING: STAINLESS STEEL, PASSIVATED
- 1.3 CENTER CONTACT: BERYLLIUM COPPER ALLOY, GOLD PLATED
- 1.4 INSULATOR: PTFE
- 1.5 QUARTERTURN NUT: STAINLESS STEEL, PASSIVATED

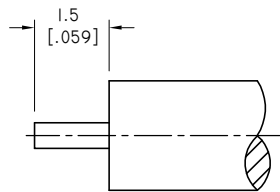
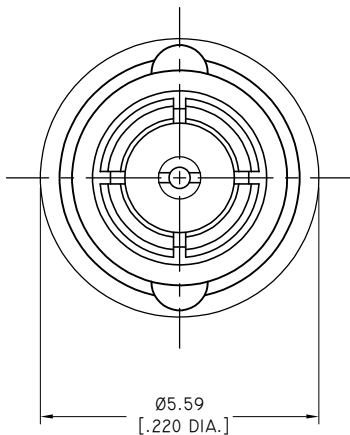
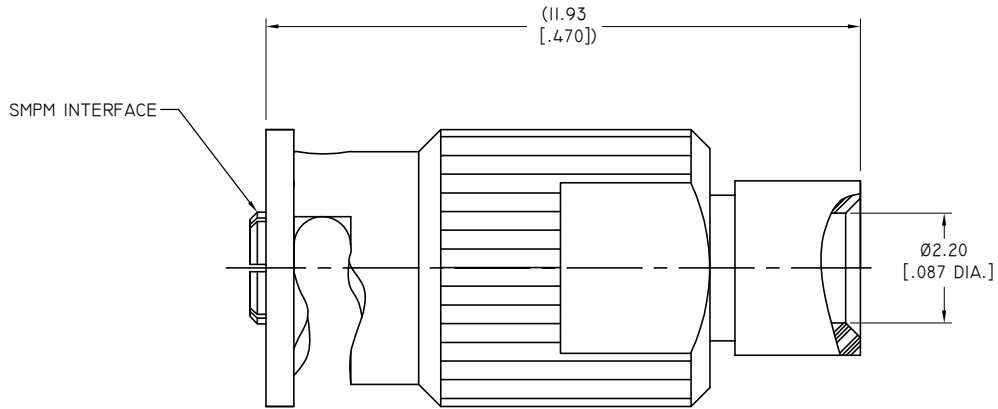
**2.0 ENVIRONMENTAL DATA:**

- 2.1 TEMPERATURE RANGE: -55°C~+125°C
- 2.2 2011/65/EU (RoHS): COMPLIANT

**3.0 ELECTRICAL DATA:**

- 3.1 IMPEDANCE: 50 Ω
- 3.2 FREQUENCY RANGE: DC~65GHZ
- 3.3 VSWR: ≤1.30 AT DC~18GHZ

| REVISIONS |                 |          |          |
|-----------|-----------------|----------|----------|
| REV.      | DESCRIPTION     | DATE     | APPROVED |
| D         | INITIAL RELEASE | 01/30/18 | J. QU    |
| E         |                 |          |          |
|           |                 |          |          |



CABLE STRIPPING DIMENSIONS

|   |               |  |          |
|---|---------------|--|----------|
| DRAWN   | W. YANG       | DATE   | 01/30/18 |
| CHECKED   | X. B. YANG    | DATE   | 01/30/18 |
| APPROVED  | J. QU         | DATE   | 01/30/18 |
| UNLESS OTHERWISE SPECIFIED DIMENSIONS ARE IN MILLIMETERS, DIMENSIONS IN [ ] ARE IN INCHES FOR CUSTOMER REFERENCE ONLY UNLESS OTHERWISE SPECIFIED TOLERANCE ARE: |               | THESE DRAWINGS AND SPECIFICATIONS ARE THE PROPERTY OF ANOISON ELECTRONICS LTD AND SHOULD NOT BE USED WITHOUT WRITTEN PERMISSION COPYRIGHT © 2018 ANOISON ELECTRONICS LTD |          |
| .XX   | ±0.13 [.005"] |  |          |
| .X  | ±0.20 [.008"] |  |          |
| X   | ±0.50 [.019"] |  |          |
| X°  | ±1°           |  |          |
| X*  | ±2°           |  |          |



|  |               |       |      |
|--|---------------|-------|------|
| TITLE  |               |       |      |
| SMPM-QT(SMPM QUARTERTURN) STRAIGHT FEMALE NUT FOR .086 CABLE |               |       |      |
| VIEW   | PART NO.      |       |      |
|  | ANO 9412-2021 |       |      |
| SIZE   | SCALE         | SHEET | REV. |
| A3   | 10:1          | I/I   | A    |

4

3

2

1