

4 3 2 1

REVISIONS			
REV.	DESCRIPTION	DATE	APPROVED
A	INITIAL RELEASE	05/10/16	J. QU
B	CHANGED STRUCTURE	06/08/16	J. QU
C	CHANGED STRUCTURE	12/04/19	J. QU
D	CHANGED FREQUENCY	05/07/21	J. QU

1.0 MATERIAL & FINISH

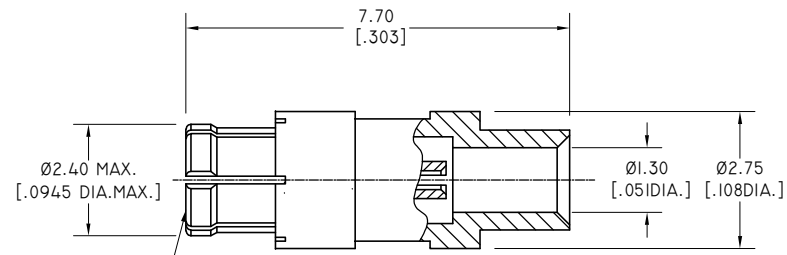
- 1.1 BODY: BERYLLIUM COPPER ALLOY, GOLD PLATED
- 1.2 CENTER CONTACT: BERYLLIUM COPPER ALLOY, GOLD PLATED
- 1.3 INSULATOR: PTFE

3.0 ELECTRICAL SPECIFICATIONS:

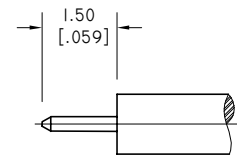
- 3.1 IMPEDANCE: 50 Ω
- 3.2 FREQUENCY RANGE: DC-65GHZ
- 3.3 VSWR: 1.30 MAX. TYPICAL @ DC-40 GHZ

2.0 ENVIRONMENTAL DATA:

- 2.1 TEMPERATURE RANGE: -55°C~+165°C
- 2.2 2011/65/EU(RoHS) AND 2015/863/(RoHS): COMPLIANT
- 2.3 1999/45/EC(REACH): COMPLIANT



SMPM FEMALE INTERFACE
PRE MIL-STD-348B
ACCEPTS $\varnothing 0.3 \pm 0.025 [0.012 \pm 0.001 \text{ DIA.}]$ PIN



CABLE STRIPPING DIMENSIONS

DRAWN	P. CHEN	DATE	05/07/21
CHECKED	L. YANG	DATE	05/07/21
APPROVED	J. QU	DATE	05/07/21
UNLESS OTHERWISE SPECIFIED DIMENSIONS ARE IN MILLIMETERS, DIMENSIONS IN [] ARE IN INCHES FOR CUSTOMER REFERENCE ONLY UNLESS OTHERWISE SPECIFIED TOLERANCE ARE:		THESE DRAWINGS AND SPECIFICATIONS ARE THE PROPERTY OF ANOISON ELECTRONICS LTD AND SHOULD NOT BE USED WITHOUT WRITTEN PERMISSION COPYRIGHT © 2021 ANOISON ELECTRONICS LTD	
.XX	±0.13 [0.005"]		
.X	±0.20 [0.008"]		
X	±0.50 [0.019"]		
X°	±1°		
X*	±2°		

TITLE
SMPM STRAIGHT FEMALE SOLDER FOR .047 CABLE

VIEW

PART NO.
ANO 9412-2004

SIZE A3	SCALE 10:1	SHEET 1/1	REV. D
-------------------	----------------------	---------------------	------------------

4 3 2 1