

MATERIAL & FINISH:

- 1 BODY: BRASS, GOLD PLATED
- 2 CENTER CONTACT: BERYLLIUM COPPER ALLOY, GOLD PLATED
- 3 INSULATOR: PTFE
- 4 O-RING: FLUOROCARBON RUBBER

MECHANICAL DATA:

- 1 CENTER CONTACT RETENTION
AXIAL FORCE-MATING END -- 4 N MIN.
AXIAL FORCE-OPPOSITE END -- 4 N MIN.
TORQUE -- NA N.CM MIN.
- 2 RECOMMENDED TORQUE
MATING -- NA N.CM
PANEL NUT -- 25 N.CM
- 3 MATING LIFE: 500 CYCLE MIN.

ELECTRICAL DATA:

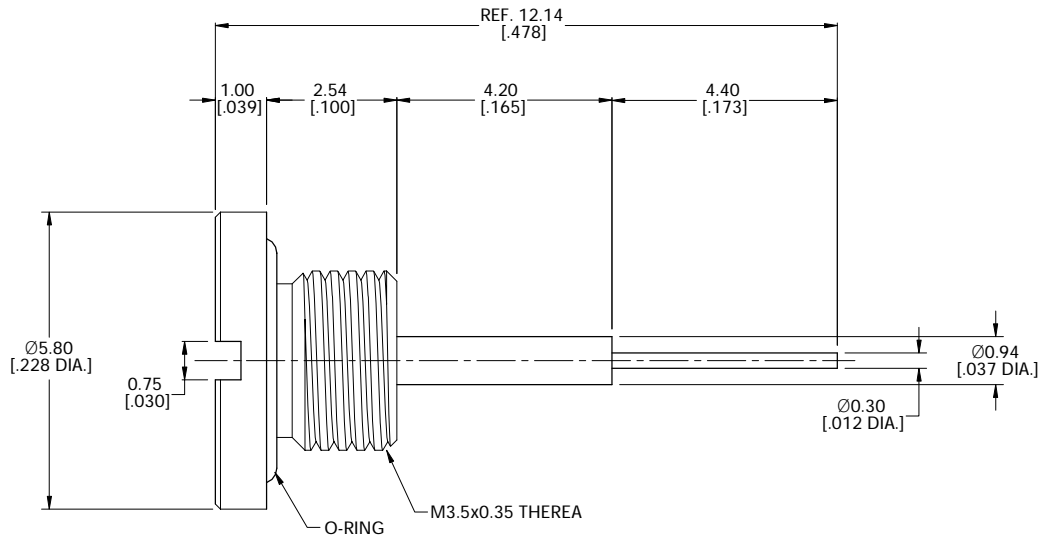
- 1 IMPEDANCE: 50 Ω
- 2 FREQUENCY RANGE: DC-65 GHz
- 3 VSWR: 1.05+0.01 X F(GHZ) MAX.
- 4 INSERTION LOSS: 0.12 X √F(GHZ) DB MAX.
- 5 VOLTAGE RATING: 335 VEFF MAX.
- 6 DIELECTRIC WITHSTANDING VOLTAGE: 500 VEFF MIN.
- 7 INSULATION RESISTANCE: 5000 MΩ MIN.

ENVIRONMENTAL DATA:

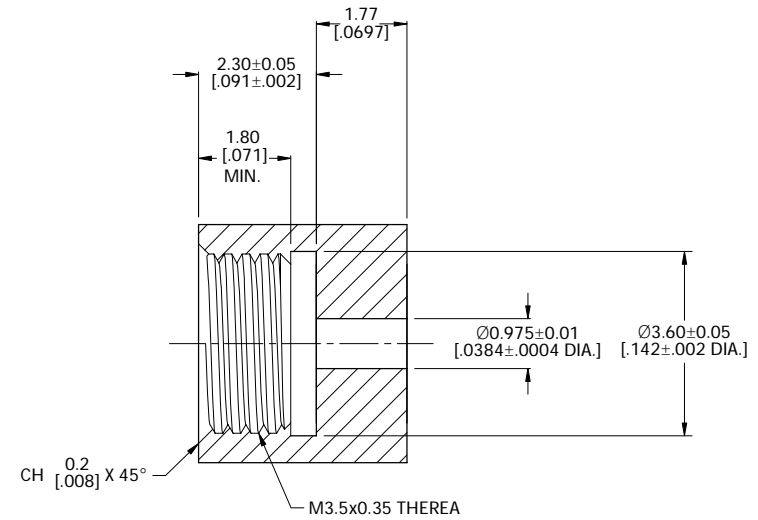
- 1 TEMPERATURE RANGE: -65°C ~ +165°C
- 2 2011/65/EU(RoHS) AND 2015/863/(RoHS): COMPLIANT
- 3 1907/2006/EC(REACH): COMPLIANT

REVISIONS

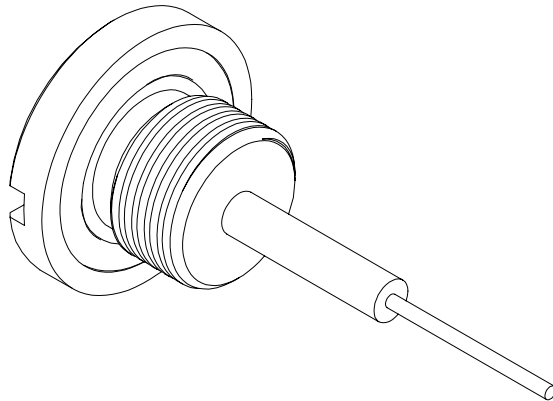
REV.	DESCRIPTION	DATE	APPROVED
A	INITIAL RELEASE	02/19/21	J. Q
B	BODY MATERIAL CHANGED TO BRASS	06/09/23	J. Q



IN ACCORDANCE WITH CUSTOMER PANEL DIMENSIONS



RECOMMENDED MOUNTING HOLE



DRAWN	X. Y	DATE	06/09/23
CHECKED	W. Y	DATE	06/09/23
APPROVED	J. Q	DATE	06/09/23

UNLESS OTHERWISE SPECIFIED DIMENSIONS ARE IN MILLIMETERS. DIMENSIONS IN [] ARE IN INCHES FOR CUSTOMER REFERENCE ONLY UNLESS OTHERWISE SPECIFIED TOLERANCE ARE:

XX	±0.13 [005"]
X	±0.20 [008"]
X	±0.50 [019"]
X°	±1°
X"	±2°

THESE DRAWINGS AND SPECIFICATIONS ARE THE PROPERTY OF ANOISON ELECTRONICS LTD AND SHOULD NOT BE USED WITHOUT WRITTEN PERMISSION COPYRIGHT © 2023 ANOISON ELECTRONICS LTD



TITLE
SMPM STRAIGHT MALE SCREW TYPE SMOOTH BORE

VIEW	PART NO. ANO 9411-6051			
	SIZE A3	SCALE 10:1	SHEET 1/1	REV. B