

4 3 2 1

MATERIAL & FINISH:

- 1 BODY: STAINLESS STEEL, GOLD PLATED
- 2 CENTER CONTACT: BERYLLIUM COPPER ALLOY, GOLD PLATED
- 3 INSULATOR: TORLON

ELECTRICAL DATA:

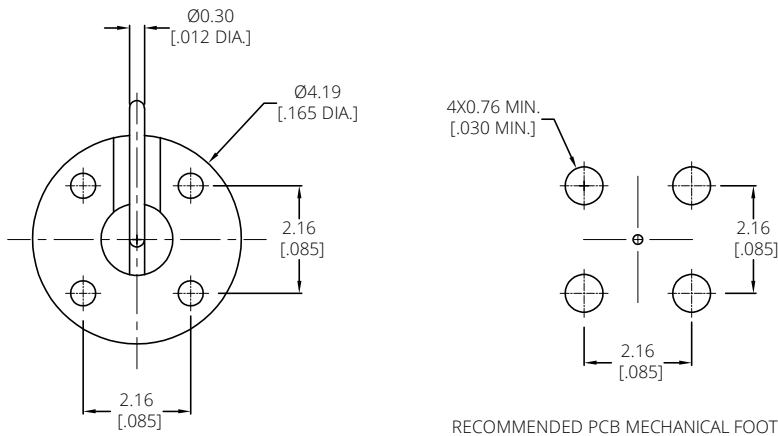
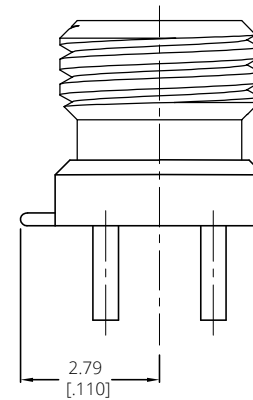
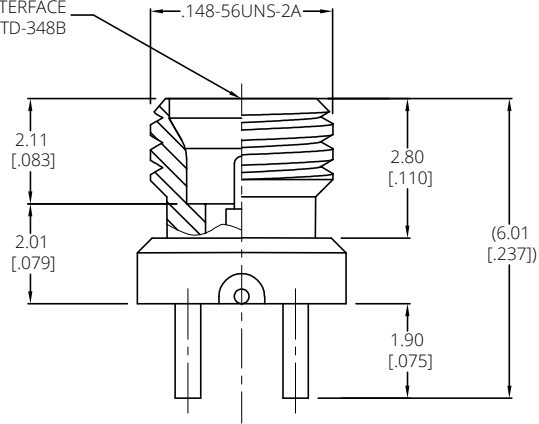
- 1 IMPEDANCE: 50 Ω
- 2 FREQUENCY RANGE: DC-40 GHz

ENVIRONMENTAL DATA:

- 1 2011/65/EU(RoHS) AND 2015/863/(RoHS): COMPLIANT
- 2 1907/2006/EC(REACH): COMPLIANT

REVISIONS			
REV.	DESCRIPTION	DATE	APPROVED
A	INITIAL RELEASE	03/15/24	J. Q

SMPM MALE
"A" INTERFACE
PRE MIL-STD-348B



RECOMMENDED PCB MECHANICAL FOOTPRINT

DRAWN	W. Y	DATE	03/15/24
CHECKED	X. Y	DATE	03/15/24
APPROVED	J. Q	DATE	03/15/24
UNLESS OTHERWISE SPECIFIED DIMENSIONS ARE IN MILLIMETERS, DIMENSIONS IN [] ARE IN INCHES FOR CUSTOMER REFERENCE ONLY UNLESS OTHERWISE SPECIFIED TOLERANCE ARE:		THESE DRAWINGS AND SPECIFICATIONS ARE THE PROPERTY OF ANOISON ELECTRONICS LTD AND SHOULD NOT BE USED WITHOUT WRITTEN PERMISSION COPYRIGHT © 2024 ANOISON ELECTRONICS LTD	
XX	±0.13 [.005"]		
X	±0.20 [.008"]		
x	±0.50 [.019"]		
x°	±1°		
x°	±2°		



TITLE			
SMPM-T MALE PCB MOUNT, SMOOTH BORE			
VIEW	PART NO.		
	ANO 9411-5088		
SIZE	SCALE	SHEET	REV.
A3	5:1	1/1	A

4 3 2 1