

4

3

2

1

**MATERIAL & FINISH:**

- 1 BODY: BERYLLIUM COPPER, GOLD PLATED
- 2 CENTER CONTACT: BERYLLIUM COPPER, GOLD PLATED
- 3 INSULATOR: PTFE

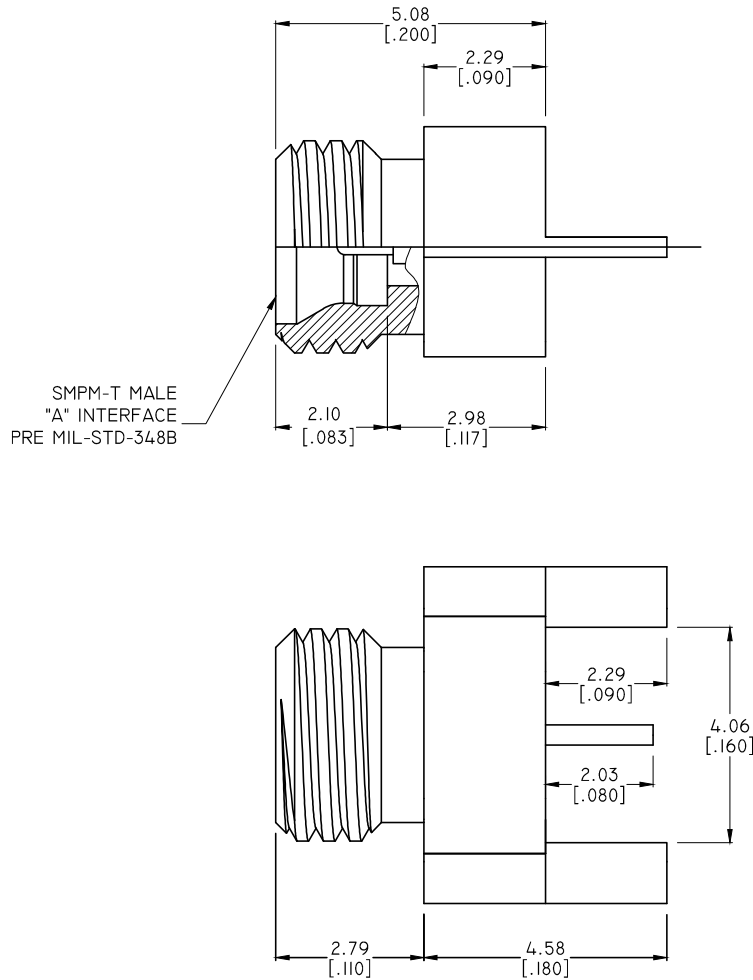
**ELECTRICAL DATA:**

- 1 IMPEDANCE: 50 Ω
- 2 FREQUENCY RANGE: DC~40 GHZ

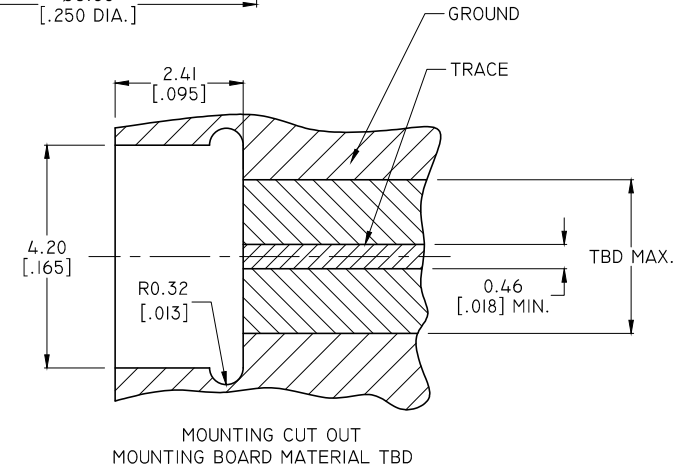
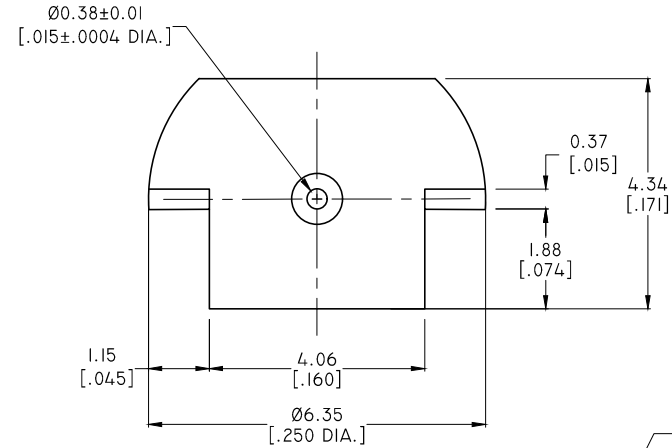
**ENVIRONMENTAL DATA:**

- 1 TEMPERATURE RANGE: -55°C~+125°C

REVISIONS			
REV.	DESCRIPTION	DATE	APPROVED
A	INITIAL RELEASE	02/20/19	J. QU



SMPM-T MALE  
"A" INTERFACE  
PRE MIL-STD-348B



PART NO.	"A" INTERFACE
ANO 9411-5030-1	FULL DETENT
ANO 9411-5030-2	SMOOTH BORE

DRAWN	W. YANG	DATE	02/20/19
CHECKED	X. B. YANG	DATE	02/20/19
APPROVED	J. QU	DATE	02/20/19
UNLESS OTHERWISE SPECIFIED DIMENSIONS ARE IN MILLIMETERS. DIMENSIONS IN [ ] ARE IN INCHES FOR CUSTOMER REFERENCE ONLY UNLESS OTHERWISE SPECIFIED TOLERANCE ARE:		THESE DRAWINGS AND SPECIFICATIONS ARE THE PROPERTY OF ANOISON ELECTRONICS LTD AND SHOULD NOT BE USED WITHOUT WRITTEN PERMISSION COPYRIGHT © 2019 ANOISON ELECTRONICS LTD	
.XX	±0.13 [ .005"		
.X	±0.20 [ .008"		
X	±0.50 [ .019"		
.X°	±1°		
X°	±2°		



TITLE			
SMPM-T STRAIGHT MALE, LAUNCHER, (BOARD EDGE MOUNT)			
VIEW		PART NO.	
		ANO 9411-5030	
SIZE	SCALE	SHEET	REV.
A3	10:1	1/1	A

4

3

2

1