

REVISIONS			
REV.	DESCRIPTION	DATE	APPROVED
A	INITIAL RELEASE	07/07/21	J. QU

MATERIAL & FINISH:

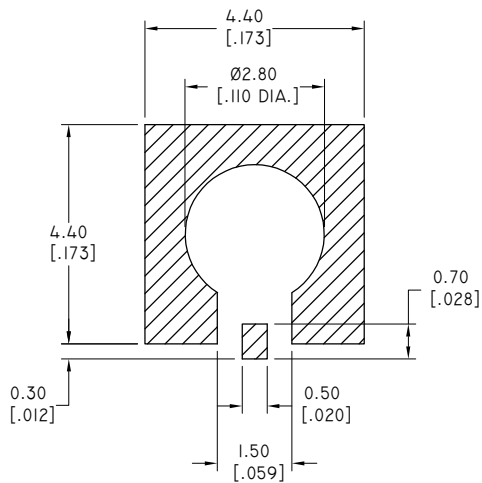
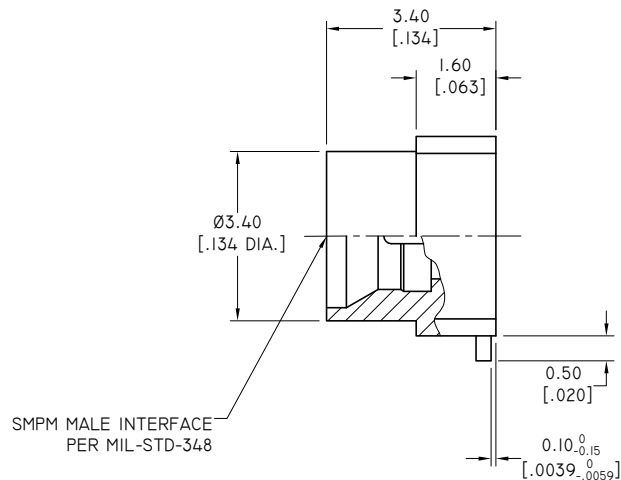
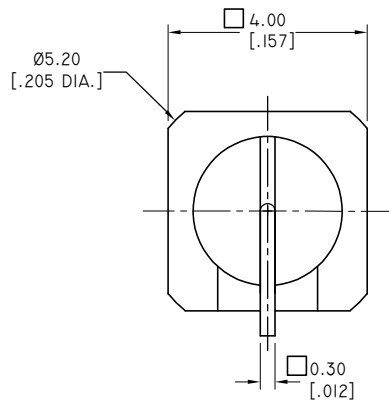
1. BODY: BRASS, GOLD
2. CENTER CONTACT: BRASS, GOLD PLATED
3. INSULATOR: PEEK

ENVIRONMENTAL DATA:

1. TEMPERATURE RANGE: -55°C~+125°C
2. 2011/65/EU (RoHS): COMPLIANT

ELECTRICAL SPECIFICATIONS:

1. IMPEDANCE: 50 Ω
2. FREQUENCY RANGE: DC~65GHz
3. VSWR: 1.12 MAX. AT DC~12GHz
1.22 MAX. AT 12~16GHz
1.92 MAX. AT 16~26GHz



RECOMMENDED PCB LAYOUT

PART NO.	"A" INTERFACE
ANO 9411-4053-1	FULL DETENT
ANO 9411-4053-2	SMOOTH BORE

DRAWN	W. YANG	DATE	07/07/21
CHECKED	L. YANG	DATE	07/07/21
APPROVED	J. QU	DATE	07/07/21
UNLESS OTHERWISE SPECIFIED DIMENSIONS ARE IN MILLIMETERS, DIMENSIONS IN [] ARE IN INCHES FOR CUSTOMER REFERENCE ONLY UNLESS OTHERWISE SPECIFIED TOLERANCE ARE:		THESE DRAWINGS AND SPECIFICATIONS ARE THE PROPERTY OF ANOISON ELECTRONICS LTD AND SHOULD NOT BE USED WITHOUT WRITTEN PERMISSION COPYRIGHT © 2021 ANOISON ELECTRONICS LTD	
.XX	±0.13 [0.005"]		
.X	±0.20 [0.008"]		
X	±0.50 [0.019"]		
X°	±1°		
X"	±2°		



TITLE			
SMPM STRAIGHT PLUG SMT			
VIEW		PART NO.	
		ANO 9411-4053	
SIZE	SCALE	SHEET	REV.
A3	10:1	1/1	A