

4

3

2

1

REVISIONS

REV.	DESCRIPTION	DATE	APPROVED
B	.050 DIA. CHANGED TO .020 DIA.	01/23/14	J. QU
C	DRAWING FORMAT CHANGED	08/10/17	J. QU

MATERIAL & FINISH:

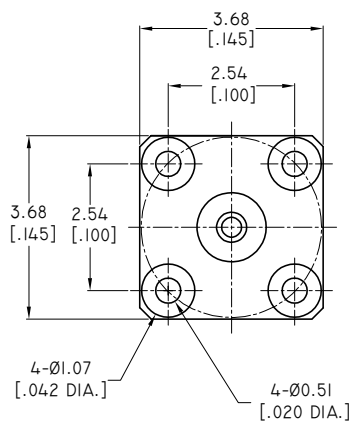
- 1. CENTER CONTACT: BERYLLIUM COPPER ALLOY, GOLD PLATED
- 2. BODY: STAINLESS STEEL, PASSIVATED
- 3. BASE: BERYLLIUM COPPER ALLOY, GOLD PLATED
- 4. INSULATOR: PTFE

ENVIRONMENTAL DATA:

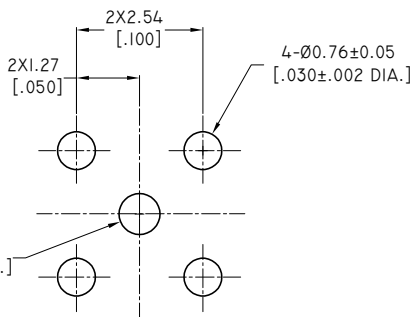
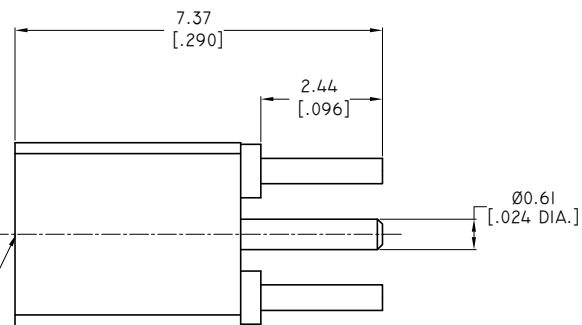
- 1. TEMPERATURE RANGE: -65°C~+165°C
- 2. 2011/65/EU (RoHS): COMPLIANT

ELECTRICAL SPECIFICATIONS:

- 1. IMPEDANCE: 50 Ω
- 2. FREQUENCY RANGE: DC~26.5GHZ
- 3. VSWR: 1.35 TYPICAL



SMPM MALE  
"A" INTERFACE  
PRE MIL-STD-348B



Ø0.83±0.04  
[.0325±.0015 DIA.]

RECOMMENDED MTG. HOLE PATTERN

PART NO.	"A" INTERFACE
ANO 9411-4003-1	FULL DETENT
ANO 9411-4003-2	SMOOTH BORE

DRAWN	P. CHEN	DATE	08/10/17
CHECKED	L. YANG	DATE	08/10/17
APPROVED	J. QU	DATE	08/10/17
UNLESS OTHERWISE SPECIFIED DIMENSIONS ARE IN MILLIMETERS, DIMENSIONS IN [ ] ARE IN INCHES FOR CUSTOMER REFERENCE ONLY UNLESS OTHERWISE SPECIFIED TOLERANCE ARE:		THESE DRAWINGS AND SPECIFICATIONS ARE THE PROPERTY OF ANOISON ELECTRONICS LTD AND SHOULD NOT BE USED WITHOUT WRITTEN PERMISSION COPYRIGHT © 2017 ANOISON ELECTRONICS LTD	
.XX	±0.13 [.005"]		
.X	±0.20 [.008"]		
X	±0.50 [.019"]		
X°	±1°		
X*	±2°		



TITLE  
SMPM STRAIGHT MALE FOR PCB MOUNT

VIEW	PART NO. ANO 9411-4003		
	SIZE A3	SCALE 10:1	SHEET 1/1
		REV. C	

4

3

2

1