

REVISIONS			
REV.	DESCRIPTION	DATE	APPROVED
A	INITIAL RELEASE	08/17/22	J. Q

MATERIAL & FINISH:

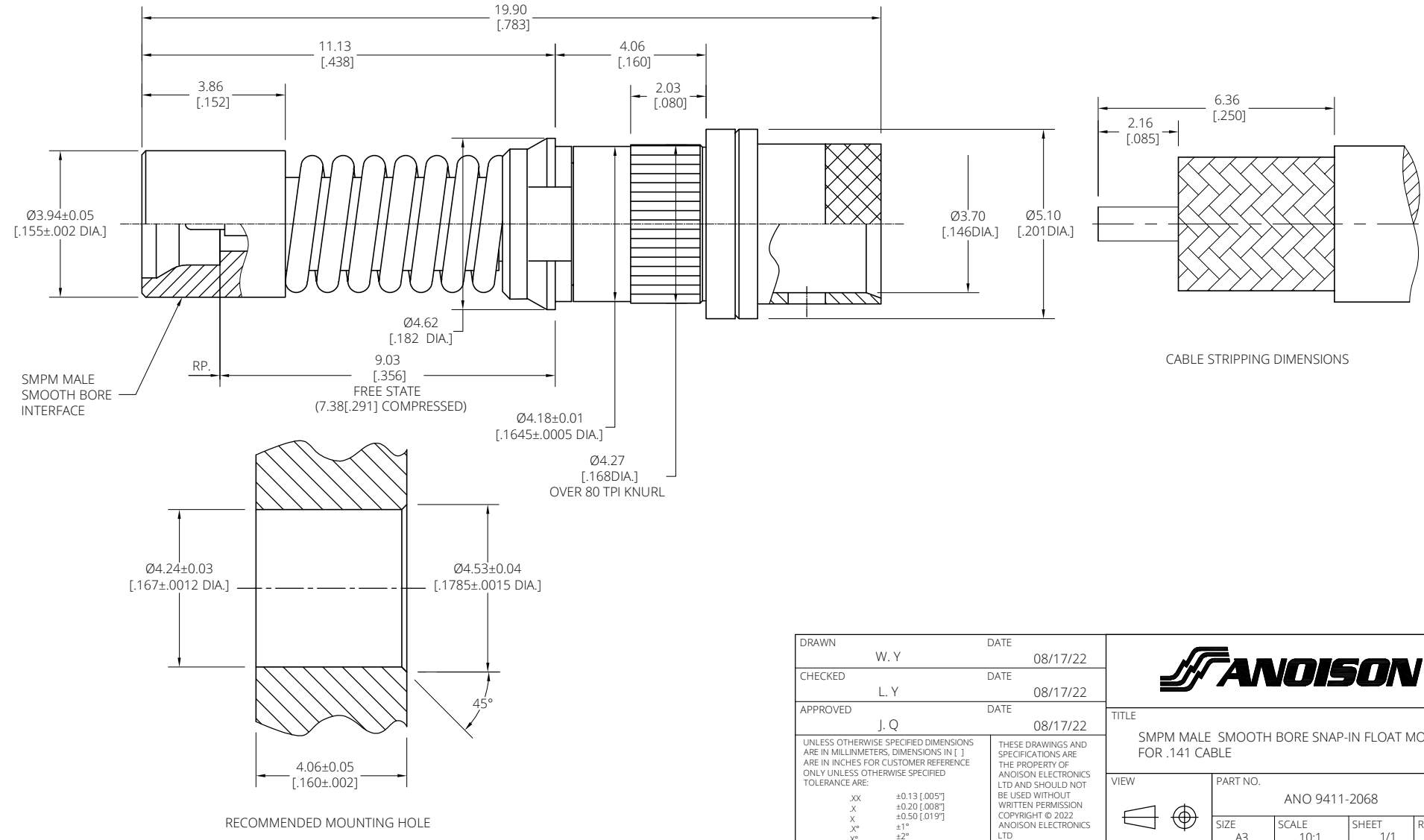
- HOUSING AND SHROUD: STAINLESS STEEL PER AMS-5640, PASSIVATED PER AMS-2700
- WASHER: STAINLESS STEEL PER AMS-5640, PASSIVATED PASSIVATED PER AMS-270
- CENTER CONTACT: BERYLLIUM COPPER ALLOY PER ASTM B196, GOLD PER ASTM B488, TYPE II, CODE C, CLASS 1.27, OVER NICKEL PER AMS-QQ-N-290, CLASS 1, .00005" MIN.
- LOCK RING HOUSING: BERYLLIUM COPPER ALLOY PER ASTM B196, NICKEL PER AMS-QQ-N-290, CLASS 1, GRADE G
- CABLE ADAPTER: BERYLLIUM COPPER ALLOY PER ASTM B196, GOLD PER ASTM B488, TYPE II, CODE C, CLASS 1.27, OVER NICKEL PER AMS-QQ-N-290, CLASS 1, .00005" MIN.
- INSULATOR: PTFE PER ASTM D1710, TYPE I GRADE 1, CLASS B
- SPRING: STAINLESS STEEL PER AMS-5640, PASSIVATED PASSIVATED PER AMS-270

ELECTRICAL DATA:

- IMPEDANCE: 50 Ω
- FREQUENCY RANGE: DC~50 GHz
- VSWR: 1.40 MAX. @ DC~26.5GHz

ENVIRONMENTAL DATA:

- TEMPERATURE RANGE: -55°C~+165°C
- 2011/65/EU(RoHS) AND 2015/863/(RoHS): COMPLIANT
- 1999/45/EC(REACH): COMPLIANT



DRAWN	W. Y	DATE	08/17/22
CHECKED	L. Y	DATE	08/17/22
APPROVED	J. Q	DATE	08/17/22
UNLESS OTHERWISE SPECIFIED DIMENSIONS ARE IN MILLIMETERS, DIMENSIONS IN [] ARE IN INCHES FOR CUSTOMER REFERENCE ONLY UNLESS OTHERWISE SPECIFIED TOLERANCE ARE:		THESE DRAWINGS AND SPECIFICATIONS ARE THE PROPERTY OF ANOISON ELECTRONICS LTD AND SHOULD NOT BE USED WITHOUT WRITTEN PERMISSION COPYRIGHT © 2022 ANOISON ELECTRONICS LTD	
XX	±0.13 [005"]		
X	±0.20 [008"]		
x	±0.50 [019"]		
x*	±1"		
x**	±2"		

ANOISON

TITLE
SMMP MALE SMOOTH BORE SNAP-IN FLOAT MOUNT FOR .141 CABLE

VIEW

PART NO.
ANO 9411-2068

SIZE	SCALE	SHEET	REV.
A3	10:1	1/1	A